

5th Annual

# Great Northern

*Bull & Female Sale*

NORTHERN GENETICS FACILITY | CLEAR LAKE, MN | MARCH 22, 2024 | 1PM



27 Charolais Bulls  
24 Simmental & SimAngus Bulls  
14 Female Lots



# 5th Annual **Great Northern** *Bull & Female Sale*



## ***Welcome to the fifth annual Great Northern Bull & Female Sale!***

What a blessing this mild winter has been! We hope everyone's calving seasons are going smoothly and you are benefiting from the nice temperatures and lack of snow. We are pleased to once again bring you a strong set of bulls and females to help you reach your breeding goals. Throughout the catalog you will see cattle that represent the best of our herds. We strive to not breed for just one specific trait but to raise cattle that excel in many areas.

As always, the bulls on this sale have been genomically tested and have carcass scan data. They've all been semen tested and are ready to go to work for you. We want to provide as much data as possible so you are able to make the best selection for your herd. Some of the genomic data was not yet available at the time of catalog printing. A supplement sheet will be available sale day with the updated genomics. All the bulls were developed together at Northern Genetics on a balanced ration developed by our ADM representative.

Please note that the sale will be broadcast on DVAuction this year. If you can't make it to the sale, please feel free to reach out to us with questions. We stand behind our cattle, and you can feel confident in your bids even if you are unable to join us in person on sale day. All the cattle will be videoed and the videos will be posted in advance. Internet and phone bidding will be available again this year.

This sale wouldn't be possible without our guest consignors. We'd like to extend a special thank you to North Grove Charolais, Double-H Charolais, and Pearson Cattle for joining us for this sale. We would also like to give special recognition to Harlin and Sue Hecht who are retiring after this year's sale. It has been a blessing to work with them and learn from them over the years. If you have any questions about the cattle, please feel free to contact us, the guest consignors, or our sale management team. We look forward to seeing you on March 22!

***The Moller Family | Heritage Cattle Company***



# Join us on March 22, 2024 at 1PM CST Northern Genetics Facility | Clear Lake, MN

## Auctioneer

Justin Stout (913) 645-5136

## Sale Representatives

Kelly Schmidt (406) 599-2395

Kip Julson (605) 351-9088

Jim Dressen (507) 430-9581

Hadley Schotte, AICA (785) 562-6632

Eric Lee, Stockyard Media (608) 295-5312

Andrew Swanson, Farm & Ranch Guide (507) 829-4133

## Insurance

Colton Tobin, Martin-Trudeau Insurance (605) 933-9501

## Day of Sale Phone Numbers

Scott Moller, Heritage Cattle Company (612) 272-2913

Dustin Fischer, North Grove Charolais (612) 716-7401

Dennis Fischer, North Grove Charolais (612) 716-7396

Brandon Fischer, North Grove Charolais (320) 224-9334

Harlin Hecht, Double-H Charolais (320) 760-0359

Matt Pearson, Pearson Cattle (641) 832-0232

## EPDs

All EPDs listed are the most current at the time of printing. Please note that EPDs may change from the time the sale catalog is printed until registration papers are transferred.

## All bulls will be semen checked and have ultrasound data.

All weights are adjusted for yearling and weaning weights.

## Delivery

Free delivery to a central point in MN, SD, ND, WI, and IA. We will assist with arrangements for delivery to states outside of those listed above. \$50 discount per lot if picked up sale day.

## Thank you Glenn, Luke, Isaak & Mason!

We'd like to extend a special thank you to Glenn Stowe, Luke Foesch, Isaak Foesch, and Mason Rasset for their hard work caring for the cattle housed at the Northern Genetics facility. We appreciate all they do!



**New addition Lainey & big sister Paisley!**

## Schedule of Events

### Friday, March 22

8 a.m. to 1 p.m. Cattle on display  
11:30 a.m. Complimentary lunch served  
1:00 p.m. 5th Annual Great Northern Sale

## Directions to Northern Genetics Facility

From St. Cloud: Hwy 10 East to Sherburne County 16, East for 7.5 miles, Northern Genetics is on the left.

## Hotel Accommodations

GrandStay Hotel & Suites - Becker, MN (10 miles)  
(763) 262-7700 or (855) 455-7829

## Announcements

Announcements made sale day and from the auction block during the sale take precedence over printed materials associated with the sale. Anyone attending the sale attends at his or her own risk. Heritage Cattle Company, guest consignors, and the sales force will not be held responsible for any personal injury for attending this sale.

## Sale Videos and Online Bidding

The sale offering will be broadcast on TV screens for the auction. The cattle will be available for viewing prior to the sale. Videos will be available before the sale at DVAuction. For online bidding, visit DVAuction for more information.

**DVAuction**  
Broadcasting Real-Time Auctions

If you have any questions regarding DVAuction please contact them at (402) 316-5460.

## Terms, Conditions, and Bull Guarantee

Unless otherwise noted, all the breeding age bulls will have passed a breeding soundness exam prior to pick up/delivery. In addition to the standard terms and conditions of the American Simmental Association and the American International Charolais Association, we will provide the first breeding season (the 90-day period immediately following turn out) guarantee on all yearling and older bulls. This guarantee is not an insurance or mortality policy but a guarantee on functional fertility. It is not a substitute or replacement for poor management. Buyer assumes all risks for injury due to running bulls together or management decisions outside genetic control. For the guarantee to apply, we ask that you contact us as soon as a condition is observed and before the animal is sold. We will work with you to determine whether the animal is returned or sold for slaughter. We will attempt to provide a suitable replacement. If one cannot be provided of equal or greater value, we will issue a sale credit to be used in a future sale for the full purchase price less the salvage value of the animal.



# M6 New Germaine 599 P ET



CE	15.0	15%
BW	-0.7	55%
WW	65	25%
YW	126	10%
MILK	32	10%
MTL	64	9%
SC	2.0	1%
TSI	275.71	4%
CW	30	15%
REA	0.97	4%
FAT	0.001	35%
MARB	0.29	4%

## Past Progeny of Germaine



NGC Capitalist 118J ET  
2022 Great Northern Bull Sale High Seller

## Lot 1 NGC Honor 306L ET

CE	16.0	10%	
BW	-2.5	25%	
WW	65	40%	
YW	133	15%	
MILK	23	65%	
MTL	55	55%	
SC	1.8	2%	
TSI	278.87	9%	
CW	29	30%	
REA	0.78	30%	
FAT	0.023	70%	
MARB	0.09	70%	
BW	WW	YW	ADG
88	741	1303	3.51
PAF			

January 6, 2023 Polled EM992250

M898189 LT Authority 7229 PLD

M927067 LT Badge 9184 PLD

F1225399 LT Madalynn 6108 PLD

EM756753 M6 New Standard 842 P ET

EF1220823 M6 New Germaine 599 P ET

EF1149859 M6 Cool Germaine 1145 P ET

Lot 1 is a very complete, stylish LT Badge son who is a maternal brother to NGC Capitalist and NGC Loadmaster. Honor is a good spread bull from CE to YW. He has an incredible amount of length, top and muscle that ties together in a smooth shoulder and attractive, small head. He also has a solid EPD profile.



Lot 1



## Lot 2 HCC Excellence 320L ET



Lot 2

CE	12.7	35%	February 2, 2023	Polled	EM992757
BW	-0.8	55%	M898189 LT Authority 7229 PLD		
WW	68	25%	<b>M927067 LT Badge 9184 PLD</b>		
YW	125	25%	F1225399 LT Madalynn 6108 PLD		
MILK	27	30%	EM756753 M6 New Standard 842 P ET		
MTL	61	25%	<b>EF1220823 M6 New Germaine 599 P ET</b>		
SC	1.8	2%	EF1149859 M6 Cool Germaine 1145 P ET		
TSI	266.66	25%	<p>Here's a powerfully built, athletic M6 New Germaine 599 son. If you're looking to add muscle and look in a set of feeder calves, consider Excellence a good choice. He is a very balanced bull on his EPD chart. We enjoy the vigor of the LT Badge progeny.</p>		
CW	29	30%			
REA	0.82	25%			
FAT	0.019	60%			
MARB	0.12	55%			
BW	WW	YW	ADG		
95	610	1290	4.25		
PAC					



## Lot 3 HCC Blade 267K ET

CE	13.0	35%	September 20, 2022	Polled	EM992980
BW	-0.6	60%	M760665 LT Rushmore 8060 PLD		
WW	70	20%	M943428 RBM Keystone H41		
YW	126	20%	F1260468 RBM Jasmine F251		
MILK	30	20%	EM756753 M6 New Standard 842 P ET		
MTL	65	15%	EF1220823 M6 New Germaine 599 P ET		
SC	1.7	3%	EF1149859 M6 Cool Germaine 1145 P ET		
TSI	271.30	20%	<p>Blade is an extremely powerful, big-bodied fall bull who will go out and service a lot of cows. RBM Keystone H41 is a son of LT Rushmore who is gaining momentum with breeders across the country. Great pedigree, EPDs and solid performance in this bull that will take your herd to the next step.</p>		
CW	31	25%			
REA	0.88	20%			
FAT	0.037	90%			
MARB	0.35	3%			
BW	WW	YW	ADG		
97	723	1262	3.37		
PAF					



Lot 3

## Lot 4 NGC Nitro 308L ET



Lot 4

CE	13.0	35%	January 8, 2023	Polled	EM992260
BW	-1.9	35%	M760665 LT Rushmore 8060 PLD		
WW	58	65%	<b>M943428 RBM Keystone H41</b>		
YW	109	60%	F1260468 RBM Jasmine F251		
MILK	32	9%	EM756753 M6 New Standard 842 P ET		
MTL	61	25%	<b>EF1220823 M6 New Germaine 599 P ET</b>		
SC	2.1	1%	EF1149859 M6 Cool Germaine 1145 P ET		
TSI	259.42	40%	If you're looking to add marbling and power to a set of feeder calves, take a look here at this bull's top 3% Marb EPD. Nitro was a powerhouse at weaning with a 782 pound WW, and he kept going to a 1376 pound YW. He's big, stout and full of red meat.		
CW	24	50%			
REA	0.83	25%			
FAT	0.028	80%			
MARB	0.35	3%			
BW	WW	YW	ADG		
96	782	1376	3.71		
PAF					





## Lot 5 NGC Turnkey 315L ET

CE	12.2	40%	January 12, 2023	Polled	EM992257
BW	0.6	85%	M760665 LT Rushmore 8060 PLD		
WW	66	35%	M943428 RBM Keystone H41		
YW	117	40%	F1260468 RBM Jasmine F251		
MILK	23	60%	EM756753 M6 New Standard 842 P ET		
MTL	56	45%	EF1220823 M6 New Germaine 599 P ET		
SC	2.0	1%	EF1149859 M6 Cool Germaine 1145 P ET		
TSI	258.51	45%	Turnkey is attractive, square and has that herd bull look. He's a balanced bull who is strong topped with a big center body and large scrotal. In addition, he is in the top 35% WW, 40% YW and 10% Marb. Turnkey is a direct son of M6 New Germaine 599 and lots 6-11 are Germaine 599 grandsons.		
CW	25	50%			
REA	0.56	80%			
FAT	0.032	85%			
MARB	0.26	10%			
BW	WW	YW	ADG		
95	799	1329	3.31		
PAF					



Lot 5

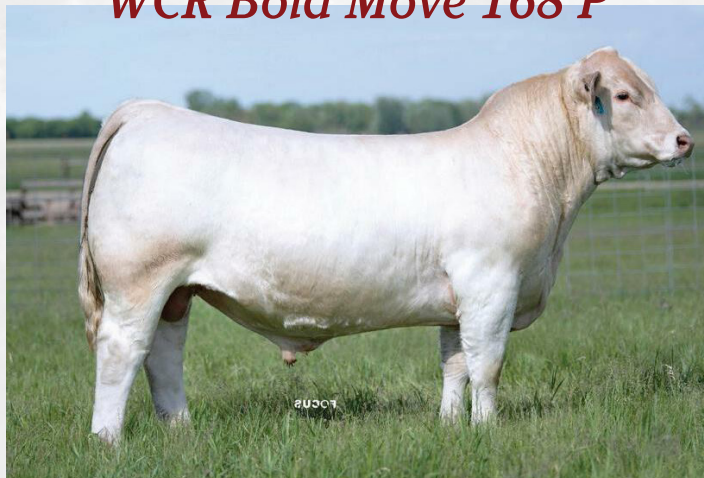
## NGC Gaiana 930G ET



CE	15.0	15%
BW	-1.2	45%
WW	64	30%
YW	135	4%
MILK	33	8%
MTL	65	8%
SC	1.8	2%
TSI	282.76	2%
CW	39	2%
REA	0.90	8%
FAT	0.031	90%
MARB	0.19	20%

We are big fans of M6 New Germaine 599, and what she has done for our operations has been exciting. A true donor is a donor who has offspring who are as good as her or better than her. Germaine 599 passes her outstanding traits to her calves, and she certainly has done that with NGC Gaiana 930G ET. We think quite highly of this young RBM Fargo Y111 daughter. Gaiana is structurally sound, good uddered, massive in her body with a level, big top, and has a striking look while being functional and fertile. She has a stellar EPD chart: top 2% CW and SC, 4% YW, 8% Milk, MTL and REA, 15% CE, 20% Marb., 30% WW and top 2% TSI at 282.76. We are very excited about her progeny in this sale. They sell as lots 6, 7 and 56. PAF | Owned with Kelly Callahan

## WCR Bold Move 168 P



Reference Sire for Lots 6 & 7



## Lot 6 NGC Boldness 334L ET



CE	13.5	30%	February 10, 2023	Polled	EM992248
BW	-0.8	55%	M930171 WC Platinum 8558 P		
WW	83	3%	M959157 WCR Bold Move 168 P		
YW	166	1%	F1278406 WCR Ms Remix 9250 P		
MILK	27	35%	EM809088 RBM Fargo Y111		
MTL	69	6%	EF1293706 NGC Gaiana 930G ET		
SC	2.0	1%	EF1220823 M6 New Germaine 599 P ET		
TSI	310.54	1%	<p>Here is a powerhouse herd sire prospect who we think gives a tremendous amount of breeding flexibility. We enjoy every angle of this bull from his massive center body, length, muscle pattern and large scrotal, and he is still able to get out and move. Boldness reads incredible on paper: top 1% YW and SC, 3% WW and CW, 6% MTL and REA, 15% MCE and Marb., 30% CE, 35% Milk and a TSI number that is top 1% at 310.54. <b>Retaining 1/3 semen interest</b></p>		
CW	44	3%			
REA	0.98	6%			
FAT	0.049	100%			
MARB	0.25	15%			
BW	WW	YW	ADG		
94	782	1398	3.85		
PAF					

## Lot 7 NGC Move Over 350L ET

CE	12.2	40%	March 16, 2023	Polled	EM992249
BW	0.4	80%	M930171 WC Platinum 8558 P		
WW	76	8%	<b>M959157 WCR Bold Move 168 P</b>		
YW	152	2%	F1278406 WCR Ms Remix 9250 P		
MILK	31	15%	EM809088 RBM Fargo Y111		
MTL	69	5%	<b>EF1293706 NGC Gaiana 930G ET</b>		
SC	1.8	2%	EF1220823 M6 New Germaine 599 P ET		
TSI	295.65	2%	We really like the WCR Bold Move 168 P calves. They stand out, and they grow. Move Over has a presence about him, and he really performed with a 760 pound WW to a 1406 pound YW. He had a 4.04 ADG from WW to YW. His EPD profile shows that as he is top 2% YW and SC, 5% MTL, 6% CW, 8% WW, 15% Milk and REA, 20% MCE, 30% Marb. and top 2% TSI at 295.65.		
CW	41	6%			
REA	0.91	15%			
FAT	0.018	60%			
MARB	0.18	30%			
BW	WW	YW	ADG		
90	760	1406	4.04		
PAF					



## Lot 8 HCC Emperor 340L



CE	15.3	15%	February 16, 2023	Polled	M992762
BW	-1.8	40%	M866811 LT Citation 5228 PLD		
WW	79	5%	EM964793 NGC Capitalist 118J ET		
YW	136	8%	EF1220823 M6 New Germaine 599 P ET		
MILK	29	25%	M852822 LT Patriot 4004 PLD		
MTL	68	6%	F1242387 HCC Goldie's Keepsake 05E		
SC	1.7	3%	F1183936 WEC Goldie		
TSI	279.33	8%	<p>This is the first set of NGC Capitalist 118J ET sons to sell in the USA, and we couldn't be happier with what we are seeing in his progeny. Modest BW in this bull, and he also has a super balanced look. Emperor is ultra-complete with a big top, small head, and he stands right at the ground. He's a good spread bull who is in the top 15% CE to 8% YW.</p>		
CW	31	25%			
REA	0.88	15%			
FAT	0.015	55%			
MARB	0.27	9%			
BW	WW	YW	ADG		
78	736	1251	3.23		
PAC					



## Lot 9 NGC Defend 339L

CE	15.4	15%	February 19, 2023	Polled	M992179
BW	-2.4	30%	M880381 LT Affinity 6221 PLD		
WW	69	25%	<b>M964794 NGC Defender 135J</b>		
YW	126	20%	EF1200988 NGC Ms Nancy 418B ET		
MILK	24	50%	M866811 LT Citation 5228 PLD		
MTL	59	35%	<b>EF1323509 NGC Jewel 125J ET</b>		
SC	2.0	1%	EF1220823 M6 New Germaine 599 P ET		
TSI	275.41	15%	<p>Lot 9 is out of a beautiful first calf heifer who is a full sib to NGC Capitalist. Defend is very correct in his confirmation. He has a small head and is long bodied, massive topped and very heavy muscled. You'll like how he reads on paper: top 2% Marb., 15% CE, 20% YW and REA, 25% WW and 15% TSI. Solid pedigree with Citation, New Standard, Affinity, Nancy 6100 and Ledger makes this bull a sure bet.</p>		
CW	21	65%			
REA	0.86	20%			
FAT	0.036	90%			
MARB	0.38	2%			
BW	WW	YW	ADG		
91	734	1296	3.51		
PAF					



Lot 9

## Lot 10 NGC Battle 319L

CE	12.4	40%	January 15, 2023	Polled	M993058
BW	-0.1	70%	M898189 LT Authority 7229 PLD		
WW	76	8%	<b>M927067 LT Badge 9184 PLD</b>		
YW	140	6%	F1225399 LT Madalynn 6108 PLD		
MILK	26	40%	M866811 LT Citation 5228 PLD		
MTL	64	15%	<b>EF1318425 NGC Sapphire 120J ET</b>		
SC	2.1	1%	EF1220823 M6 New Germaine 599 P ET		
TSI	282.18	6%	<p>Battle is top 6% TSI and YW as well as 8% WW, and his carcass traits are in the top 15% Marb. and 20% CW. He is as stout as you will find and is out of a Citation first calf heifer who has a great udder. We really like how consistent the Badge calves are, and we think Battle will sire a very uniform set of calves.</p>		
CW	34	20%			
REA	0.78	30%			
FAT	0.013	50%			
MARB	0.25	15%			
BW	WW	YW	ADG		
88	726	1372	4.04		
PAC					



Lot 10

## Lot 11 NGC Iron Man 321L

CE	8.6	75%	January 16, 2023	Polled	M993378
BW	1.0	90%	EM633377 M6 Grid Maker 104 PET		
WW	70	20%	<b>EM889225 SAT Gridmaker 6306 P ET</b>		
YW	130	15%	F1153885 RLL Eatons Miss Ledger 20533 P		
MILK	25	45%	M898189 LT Authority 7229 PLD		
MTL	60	30%	<b>EF1298610 NGC Gwen 940G ET</b>		
SC	1.2	30%	EF1220823 M6 New Germaine 599 P ET		
TSI	275.11	15%	<p>If you are looking for length, mass of body and a fault-free kind of bull, take a look at lot 11. He has a different pedigree on the top side that brings in the great M6 Gridmaker 104 PET. Iron Man had a 3.82 ADG and stands square and correct on his feet and legs. He's a big growth bull who is in the top 15% YW and 20% WW and will be a carcass improver, ranking in the top 5% REA and 15% Marb.</p>		
CW	27	40%			
REA	1.00	5%			
FAT	0.004	30%			
MARB	0.24	15%			
BW	WW	YW	ADG		
98	769	1380	3.82		
PAF					



Lot 11



# M&M Ms. New Standard 3517 PLD ET



CE	13.6	25%
BW	-2.6	20%
WW	72	8%
YW	121	15%
MILK	29	20%
MTL	65	8%
SC	2.0	1%
TSI	264.54	15%
CW	42	2%
REA	0.96	5%
FAT	-0.008	20%
MARB	0.20	20%

## Past Progeny of New Standard



NGC Dutton 942G ET  
2021 Great Northern Bull Sale High Seller

## Lot 12 HCC Royalty 276K ET



Lot 12

CE	14.7	20%	October 11, 2022	Polled	EM992756
BW	-1.9	35%	M857974 BHD Perseus B65 P		
WW	70	25%	M905524 DC/CRJ Tank E108 P		
YW	135	9%	F1208980 CRJ MS Zylan C1587		
MILK	33	6%	EM756753 M6 New Standard 842 P ET		
MTL	68	6%	EF1185544 M&M Ms New Standard 3517 PLDET		
SC	1.3	20%	EF1117989 M&M Ms Stealth 9509 PLD ET		
TSI	281.18	7%	<p>The next three lots are very consistent, high-quality full brothers. One of the most consistent flushes we have ever made is DC/CRJ Tank E108 P x M&amp;M Ms New Standard 3517 PLD ET. Royalty is a powerful long yearling who reads solid green on paper. He started off with a 77 pound BW and has an ADG of 3.72. Royalty is big, strong and will certainly be a standout by raising elite offspring that will be very marketable.</p>		
CW	47	2%			
REA	0.86	20%			
FAT	-0.016	5%			
MARB	0.18	30%			
BW	WW	YW	ADG		
77	691	1286	3.72		
PAF					





## Lot 13 NGC Armour 307L ET

CE	14.9	20%	January 7, 2023	Polled	EM992712
BW	-2.4	30%	M857974 BHD Perseus B65 P		
WW	81	4%	<b>M905524 DC/CRJ Tank E108 P</b>		
YW	150	2%	F1208980 CRJ MS Zylan C1587		
MILK	42	1%	EM756753 M6 New Standard 842 P ET		
MTL	83	1%	<b>EF1185544 M&amp;M Ms New Standard 3517 PLDET</b>		
SC	1.7	3%	EF1117989 M&M Ms Stealth 9509 PLD ET		
TSI	292.27	2%			
CW	56	1%			
REA	0.89	15%			
FAT	-0.014	6%			
MARB	0.13	55%			
BW	WW	YW	ADG		
88	764	1442	4.24		
PAF					

Here's a full brother to NGC Dutton 942G ET who was out working for the newly dispersed Honeyman Charolais. Ryan Honeyman said in all of his 35 years he has not come across a bull like Dutton. The calves come much smaller than average at birth and are much larger than average at WW and YW. That is what these Tank by Ms New Standard offspring do: they grow. Armour is a high-growth bull who is put together very well. Look at his EPDs, his 1442 pound YW and his 4.24 ADG. Bid with confidence. Retaining 1/3 semen interest



Lot 13

## Lot 14 NGC Combat 317L ET

CE	18.9	2%	January 12, 2023	Polled	EM993789
BW	-5.1	5%	M857974 BHD Perseus B65 P		
WW	77	7%	<b>M905524 DC/CRJ Tank E108 P</b>		
YW	152	2%	F1208980 CRJ MS Zylan C1587		
MILK	39	1%	EM756753 M6 New Standard 842 P ET		
MTL	78	1%	<b>EF1185544 M&amp;M Ms New Standard 3517 PLDET</b>		
SC	1.5	8%	EF1117989 M&M Ms Stealth 9509 PLD ET		
TSI	302.83	1%			
CW	53	1%			
REA	0.98	6%			
FAT	-0.038	1%			
MARB	0.20	25%			
BW	WW	YW	ADG		
84	724	1418	4.34		
PAF					

Genomics really liked this bull. Look at this spread: top 2% CE to 2% YW. Talk about a massive spread bull that reads true calving to growth. He did this in his actual 84 pound BW to a 1418 pound YW, with a big ADG of 4.34. Combat is an explosive herd sire prospect with power, top and look with a small striking head. His unmatched EPD profile and actual performance makes him unique. Top 1% CW, Fat, Milk and MTL, 2% YW, 4% MCE, 5% BW, 6% REA, 7% WW, 8% SC, and 25% Marb. Homo Polled. Retaining 1/3 semen interest



Lot 15

## Lot 15 NGC Jukebox 311L ET

CE	12.7	35%	January 9, 2023	Polled	EM992259
BW	-2.5	25%	M896459 EC Cracker Jack 234 PLD		
WW	88	1%	<b>M942431 KC Jack 0891P</b>		
YW	152	2%	F1260255 KC Ms Profit Maker 8491P		
MILK	36	2%	EM756753 M6 New Standard 842 P ET		
MTL	80	1%	<b>EF1185544 M&amp;M Ms New Standard 3517 PLDET</b>		
SC	2.1	1%	EF1117989 M&M Ms Stealth 9509 PLD ET		
TSI	293.04	2%			
CW	49	1%			
REA	0.93	9%			
FAT	0.003	30%			
MARB	0.25	15%			
BW	WW	YW	ADG		
90	706	1332	3.91		
PAC					

The Jack 0891 calves were very well received last year with their extra stretch and power. This bull is very long, correct and square. He stems from a high production pedigree. Jukebox is tremendous in his EPD profile. It puts him in the top 1% WW, SC, MTL and CW, 2% YW and Milk, 9% REA, 15% Marb. and top 2% TSI at 293.04. He will add performance and stretch to a set of feeder calves.



## Lot 16 NGC Full Deck 325L ET



Lot 16

CE	6.0	90%	January 23, 2023	Polled	EM992711
BW	1.3	90%	M896459 EC Cracker Jack 234 PLD		
WW	78	6%	<b>M942431 KC Jack 0891P</b>		
YW	143	4%	F1260255 KC Ms Profit Maker 8491P		
MILK	42	1%	EM756753 M6 New Standard 842 P ET		
MTL	81	1%	<b>EF1185544 M&amp;M Ms New Standard 3517 PLDET</b>		
SC	1.8	2%	EF1117989 M&M Ms Stealth 9509 PLD ET		
TSI	285.74	4%	<p>This striking, long-sided, big, stout, heavy muscled son of the genetic powerhouse M&amp;M Ms New Standard 3517 is unique. Full Deck is correct footed and had a 1357 pound YW with a 3.87 ADG. If you're looking for a bull who has power and will produce daughters who milk, this is a good option. Our first Jack 0891 heifers have calved this spring, and they have amazing udders. Look at Full Deck's carcass and growth numbers: top 2% CW and SC, 4% YW and REA, 6% WW, 8% Marb. and a TSI of 285.74. Retaining 1/3 semen interest</p>		
CW	47	2%			
REA	1.02	4%			
FAT	0.004	30%			
MARB	0.27	8%			
BW	WW	YW	ADG		
96	738	1357	3.87		
PAF					

## Lot 17 HCC Brighton 272K

CE	10.3	60%	October 9, 2022	Polled	M992786
BW	-0.3	70%	M866811 LT Citation 5228 PLD		
WW	61	55%	<b>M948838 HCC NGC Momentum 56G</b>		
YW	114	45%	EF118554 M&M Ms New Standard 3517 PLDET		
MILK	28	30%	M814791 Sparrows Sanchez 715T		
MTL	58	40%	<b>EF1197902 NC Starfire 412 P ET</b>		
SC	1.9	2%	EF1087025 PZC Firefly 837P ET		
TSI	259.00	40%	<p>Lot 17 is a big masculine fall bull who has as much muscle as anything in the sale. If you're looking for a little extra age and a bull who will go out and breed a lot of cows, check him out sale day. Brighton is a very balanced grandson of LT Citation; he is a high accuracy sire from CE to growth to carcass.</p>		
CW	23	60%			
REA	0.69	55%			
FAT	-0.004	20%			
MARB	0.17	35%			
BW	WW	YW	ADG		
93	593	1167	3.59		
PAF					



Lot 17

## Lot 18 NGC Cornerstone 259K



Lot 18

CE	11.6	45%	October 3, 2022	Polled	M992713
BW	-1.7	40%	M760665 LT Rushmore 8060 PLD		
WW	58	65%	<b>M943428 RBM Keystone H41</b>		
YW	105	65%	F1260468 RBM Jasmine F251		
MILK	35	4%	M852822 LT Patriot 4004 PLD		
MTL	64	15%	<b>EF1284801 NGC Fallyn 836F ET</b>		
SC	1.6	5%	EF1185544 M&M Ms New Standard 3517 PLDET		
TSI	248.15	70%	<p>Here's an extremely long, free-moving fall bull who has a very high accuracy pedigree. Cornerstone is a big footed and very attractive bull who will go out and be a standout in the pasture. He's in the top 20% for Marb. and the top 4% of the breed for Milk. He will add length, style and pounds to a set of feeder calves.</p>		
CW	21	65%			
REA	0.59	75%			
FAT	0.058	100%			
MARB	0.22	20%			
BW	WW	YW	ADG		
92	709	1280	3.57		
PAF					



## Lot 19 NGC Rip 320L

CE	9.1	70%	January 15, 2023	Polled	M992176
BW	-0.1	70%	M905524 DC/CRJ Tank E108 P		
WW	62	55%	<b>EM946176 NGC Yellowstone 939G</b>		
YW	120	35%	EF1185544 M&M Ms New Standard 3517 PLDET		
MILK	29	25%	M852822 LT Patriot 4004 PLD		
MTL	59	30%	<b>EF1324683 NGC Anna 805F ET</b>		
SC	1.3	20%	EF1061246 M6 Ms 761 Nancy 6100 P ET		
TSI	263.03	35%	<p>We really like the Yellowstone calves; they come easy with shorter gestation, and then they really grow. Rip is super stout, massive in his top and has that masculine look. He's a very balanced bull as he reads top 15% CW, 20% SC and Marb., 25% Milk, 35% YW and TSI at 263.03.</p>		
CW	35	15%			
REA	0.57	80%			
FAT	0.020	65%			
MARB	0.22	20%			
BW	WW	YW	ADG		
92	699	1261	3.51		
PAF					



NGC Yellowstone 939G  
Reference Sire

## NGC Paige 335B ET



CE	12.4	30%
BW	-1.0	45%
WW	53	75%
YW	95	75%
MILK	16	85%
MTL	42	90%
SC	1.4	9%
TSI	239.12	70%
CW	7	95%
REA	0.22	100%
FAT	0.053	100%
MARB	0.30	4%

### Past Progeny of Paige



HCC Goldmine 08F  
2019 Minnesota State Fair | Champion Charolais Bull



NGC Sophie 810F ET & NGC HCC Saige 11H | Sophie's Daughter Sells as Lot 54!  
2020 Charolais Junior Nationals | Reserve Champion Bred & Owned Cow/Calf



## Lot 20 HCC NGC Regal 335L



Lot 20

CE	15.1	15%	February 14, 2023	Polled	M992764
BW	-0.6	60%	M866811 LT Citation 5228 PLD		
WW	74	15%	EM964793 NGC Capitalist 118J ET		
YW	130	15%	EF1220823 M6 New Germaine 599 P ET		
MILK	28	30%	M791626 LT Ledger 0332 P		
MTL	65	15%	EF1200986 NGC Paige 335B ET		
SC	1.9	1%	EF1061246 M6 Ms 761 Nancy 6100 P ET		
TSI	275.11	15%	<p>Regal is a standout Capitalist son who came out of a fantastic Nancy 6100 x Ledger daughter. He has a tremendous amount of thickness throughout his hip and across his top while being big bodied, correct and smooth shouldered. The dam of Regal is a 9-year-old cow with a gorgeous udder; she is built like a 4-year-old and has had great longevity and productivity. Regal reads calving ease to high growth; he's a fault-free kind of bull.</p>		
CW	26	45%			
REA	0.75	40%			
FAT	0.030	80%			
MARB	0.36	3%			
BW	WW	YW	ADG		
85	734	1323	3.70		
PAE					



## Lot 21 NGC Boulder 303L

CE	11.8	45%	January 2, 2023	Polled	M993057
BW	-0.5	65%	M898189 LT Authority 7229 PLD		
WW	79	6%	<b>M927067 LT Badge 9184 PLD</b>		
YW	147	3%	F1225399 LT Madalynn 6108 PLD		
MILK	25	45%	M791626 LT Ledger 0332 P		
MTL	64	15%	<b>EF1245441 NGC Tierney 728E ET</b>		
SC	1.6	5%	EF1061246 M6 Ms 761 Nancy 6100 P ET		
TSI	284.79	5%	Lot 21 is a big, stout, high-growth son of LT Badge. He ranks in the top 3% YW, 6% WW, 7% CW and top 5% TSI at 284.79. Boulder will add pounds, length and muscle to your next set of feeder calves. He's a nice headed, attractive calf that stems from the no miss Nancy 6100 cow family.		
CW	40	7%			
REA	0.83	25%			
FAT	0.034	85%			
MARB	0.08	75%			
BW	WW	YW	ADG		
88	744	1354	3.81		
PAC					



M6 Ms 761 Nancy 6100 P ET  
Reference Grand Dam

## Lot 22 Double-H Raindancer 307L



Lot 22

CE	6.4	90%	March 2, 2023	Polled	M982194
BW	1.0	90%	M852822 LT Patriot 4004 PLD		
WW	66	35%	<b>EM938764 CML Raindance 996G</b>		
YW	131	15%	F1186034 CML PLD Wilma 3S		
MILK	23	55%	M865273 WC Milestone 5223 P		
MTL	57	45%	<b>EF1272372 Double-H Marions Miley 916G ET</b>		
SC	1.1	40%	EF1117783 Double-H TLC Marion 0429 ET		
TSI	272.94	15%	307L is a high growth bull who comes from one of the top sellers on the Double-H Dispersal and is out of the Canadian powerhouse Raindance. Raindance is sired by LT Patriot who needs no introduction. Add in the commercial acceptance of the Milestone part of his pedigree and you have a homerun. He's sure to produce more profit for his new owner. As an added bonus, he's homozygous polled.		
CW	29	30%			
REA	0.83	25%			
FAT	0.006	35%			
MARB	0.08	70%			
BW	WW	YW	ADG		
83	702	1379	4.23		
PAE					





## Lot 23 Double-H Good Stuff 305L

CE	1.2	100%	February 22, 2023	Polled	M982202
BW	3.9	100%	M857813 BHD Kincsem B629		
WW	69	25%	<b>EM921204 DC/BHD King F2503 P</b>		
YW	127	20%	F1164899 BHD Ms Cobalt Z767		
MILK	29	20%	EM908904 BOY Outlier 812 ET PLD		
MTL	64	15%	<b>F1306062 Double-H Right Stuff 105J</b>		
SC	0.8	70%	EF1117783 Double-H TLC Marion 0429 ET		
TSI	265.73	30%	<p>The legendary DeBruycker herd in Montana raised the bull who sired this outstanding performer. He is out of a great two-year-old dam. King's impact has been made from Texas to the Canadian border, and semen sales have been limited, so this is a great opportunity to get in on some top genetics. Look at the 802 pound weaning weight on this homozygous polled future herd sire!</p>		
CW	33	20%			
REA	1.17	1%			
FAT	-0.015	5%			
MARB	0.02	90%			
BW	WW	YW	ADG		
93	802	1453	4.07		
PAF					



Lot 23


## Lot 24 NGC Whistle Blower 301L

CE	12.6	35%	January 1, 2023	Polled	M993056
BW	-2.2	30%	M898189 LT Authority 7229 PLD		
WW	66	35%	<b>M927067 LT Badge 9184 PLD</b>		
YW	106	65%	F1225399 LT Madalynn 6108 PLD		
MILK	29	20%	EM809088 RBM Fargo Y111		
MTL	62	20%	<b>F1298607 NGC Gena 931G</b>		
SC	1.8	2%	EF1239807 NGC Belle 611D ET		
TSI	242.95	80%	<p>Whistle Blower is another solid LT Badge son who is ready to go to work. He has a lot of stretch and length and will sire pounds heavy at weaning time. Modest CE and BW yet he still maintains top 35% WW. His dam's sire is RBM Fargo Y111, and we can't say enough good things about that bull. His offspring really grow. Lot 24 has a different kind of pedigree on the bottom side and will sire a nice set of feeder calves.</p>		
CW	15	85%			
REA	0.71	50%			
FAT	0.008	40%			
MARB	-0.02	95%			
BW	WW	YW	ADG		
86	784	1277	3.08		
PAF					



LT Badge 9184 PLD  
Reference Sire

## Lot 25 Double-H Sizzle 227K

CE	10.0	65%	November 16, 2022	Polled	M974197
BW	0.1	75%	M846631 M&M Outsider 4003 PLD		
WW	69	25%	<b>EM908904 BOY Outlier 812 ET PLD</b>		
YW	116	40%	EF1186561 TR Ms Berkly 4711B ET		
MILK	21	70%	M846721 CCC WC Resource 417 P		
MTL	56	50%	<b>F1273948 WC Sweetheart 8288 P</b>		
SC	1.0	50%	EF1186506 WC CCC Sweetheart 4118 P ET		
TSI	254.35	55%	<p>If you need a bull that can go out and cover cows and maintain his body condition at the same time here is your guy. This deep bodied, easy keeping son of Outlier lost his mother at an early age but he still managed to pull off a 705 pound weaning weight. He is homozygous polled and has great phenotype to go with it. He is also backed by the Sweetheart cow family that is famed in the breed for generations.</p>		
CW	22	60%			
REA	1.03	4%			
FAT	0.015	55%			
MARB	0.02	90%			
BW	WW	YW	ADG		
81	705	1212	3.17		
PAF					



Lot 25



## Lot 26 NGC Jaxx 261K



Lot 26

CE	10.2	60%	October 11, 2022	Polled	M993790
BW	-1.7	40%	M896459 EC Cracker Jack 234 PLD		
WW	74	15%	<b>M942431 KC Jack 0891P</b>		
YW	143	4%	F1260255 KC Ms Profit Maker 8491P		
MILK	42	1%	M829092 M6 Bells & Whistles 258 P		
MTL	79	1%	<b>EF1239808 NGC Brenna 631D ET</b>		
SC	1.2	30%	F1143150 SM Ms Smokester Y150 P		
TSI	292.83	2%	<p>This bull excels in many ways from his appearance, foot, mass, top and how well he balances up with that amount of muscle mass. Jaxx's small attractive head and power on paper is what we like to see. He's top 1% REA, Milk and MTL, 4% YW, 9% Marb., 10% CW, 15% WW and top 2% TSI at 292.83. He will certainly add pounds but yet make them correct and stylish with unmatched carcass traits.</p>		
CW	37	10%			
REA	1.16	1%			
FAT	0.002	30%			
MARB	0.27	9%			
BW	WW	YW	ADG		
90	768	1290	3.26		
PAC					

## Lot 27 Double-H Redeemer 226K ET

CE	7.7	80%	November 8, 2022	Polled	EM974196
BW	1.8	95%	M846721 CCC WC Resource 417 P		
WW	74	15%	<b>EM893465 CCC WC Redemption 7143 PLD ET</b>		
YW	130	15%	EF1170895 WC Rolls Royce 3177 P ET		
MILK	15	95%	EM868977 CML Distinction 318A		
MTL	52	65%	<b>EF1236610 Double-H Dream On 627D ET</b>		
SC	0.8	70%	F1117374 Double-H Tipper 026X		
TSI	267.07	25%	<p>If you believe in not only the sire's impact on greatness, but also the dam, consider this own son of the lot 1 donor in the recent Double-H Charolais Dispersal. Dream On has been a cornerstone in the breed. This homozygous polled son of Redemption embodies a great 876 pound weaning performance that we have come to appreciate from this consistent family.</p>		
CW	23	55%			
REA	0.67	60%			
FAT	-0.009	15%			
MARB	0.10	65%			
BW	WW	YW	ADG		
97	876	1285	3.18		
PAF					



Lot 27

# Char Advantage

An IMI Global Age, Source & Genetic Verification Program for Charolais-influenced Feeder Calves

Adding value through:

- Age & Source Verification
- NHTC, VNB and Beef Care Certification
- Genetic Benchmarking through registered Sires or Dams
- Documentation of health protocols & BQA certification
- Exposure of Charolais influenced genetics to a large list of potential buyers

**For more information, contact:**  
 Dr. Clint Rusk, Executive Vice President  
 (816) 464-2474 ext 101 • [crusk@charolaisusa.com](mailto:crusk@charolaisusa.com)  
[www.charolaisusa.com](http://www.charolaisusa.com)



# Hook's Hope 208H



CE	12.7	35%
BW	0.5	35%
WW	84.8	25%
YW	133.1	20%
MILK	20.4	75%
STAY	20.6	5%
DOC	13.8	25%
CW	20.7	80%
MARB	0.47	15%
REA	0.53	99%
API	166.2	10%
TI	92.6	15%

## LBRS Genesis G69



Reference Sire for Lots 28 & 29

When we purchased Hook's Hope a few years ago we were excited for the potential we saw from her elegance, excellent phenotype and impressive EPDs. We have not been disappointed at all in this fantastic young cow. She stamps her calves with quality, eye-appeal and growth. Her numbers are impressive across the board as well. A true calving ease, yet high growth cow, she ranks in the top 5% Stay, 10% API, 15% Marb. and TI, 20% YW, ADG and MCE, 25% WW and Doc and 35% CE and BW. We've loved her son, HTG Integrity, since he was born, and he continues to impress us day in and day out. He sells as lot 28. Don't miss your chance to get in on these genetics!

## Lot 28 HTG Integrity 346L

CE	14.1	20%	February 19, 2023	Polled	4300790
BW	-1.3	10%	3254156 WS Proclamation E202		
WW	90.8	15%	<b>3603651 LBRS Genesis G69</b>		
YW	137.7	15%	3164038 LBR Diana D69		
MILK	24.0	45%	3459048 TJ Heisman 388F		
STAY	20.1	10%	<b>3715193 Hook's Hope 208H</b>		
DOC	16.8	10%	3013447 Hook's Ceres 11C		
CW	26.9	55%			
MARB	0.6	5%			
REA	0.55	99%			
API	178.1	3%			
TI	101.3	3%			
BW	WW	YW	ADG		
89	795	1397	3.76		

This is exactly what we had in mind when we added Hope to our donor lineup. Integrity is impressive in his growth, style, EPDs and phenotype. He's an outstanding herd bull prospect with presence, power, and a great pedigree. He is a true CE and growth bull with EPDs ranking in the top 10% for BW, 15% WW, YW and MCE, 20% CE and MWW, and 3% API and TI. In addition, he'll add carcass quality ranking in the top 5% Marb. Homo black, homo polled, purebred Retaining 1/3 semen interest



Lot 28



# GLS Dash of Class D612



CE	15.2	10%
BW	-2.0	10%
WW	89.2	15%
YW	131.8	20%
MILK	16.0	95%
STAY	9.4	99%
DOC	12.1	45%
CW	26.2	55%
MARB	0.32	25%
REA	0.83	60%
API	143.7	35%
TI	94.2	10%



## Past Progeny of Classy



HTG Selena 49G | Daughter of Dash of Class

## Lot 29 HTG Gladiator 354L



Lot 29

CE	14.2	20%	March 7, 2023	Polled	4300797
BW	-0.3	25%	3254156 WS Proclamation E202		
WW	88.1	20%	<b>3603651 LBRS Genesis G69</b>		
YW	132.8	20%	3164038 LBR Diana D69		
MILK	21.8	65%	2900283 W/C Executive Order 8543B		
STAY	17.1	35%	<b>3156920 GLS Dash of Class D612</b>		
DOC	15.9	10%	2867130 GLS Black Velvet B91		
CW	28.8	45%			
MARB	0.65	4%			
REA	0.77	75%			
API	172.3	5%			
TI	99.8	4%			
BW	WW	YW	ADG		
85	629	1205	3.60		



Year after year, Dash of Class continues to produce attractive, productive, high growth bulls. Gladiator is a calving ease, high growth son of LBRS Genesis. He's very balanced, both phenotypically and on paper. Ranking in the top 4% Marb and TI, 5% API, and 20% CE, WW and YW, this bull is sure to have a great return on investment! Homo black, homo polled, purebred



## Lot 30 HTG Phantom 372L

CE	16.9	4%	March 28, 2023	Polled	4300806
BW	-3.0	3%	2854467 Hook's Black Hawk 50B		
WW	88.4	20%	<b>3468391 KRJ HZN Direct Impact F805</b>		
YW	135.8	15%	3163085 OMF/DK Darling D49		
MILK	15.3	99%	2900283 W/C Executive Order 8543B		
STAY	12.6	85%	<b>3156920 GLS Dash of Class D612</b>		
DOC	8.5	85%	2867130 GLS Black Velvet B91		
CW	38.2	20%	Phantom is extremely balanced across the board. This was a mating that really worked with Dash of Class. He ranks in the top 3% BW, 4% CE and TI, 10% API and REA, 15% YW and Marb, and 20% WW, ADG, and CW. In addition to his great numbers, he's sound, thick, and attractive. His full sister sells as lot 60. Hetero black, homo polled, purebred		
MARB	0.47	15%			
REA	1.17	10%			
API	163.5	10%			
TI	99.3	4%			
BW	WW	YW	ADG		
73	712	1287	3.60		



**KRJ HZN Direct Impact F805**  
Reference Sire

## Lot 31 MPC Kaboom L21

CE	12.1	40%	February 18, 2023	Polled	4231077
BW	-0.3	25%	2675740 WS All-Around Z35		
WW	79.9	40%	<b>3317371 OMF Epic E27</b>		
YW	109.8	65%	2896460 OMF Time Less B100		
MILK	19.3	85%	2900283 W/C Executive Order 8543B		
STAY	15.1	55%	<b>3881255 HILB/SHER Ka-Boom G138</b>		
DOC	12.5	40%	2546592 AJE/HS/MBCC Dynamite		
CW	18.4	80%	This phenotypic standout breeder bull is what we have come to expect from the Kaboom x Epic mating. A full brother sold to Westly in the 2023 sale. He's sound, powerful and is a bull that offers a great blend of CE and growth. Kaboom is truly worth the trip to Clear Lake on March 22. Find him sale day. Homo black, homo polled, purebred		
MARB	0.12	65%			
REA	0.68	90%			
API	131.6	50%			
TI	80.7	50%			
BW	WW	YW	ADG		
89	692	1439	4.66		



**Lot 31**

## Lot 32 MPC Lad L9

CE	15.3	20%	February 5, 2023	Polled	4231068
BW	1.0	70%	2675740 WS All-Around Z35		
WW	87.5	15%	<b>3317371 OMF Epic E27</b>		
YW	138.6	15%	2896460 OMF Time Less B100		
MILK	20.7	80%	2880390 CCR Boulder 1339A		
STAY	14.8	50%	<b>3941183 MPC Jasmine J25</b>		
DOC	17.1	10%	3114442 MPC Sheesa C2		
CW	27.3	70%	Here is an Epic son who can really improve a calf crop. This ¾ blood bull offers top 20% CE and top 15% growth. On top of that, his first calf dam, J25, traces back to the C2 cow family that has landed several sons in the sale bull pen. Lad is an easy choice for any progressive cattleman as he will add pounds without sacrificing calving ease. Homo black, homo polled, 3/4 blood		
MARB	0.31	60%			
REA	0.88	25%			
API	138.8	45%			
TI	86.2	35%			
BW	WW	YW	ADG		
80	741	1287	3.40		



**Lot 32**



## Lot 33 MPC Lancer L7

CE	11.1	70%	February 2, 2023	Polled	4231058
BW	-1.2	30%	2675740 WS All-Around Z35		
WW	81.9	30%	3317371 OMF Epic E27		
YW	123.4	40%	2896460 OMF Time Less B100		
MILK	20.1	85%	N/A		
STAY	6.1	99%	4231057 MPC J18		
DOC	15.7	15%	N/A		
CW	46.6	15%	<p>Lot 33 is a stout designed, calving ease Epic son out of a first calf Insight daughter. He's big hipped, long bodied and is a bull who sets down on a big square foot. We campaigned Lancer at the MN State Fair where he was named Reserve Calf Champion. This bull will definitely sire offspring with modest birth weights that will pound the scales at weaning. Homo black, homo polled, 1/2 blood</p>		
MARB	0.2	80%			
REA	0.98	10%			
API	109.7	90%			
TI	81.0	50%			
BW	86	WW	735	YW	1275
		ADG	3.37		



Lot 33

## Lot 34 MPC Lennox L18

CE	14.7	15%	February 16, 2023	Polled	4231075
BW	-0.8	15%	2675740 WS All-Around Z35		
WW	85.8	25%	3317371 OMF Epic E27		
YW	126.3	30%	2896460 OMF Time Less B100		
MILK	22.2	60%	3499385 W/C Fort Knox 609F		
STAY	16.5	40%	3941191 MPC Jewel J37		
DOC	15.9	10%	2538616 HS Sweet Gem X141N		
CW	33.2	30%	<p>With the look and style this guy offers, along with a balanced genetic profile, it's hard not to like L18. I seem to keep going back to OMF Epic because his offspring flat out work. This purebred offers a great blend of growth and power without sacrificing calving ease and birth weight, ranking in the top 15%. Be sure to find him sale day. Homo black, homo polled, purebred</p>		
MARB	0.3	30%			
REA	1.01	25%			
API	153.6	20%			
TI	91.4	15%			
BW	91	WW	797	YW	1253
		ADG	2.85		



Lot 34

## Lot 35 HTG Summit 319L

CE	8.3	90%	February 1, 2023	Polled	4300793
BW	3.0	85%	3254156 WS Proclamation E202		
WW	90.6	15%	3603651 LBRS Genesis G69		
YW	136.2	15%	3164038 LBR Diana D69		
MILK	25.0	35%	2341498 Flying B Cut Above		
STAY	16.5	40%	2659833 AJE/HS/MB GlimmeringHope		
DOC	17.7	3%	2242080 JF Ebony's Joy 479P		
CW	55.7	2%	<p>This bull has been a standout since he was born with impressive growth, weaning at 772 pounds. His sire, LBRS Genesis, has been a go-to bull for us, siring calves that are extremely vigorous at birth and then really perform. Summit's EPDs rank him in the top 2% CW, 10% REA, and 15% WW and YW. He's going to produce high growth, high carcass quality calves. Homo black, homo polled, purebred</p>		
MARB	0.29	30%			
REA	1.11	10%			
API	139.7	40%			
TI	88.3	25%			
BW	94	WW	772	YW	1311
		ADG	3.37		



Lot 35



## Lot 36 HTG Tundra 327L

CE	8.3	90%	February 6, 2023	Polled	4300814
BW	2.9	85%	2605922 GW-WBF Substance 820Y		
WW	79.7	45%	<b>2854454 Hook's Baltic 17B</b>		
YW	127.2	30%	2674921 Hook's Sarita 92Y		
MILK	13.7	99%	2341498 Flying B Cut Above		
STAY	15.5	55%	<b>2659833 AJE/HS/MB GlimmeringHope</b>		
DOC	15.9	10%	2242080 JF Ebonys Joy 479P		
CW	34.7	25%	Glimmering Hope stamps an attractive look in her calves, and Tundra is no exception. Stout, big footed, and sound describe this bull well. Check out his impressive 716 pound weaning weight and 1330 pound yearling weight. He'll make a great terminal sire with his above average growth traits. Homo black, homo polled, purebred		
MARB	-0.03	95%			
REA	0.7	85%			
API	116.7	80%			
TI	73.0	80%			
BW	WW	YW	ADG		
ET	716	1330	3.84		



Lot 36

## Lot 37 HTG Heroic 365L

CE	10.9	60%	March 13, 2023	Polled	4300804
BW	0.7	40%	2675740 WS All-Around Z35		
WW	83.8	30%	<b>3317371 OMF Epic E27</b>		
YW	126.8	30%	2896460 OMF Time Less B100		
MILK	21.7	65%	2605922 GW-WBF Substance 820Y		
STAY	16.5	40%	<b>3827707 HTG Trisha 08G</b>		
DOC	19.2	2%	2659833 AJE/HS/MB GlimmeringHope		
CW	41.9	10%	Heroic is very balanced in his numbers from top to bottom. He's a big spread bull with his actual BW of 78 pounds to his 738 pound WW. His dam is a productive, attractive Glimmering Hope daughter. He'll add look and pounds to your feeder calves. In addition, his carcass traits will add value to your calves with his top 10% CW, 15% BF, and 40% REA. Homo black, homo polled, purebred		
MARB	0.12	65%			
REA	0.92	40%			
API	135.8	45%			
TI	83.4	40%			
BW	WW	YW	ADG		
78	738	1254	3.22		



Lot 37

## Lot 38 HTG Haze 312L

CE	15.7	20%	January 19, 2023	Polled	4300792
BW	-2.3	15%	2854180 Hook's Beacon 56B		
WW	60.3	95%	<b>3789447 KBHR Honor H060</b>		
YW	91.6	95%	2974794 WS Miss Sugar C4		
MILK	25.6	40%	2835949 PVF Insight 0129		
STAY	20.1	5%	<b>3597865 HTG Jasmine 01G</b>		
DOC	10.9	70%	2659833 AJE/HS/MB GlimmeringHope		
CW	41.0	30%	Expect Haze to produce good feeder calves as he combines calving ease with good carcass traits. His granddam, Glimmering Hope, has had great longevity, and Haze ranks in the top 5% for Stay. His dam is a beautiful young cow with a great udder. He has style and balance and is ready to go to work for you. Homo black, homo polled, ¾ blood		
MARB	0.44	45%			
REA	1.01	10%			
API	149.7	30%			
TI	76.1	70%			
BW	WW	YW	ADG		
74	645	1180	3.34		



Lot 38



## Lot 39 MPC Craftsman L27



Lot 39

CE	13.9	20%	February 25, 2023	Polled	4231080
BW	0.8	40%	3568352 MR SR Mic Drop G1534		
WW	89.8	15%	<b>3953637 OMF Journeyman J24</b>		
YW	139.3	15%	3162171 OMF Deka D23		
MILK	24.1	45%	3044489 GLS/JRB Cash Flow 163C		
STAY	14.1	70%	<b>3435568 GLS F21</b>		
DOC	10.7	65%	2601853 GLS Precious Y19		
CW	30.5	35%	<p>The Journeyman calves have arrived, and I hope you like them as much as I do! L27 possesses an elite look with balanced traits, charting a calving ease figure in the top 20%, growth figures in the top 15%, and API and TI in the top 20th and 10th percentile respectively. Craftsman is a good looking scamp with plenty of mass and presence that can get out and move, too. He's a true standout who could fit nicely into any operation looking to add growth without sacrificing BW. Homo black, homo polled, purebred</p>		
MARB	0.45	15%			
REA	0.72	90%			
API	154.9	20%			
TI	95.2	10%			
BW	WW	YW	ADG		
85	746	1258	3.20		



## Lot 40 MPC Buster L2

CE	7.0	99%	January 14, 2023	Polled	4231064
BW	4.3	99%	2285555 HTP SVF In Dew Time		
WW	80.0	40%	<b>2403649 WELSHS Dew It Right067T</b>		
YW	116.3	55%	2204433 SVF/NJC Senerita N29		
MILK	21.4	75%	2614801 W/C No Remorse 763Y		
STAY	15.3	45%	<b>3351698 MPC Sheesa E3</b>		
DOC	12.1	55%	2297315 GFI Sheesa Siman R5061		
CW	39.3	30%	<p>Buster is stout, performance-oriented and ready to cover cows. He has been a standout from day one and continues to impress me every time I lay eyes on him. He would complement a set of British based cows very well with progeny that will pound the scales come weaning. Homo black, homo polled, 3/4 blood</p>		
MARB	0.04	99%			
REA	0.83	25%			
API	103.0	95%			
TI	68.8	90%			
BW	WW	YW	ADG		
89	725	1400	4.20		



Lot 40

## Lot 41 MPC Right On L8



Lot 41

CE	12.8	30%	February 3, 2023	Polled	4231067
BW	-0.6	20%	2854480 Hook's Bozeman 8B		
WW	87.1	20%	<b>3325668 MR SR 71 Right Now E1538</b>		
YW	129.3	25%	3078408 Miss SR C1538		
MILK	22.7	55%	3254156 WS Proclamation E202		
STAY	16.2	50%	<b>3941192 MPC Jenny J38</b>		
DOC	15.5	15%	2727853 Lady Sarge A3104		
CW	21.8	75%	<p>Lot 41 is a correct, stout, balanced trait bull with a go-to pedigree. This bull charts a balanced set of EPDs and is backed by the big time stud Right Now whose progeny flat out work. L8 was a standout throughout the summer and was found by many visitors in the pasture. He continues to impress among his contemporaries. Homo black, homo polled, purebred</p>		
MARB	0.18	50%			
REA	0.83	65%			
API	144.0	35%			
TI	88.6	25%			
BW	WW	YW	ADG		
82	706	1324	3.55		





## Lot 42 MPC Ledger L34

CE	11.7	50%	March 19, 2023	Polled	4231086
BW	-0.1	25%	3282048 Rubys Turnpike 771E		
WW	85.7	25%	<b>4006998 HTG Watson 157J</b>		
YW	135.3	15%	3156920 GLS Dash of Class D612		
MILK	21.4	65%	2659754 GLS Integrate Z3		
STAY	11.1	95%	<b>3114442 MPC Sheesa C2</b>		
DOC	11.0	60%	2297315 GFI Sheesa Siman R5061		
CW	40.9	15%	<p>Here's a massive bull with substance and balance. He's full of red meat and body and can still get out and move like a cat. Ledger's look and skeletal design are what we were hoping for when we added HTG Watson to our program two years ago. The pedigree that backs L34 is stacked with performance and generations of cow families that are mainstays in our program. Rely on this predictable pedigree to add performance and value to your operation. Homo black, homo polled, purebred</p>		
MARB	0.05	75%			
REA	0.88	50%			
API	124.7	65%			
TI	83.7	35%			
BW	WW	YW	ADG		
84	788	1311	3.27		



Lot 42

## Lot 43 MPC Low Down L29

CE	11.4	70%	March 6, 2023	Polled	4231082
BW	-0.2	45%	3282048 Rubys Turnpike 771E		
WW	77.9	40%	<b>4006998 HTG Watson 157J</b>		
YW	115.8	50%	3156920 GLS Dash of Class D612		
MILK	20.4	80%	N/A		
STAY	7.9	95%	<b>M1180</b>		
DOC	8.4	90%	N/A		
CW	31.1	55%	<p>This is an outstanding phenotype bull that comes from a predictable cow family. Correct, balanced and good looking are all terms that can accurately describe L29. He's another Watson son that we really like! He will stamp a great look into a calf crop. Hetero black, homo polled, 1/2 blood</p>		
MARB	-0.01	99%			
REA	1.1	4%			
API	99.6	95%			
TI	73.2	80%			
BW	WW	YW	ADG		
82	708	1226	3.23		



Lot 43

## Lot 44 Whitewater Creek Country

CE	13.0	30%	January 15, 2023	Polled	4196740
BW	1.6	55%	3336150 W/C Double Down 5014E		
WW	77.7	55%	<b>3658592 WHF/JS/CCS Double Up G365</b>		
YW	114.0	60%	3118556 WHF Summer 365C		
MILK	19.3	85%	3336318 W/C Style 69E		
STAY	8.2	99%	<b>3942557 RJ PF Miss Rose J328</b>		
DOC	10.0	70%	2790160 W/C RJ 3028A		
CW	28.6	50%	<p>Country is a CE prospect sired by Double Up who offers a unique look and build. He's big footed, bold ribbed and has plenty of base width. This bull can get out and flat go and looks like a stud. Be sure to find this breeder prospect sale day. Homo black, homo polled, purebred</p>		
MARB	-0.01	90%			
REA	1.09	20%			
API	110.3	95%			
TI	75.4	75%			
BW	WW	YW	ADG		
76	691	1280	3.68		



Lot 44



## Lot 45 HTG Passport 314L



Lot 45

CE	15.1	15%	January 24, 2023	Polled	4300795
BW	-1.6	10%	2854180 Hook's Beacon 56B		
WW	75.1	65%	<b>3789447 KBHR Honor H060</b>		
YW	117.8	50%	2974794 WS Miss Sugar C4		
MILK	28.7	15%	3268058 RFG/K-LER Elevation 727E		
STAY	17.8	25%	<b>3731788 HTG London 01H</b>		
DOC	9.9	75%	3405063 HILB Miss Paris F665		
CW	14.3	95%	<p>Lot 45 is a son of KBHR Honor and is a great calving ease option without sacrificing growth. Passport had a 75 pound birth weight and weaned at 710 pounds. His EPDs are very balanced, ranking in the top 10% BW, 15% CE, MCE, Milk and API, and top 25% TI. Homo black, Homo polled, purebred</p>		
MARB	0.39	20%			
REA	0.67	90%			
API	159.0	15%			
TI	88.3	25%			
BW	WW	YW	ADG		
75	710	1192	3.00		



## Lot 46 HTG Grit 341L

CE	10.7	75%	February 16, 2023	Polled	4300796
BW	-0.5	40%	2675740 WS All-Around Z35		
WW	78.7	40%	<b>3317371 OMF Epic E27</b>		
YW	114.3	60%	2896460 OMF Time Less B100		
MILK	19.9	85%	HTG Harmon D01 (purebred commercial Simmental)		
STAY	9.3	95%	<b>3985835 HTG Gretchen 14F</b>		
DOC	12.9	45%	HTG Gabby D10 (purebred commercial Simmental)		
CW	-2.4	99%	<p>Grit is out of a very maternal cow family with cows who have great udders, breed back on time and always raise big calves. His sire, OMF Epic, needs no introduction as he was the lead bull in the 2018 NWSS Grand Champion percentage pen of five. Grit is a stout, balanced and correct February bull. He'll add pounds and profit to your feeder calves. Hetero black, Homo polled, ½ blood</p>		
MARB	0.15	90%			
REA	0.46	90%			
API	109.8	85%			
TI	77.0	65%			
BW	WW	YW	ADG		
91	633	1137	3.15		



Lot 46

## Lot 47 MPC Sultry Style L20



Lot 47

CE	-	-	February 18, 2023	Polled	N/A
BW	-	-	13897812 Gambles Hot Rod		
WW	-	-	<b>2573675 Silveiras Style 9303</b>		
YW	-	-	14328277 Silveiras Elba 2520		
MILK	-	-	N/A		
STAY	-	-	<b>Dress Sultry Games</b>		
DOC	-	-	N/A		
CW	-	-	<p>This black, polled, calving ease prospect offers plenty of look in a stylish package. If you are in the market for a bull who can be your go-to hired hand come calving, find L20 on March 22. Commercial Angus</p>		
MARB	-	-			
REA	-	-			
API	-	-			
TI	-	-			
BW	WW	YW	ADG		
74	718	1205	-		



## Lot 48 MPC Lou L11

CE	11.2	55%	February 7, 2023	Polled	4231070
BW	-1.0	15%	3325668 MR SR 71 Right Now E1538		
WW	65.0	95%	<b>3568352 MR SR Mic Drop G1534</b>		
YW	101.7	85%	3070176 Miss SR C1534		
MILK	18.8	85%	3547463 HILB Fast Lane E311		
STAY	18.4	20%	<b>3794654 MPC Hermie H42</b>		
DOC	16.2	10%	3114446 MPC Cami C30		
CW	15.6	90%	<p>L11 is a go-to calving ease prospect who offers a moderate birth weight without sacrificing growth. He's long bodied, clean jointed and ready to go to work. Lou is backed by a very good young Fast Lane daughter. The Fast Lane offspring have left a big impact on our program. Homo black, homo polled, purebred</p>		
MARB	0.2	45%			
REA	0.69	90%			
API	140.7	35%			
TI	76.2	70%			
BW	WW	YW	ADG		
85	690	1266	3.60		



Lot 48



Lot 49

## Lot 49 MPC Kudos K10N

CE	14.3	20%	December 9, 2022	Polled	4313287
BW	-0.8	15%	2900283 W/C Executive Order 8543B		
WW	70.9	80%	<b>3547466 HILB Prime Investigation F505</b>		
YW	107.9	70%	2589221 AJE Ms Chanel Y32		
MILK	23.0	55%	3547466 HILB Prime Investigation F505		
STAY	13.8	70%	<b>4120166 MPC H39</b>		
DOC	9.5	75%	2380098 Pearsons Ms Phenom		
CW	23.0	70%	<p>Kudos is an age advanced bull with built in calving ease, ranking in the top 20% for CE and top 15% for BW. Black, polled, purebred</p>		
MARB	-0.03	95%			
REA	0.79	70%			
API	123.7	70%			
TI	74.1	75%			
BW	WW	YW	ADG		
84	687	1162	2.96		

## Lot 50 MPC King K16N

CE	13.6	25%	December 16, 2022	Polled	4313285
BW	-0.3	25%	2900283 W/C Executive Order 8543B		
WW	67.1	90%	<b>3547466 HILB Prime Investigation F505</b>		
YW	99.4	85%	2589221 AJE Ms Chanel Y32		
MILK	19.5	80%	2565119 SCP Yo Da Man		
STAY	14.3	65%	<b>2878051 Volz's Bibi</b>		
DOC	8.6	85%	2531925 Volzs Sister Ann		
CW	18.2	85%	<p>Here's another Prime Investigation son who is an age advanced bull with good calving ease. He ranks in the top 25% for both CE and BW. Black, polled, purebred</p>		
MARB	-0.04	95%			
REA	0.76	75%			
API	120.5	75%			
TI	70.4	90%			
BW	WW	YW	ADG		
77	653	1141	2.91		



Lot 50



## Lot 51 MPC Knight K8N



CE	12.3	40%	December 8, 2022	Polled	4313286
BW	0.4	35%	2900283 W/C Executive Order 8543B		
WW	67.3	90%	<b>3547466 HILB Prime Investigation F505</b>		
YW	102.3	80%	2589221 AJE Ms Chanel Y32		
MILK	17.4	90%	2760713 MPC Aces Z9		
STAY	12.5	85%	<b>3435261 MPC Frieda F32</b>		
DOC	9.1	80%	2878051 Volz's Bibi		
CW	22.3	70%	This trio of December born purebred bulls by HILB Prime Investigation are long bodied, good made bulls who can get out and cover a set of cows. All three will add growth without that added birth weight. They come from cow families that fill the keeper pen year after year. The Prime Investigation sons have been well received the last few years and when you see this trio in person, you'll understand why. Black, polled, purebred		
MARB	0.05	80%			
REA	0.68	90%			
API	119.1	75%			
TI	71.5	85%			
BW	WW	YW	ADG		
80	617	1172	3.47		

*Offering services for the beef and dairy cattle industry*

# NORTHERN Genetics



- DONOR COW HOUSING
- CONVENTIONAL FLUSHING
  - IVF FLUSHING
- EMBRYO TRANSFERS
- RECIPIENT COWS

SCOTT, JULIE, BETH & KATIE MOLLER

DUSTIN & MAGGIE FISCHER

612.716.7401

13118 57TH STREET

CLEAR LAKE, MN 55319

MNNORTHERNGENETICS@GMAIL.COM





## Lot 52 NGC Gracelynn 923G ET



CE	5.5	90%	
BW	1.4	90%	
WW	69	15%	
YW	127	8%	
MILK	33	7%	
MTL	68	4%	
SC	1.1	30%	
TSI	264.91	15%	
CW	36	5%	
REA	0.65	55%	
FAT	0.025	80%	
MARB	0.14	40%	
BW	WW	YW	ADG
93	-	-	-
PAF			

### Donor Cow Alert!!

Sells open and ready to flush! Gracelynn is a direct daughter of the famous Nancy 6100. This is an unbelievable young donor who is full of youthfulness. She is designed to be in the spotlight. She is a full sister to the Double-H Charolais dispersal high seller who sold to Full Circle Cattle Company at \$15,500. Gracelynn is gorgeous in her udder, massive in her body and is as correct as you will find. She is a very balanced female: top 4% MTL, 5% CW, 7% Milk, 8% YW, 15% WW, 40% Marb., and 15% TSI. Gracelynn's last conventional flush produced 15 out of 16 grade one embryos. Look at her picture and her video and then imagine what she will look like in your donor pen; she truly is a special female!

February 21, 2019 Polled EF1298255

M784935 Sparrows Fargo 811U

EM809088 RBM Fargo Y111

F1056859 HC Rhinestone 5100

M269828 WCR Sir Duke 761

EF1061246 M6 Ms 761 Nancy 6100 P ET

EF990737 M6 Ms H45 Nancy 382 ET

M6 Ms 761 Nancy 6100 P ET  
Reference Dam to Lot 52



## Lot 52A NGC Lakelynn 362L

CE	11.4	50%	September 25, 2023	Polled	F1349490
BW	0.8	85%	M866811 LT Citation 5228 PLD		
WW	81	4%	EM964793 NGC Capitalist 118J ET		
YW	145	3%	EF1220823 M6 New Germaine 599 P ET		
MILK	36	3%	EM809088 RBM Fargo Y111		
MTL	77	1%	EF1298255 NGC Gracelynn 923G ET		
SC	1.8	3%	EF1061246 M6 Ms Nancy 6100 P ET		
TSI	286.71	4%	What really sets Gracelynn apart is her natural calf		
CW	40	6%	by NGC Capitalist 118J ET. This calf is stunning; not		
REA	0.97	7%	only is she impressive in her conformation but her		
FAT	0.016	55%	EPD profile is stellar. The first Capitalist daughter sold		
MARB	0.28	7%	on public auction in Canada and brought \$13,500		
BW	WW	YW	ADG		
82	-	-	-		
PAF					

for our partners, Circle Cee Charolais. This pair will be worth the drive to Clear Lake, MN. **Retaining one successful flush at the buyer's convenience and seller's expense.**



Lot 52A



## Lot 53 NGC Cassidy 331L

CE	17.6	5%	February 1, 2023	Polled	F1349492
BW	-2.2	30%	M866811 LT Citation 5228 PLD		
WW	81	4%	<b>EM964793 NGC Capitalist 118J ET</b>		
YW	149	2%	EF1220823 M6 New Germaine 599 P ET		
MILK	36	3%	EM809088 RBM Fargo Y111		
MTL	76	1%	<b>EF1275503 NGC Caralyn 919G ET</b>		
SC	1.8	2%	EF1061246 M6 Ms 761 Nancy 6100 P ET		
TSI	292.94	2%	<p>Yes, this is a full sister in blood to NGC Lakelynn 362L who sells as lot 52A. Cassidy has the breeding pieces to become a foundation female. We enjoy this heifer for her type and kind: elegant in her presence, square and stout in her build and very correct in her foot and leg. Cassidy is a curve-bending kind of female with her top 5% CE to top 2% YW. Look at the rest of her EPDs: 1% MTL, 4% WW and SC, 3% Milk, 6% CW, 10% REA, 20% Marb. and top 2% TSI at 292.94. <b>Retaining one successful flush at the buyer's convenience and seller's expense.</b></p>		
CW	40	6%			
REA	0.92	10%			
FAT	0.022	70%			
MARB	0.21	20%			
BW	WW	YW	ADG		
78	663	-	-		
PAF					



Lot 54

## Lot 55 HCC Elegance 389L ET

CE	12.0	45%	May 6, 2023	Polled	EF1350204
BW	-1.8	40%	M898189 LT Authority 7229 PLD		
WW	72	15%	M927067 LT Badge 9184 PLD		
YW	123	25%	F1225399 LT Madalynn 6108 PLD		
MILK	26	40%	EM756753 M6 New Standard 842 P ET		
MTL	62	25%	EF1185544 M&M Ms New Standard 3517 PLDET		
SC	1.8	2%	EF1117989 M&M Ms Stealth 9509 PLD ET		
TSI	261.08	35%	Elegance is a big, stout, attractive LT Badge daughter who is out of the superb Ms New Standard 3517 donor. Looking to add a female with a front pasture look who has a solid pedigree? We have calved in our first full sisters, and they are great momma cows with nice udders and a strong mothering instinct. Elegance is in a different age group and will be a very competitive show heifer. This PAF daughter of Badge is certainly a high caliber female. <b>Retaining one successful flush at the buyer's convenience and seller's expense.</b>		
CW	35	15%			
REA	0.81	25%			
FAT	0.014	50%			
MARB	0.07	75%			
BW	WW	YW	ADG		
84	604	-	-		
PAF					



Lot 55

## Lot 54 NGC HCC Clara 378L

CE	16.0	10%	April 8, 2023	Polled	F1350203
BW	-1.2	50%	M866811 LT Citation 5228 PLD		
WW	76	8%	EM964793 NGC Capitalist 118J ET		
YW	133	10%	EF1220823 M6 New Germaine 599 P ET		
MILK	33	7%	M846721 CCC WC Resource 417 P		
MTL	71	3%	EF1258056 NGC Sophie 810F ET		
SC	1.8	2%	EF1200986 NGC Paige 335B ET		
TSI	281.13	7%	The Nancy 6100 cow family has always been a big part of our operation because of their quality and consistency. Clara is a very classy Capitalist daughter who is complete and big bodied. Her dam was the 2020 Bred & Owned Reserve Cow/Calf at Charolais Junior Nationals. She is a beautifully patterned female who is top 1% Marb. Clara has a high class pedigree and is extremely high on her EPD profile. She will make a fantastic cow.		
CW	31	25%			
REA	0.85	20%			
FAT	0.023	70%			
MARB	0.45	1%			
BW	WW	YW	ADG		
75	-	-	-		
PAF					



## Lot 56 NGC Lexie 323L ET

CE	13.0	35%	January 22, 2023	Polled	EF1349574
BW	-0.9	55%	M760665 LT Rushmore 8060 PLD		
WW	70	20%	<b>M943428 RBM Keystone H41</b>		
YW	131	15%	F1260468 RBM Jasmine F251		
MILK	30	15%	EM809088 RBM Fargo Y111		
MTL	65	15%	<b>EF1293706 NGC Gaiana 930G ET</b>		
SC	1.6	5%	EF1220823 M6 New Germaine 599 P ET		
TSI	274.77	15%	This heifer is a direct daughter of NGC Gaiana 930G ET and is out of the up and coming RBM Keystone. Keystone has been siring high sellers throughout the USA and Canada. Look at her maternal sibs who sell in this sale as lots 6 and 7. If you want to get into a cow line that produces quality cattle who perform, look amazing and yet take you to a whole new level on EPD spread, consider this exciting lot. We have mated her mother three different ways, and every mating is rock solid. Big time pedigree and big time cow power with a big time future!		
CW	35	15%			
REA	0.84	20%			
FAT	0.052	100%			
MARB	0.30	6%			
BW	WW	YW	ADG		
78	687	-	-		
PAF					



Lot 56

## Lot 57 NGC Briar 333L

CE	9.2	70%	February 8, 2023	Polled	F1349493
BW	0.1	75%	M880381 LT Affinity 6221 PLD		
WW	74	15%	<b>M964794 NGC Defender 135J</b>		
YW	137	7%	EF1200988 NGC Ms Nancy 418B ET		
MILK	29	20%	EM 898286 LT Inception 7456 PLD ET		
MTL	66	9%	<b>EF1308198 NGC Jacey 101J ET</b>		
SC	2.0	1%	EF1185544 M&M Ms New Standard 3517 PLDET		
TSI	279.44	8%	Show heifer alert here! She is a feminine, huge bodied and ultra-correct female out of a very nice first calf heifer. We really like this female from her pedigree. There's many donors throughout her pedigree including Ms New Standard 3517, Nancy 6100, LT Brenda 3357 and her great grandmother Ms Stealth 9509. Stacking greatness on top of greatness, you get rewarded with an attractive, high genetic breeding piece. Look at this heifer's picture and video, and I'm confident you will see great potential.		
CW	39	8%			
REA	0.94	8%			
FAT	0.048	100%			
MARB	0.25	15%			
BW	WW	YW	ADG		
88	688	-	-		
PAF					



Lot 57

## Lot 58 HCC Eve 390L ET

CE	6.7	90%	May 10, 2023	Polled	EF1350219
BW	-0.1	75%	M896459 EC Cracker Jack 234 PLD		
WW	76	9%	<b>M942431 KC Jack 0891P</b>		
YW	131	15%	F1260255 KC Ms Profit Maker 8491P		
MILK	37	2%	EM509419 JDJ Smokester J1377 P ET		
MTL	74	2%	<b>F1143150 SM Ms Smokester Y150 P</b>		
SC	1.4	15%	F1052050 SM Ms Top Class S667		
TSI	272.08	20%	Eve is a very high growth female who goes back to a big, stout JDJ Smokester daughter. Her donor dam was a big, stout heavy milking cow that we retained many females from. Eve has big time performance numbers and carcass traits. She will make a great cow as she is in the top 2% Milk and MTL. If you are in the market for a different kind of pedigree that will produce high growth calves, look at her.		
CW	37	10%			
REA	1.08	3%			
FAT	-0.018	4%			
MARB	0.12	60%			
BW	WW	YW	ADG		
95	696	-	-		
PAC					



KC Jack 0891 P  
Reference Sire



## Lot 59 HCC Haven 388L

CE	8.5	75%	May 3, 2023	Polled	F1350157
BW	0.6	85%	M866811 LT Citation 5228 PLD		
WW	73	15%	<b>EM965032 HCC Edge 117J ET</b>		
YW	122	30%	EF1220823 M6 New Germaine 599 P ET		
MILK	26	35%	EM509419 JDJ Smokester J1377 P ET		
MTL	63	20%	<b>F1143150 SM Ms Smokester Y150 P</b>		
SC	1.7	5%	F1052050 SM Ms Top Class S667		
TSI	262.18	35%	<p>Lot 59 is a natural born daughter of our donor cow Smokester Y150. This May heifer has a tremendous amount of stretch and yet has a very nice, attractive look. Haven goes back to Germaine 599 and Citation, which has been a very productive mating, producing wonderful cows. Haven is a very balanced female who also has a solid pedigree. She will add carcass and growth to her calves.</p>		
CW	28	35%			
REA	1.09	3%			
FAT	-0.014	7%			
MARB	0.11	60%			
BW	WW	YW			
85	550	-			
PAF					



SM Ms Smokester Y150 P  
Reference Dam

## Lot 60 HTG Victoria 361L

CE	16.6	5%	March 10, 2023	Polled	4300826
BW	-2.0	10%	2854467 Hook's Black Hawk 50B		
WW	87.9	20%	<b>3468391 KRJ HZN Direct Impact F805</b>		
YW	132.9	20%	3163085 OMF/DK Darling D49		
MILK	15.3	99%	2900283 W/C Executive Order 8543B		
STAY	15.3	55%	<b>3156920 GLS Dash of Class D612</b>		
DOC	7.2	90%	2867130 GLS Black Velvet B91		
CW	33.2	30%	<p>This Dash of Class daughter is sound, big-ribbed, and attractive. She has great numbers and ranks in the top 5% CE, 10% BW, API, and TI, 15% Marb. and 20% WW and YW. Her full brother sells as lot 30. Victoria is going to be a great addition to any herd with her donor potential. Bid with confidence on this one! Black, homo polled, purebred <b>Retaining one successful flush at the buyer's convenience and seller's expense.</b></p>		
MARB	0.43	15%			
REA	1.0	25%			
API	163.7	10%			
TI	96.4	10%			
BW	WW	YW			
74	588	-			



Lot 60

## Lot 61 HTG Delilah 323L

CE	15.5	10%	February 4, 2023	Polled	4300820
BW	-2.2	5%	2854180 Hook's Beacon 56B		
WW	94.7	10%	<b>3563436 CLRS Guardian 317G</b>		
YW	141.3	10%	2735679 CLRS Always Xcellent		
MILK	24.0	45%	2900283 W/C Executive Order 8543B		
STAY	15.7	50%	<b>3156920 GLS Dash of Class D612</b>		
DOC	6.2	95%	2867130 GLS Black Velvet B91		
CW	39.6	15%	<p>We can't say enough good things about our Dash of Class daughters. They're all built from the same elegant, big middled, eye-catching mold. Here's your chance to add one to your herd with lots 60 and 61. This Guardian female is great on paper: top 2% TI, 4% API, 5% BW, and 10% CE, WW, YW, and Marb. Her full sister calved for us in February and is very maternal. Black, homo polled, purebred</p>		
MARB	0.57	10%			
REA	1.02	20%			
API	173.2	4%			
TI	104.8	2%			
BW	WW	YW			
74	-	-			



Lot 61



## Lot 62 HTG Journey 328L

CE	14.8	25%	February 8, 2023	Polled	4300807
BW	-0.9	35%	3271380 Bridle Bit Eclipse E744		
WW	88.1	15%	<b>3563620 Hook's Galileo 210G</b>		
YW	135.8	20%	3253753 Hook's Evita 18E		
MILK	30.1	10%	3254156 WS Proclamation E202		
STAY	16.9	30%	<b>4006990 HTG Miss Holland 115J</b>		
DOC	18.1	4%	3405063 HILB Miss Paris F665		
CW	39.9	30%	<p>Lot 62 is a granddaughter of HILB Miss Paris, the most successful Simmental heifer we exhibited in our junior career. Journey's dam is a very maternal young cow. Top EPDs across the board for this heifer, including top 2% TI, 4% API and Marb, 10% Milk and MWW and 15% WW. She has a bright future ahead of her. Homo black, homo polled, 3/4 blood</p>		
MARB	0.86	4%			
REA	0.56	75%			
API	174.4	4%			
TI	102.2	2%			
BW	70	-	WW	-	ADG
			YW	-	-



Lot 62

## Lot 63 HTG Ramona 357L

CE	16.9	4%	March 10, 2023	Polled	4300812
BW	-1.7	10%	3271380 Bridle Bit Eclipse E744		
WW	84.0	30%	<b>3563620 Hook's Galileo 210G</b>		
YW	130.4	25%	3253753 Hook's Evita 18E		
MILK	29.1	15%	3282048 Rubys Turnpike 771E		
STAY	16.4	45%	<b>4006980 HTG Charm 121J</b>		
DOC	15.2	15%	3156920 GLS Dash of Class D612		
CW	35.0	25%	<p>Ramona is an attractive Hook's Galileo daughter out of a two-year-old Dash of Class daughter with a great udder. She ranks in the top 4% CE, 5% API and TI, and 10% BW and Marb, and 15% Milk. Fancy is a good word to describe this heifer. She'll make a great cow and has donor potential. Black, homo polled, purebred</p>		
MARB	0.55	10%			
REA	0.77	75%			
API	171.3	5%			
TI	98.3	5%			
BW	70	-	WW	-	ADG
			YW	-	-



Lot 63

## Lot 64 HTG Lucy 391L

CE	12.0	45%	May 12, 2023	Polled	4300810
BW	1.3	50%	2941225 HHS Mr Entourage 867B		
WW	90.5	15%	<b>3960639 LCDR Reserve 210J</b>		
YW	134.0	20%	3301355 LCDR Ms Echo 43E		
MILK	17.3	90%	2993610 HILB Oracle C033R		
STAY	14.0	70%	<b>4006982 HTG Legacy 138J</b>		
DOC	12.4	40%	3156920 GLS Dash of Class D612		
CW	36.3	25%	<p>Show heifer alert! Already have your junior yearling? Add Lucy to your string and show in the summer yearling class too. She goes back to the great HILB Oracle bull on her dam's side. Add in her sire, LCDR Reserve 210J, and you've got a heifer with some great growth numbers to go along with that look. She ranks in the top 10% TI, 15% WW and Marb, and 20% YW and REA. Black, homo polled, purebred</p>		
MARB	0.43	15%			
REA	1.03	20%			
API	150.2	25%			
TI	93.9	10%			
BW	77	-	WW	-	ADG
			YW	-	-



Lot 64



## Lot 65 NGC Capitalist 118J ET | Semen Packages



CE	17.2	8%	
BW	0.1	70%	
WW	93	1%	
YW	163	1%	
MILK	39	2%	
MTL	86	1%	
SC	2.4	1%	
TSI	308.51	1%	
CW	44	2%	
REA	1.28	1%	
FAT	0.006	60%	
MARB	0.43	2%	
BW	WW	YW	ADG
84	790	1377	3.67
PAF			

### Breed-Leading EPD Profile!

This will be the only time to capitalize on Capitalist in 2024! That's right, these are the first semen packages to sell on this genetic masterpiece. Capitalist was purchased by Circle Cee Charolais and Saddleridge Charolais in Canada in 2022 for \$24,500. Capitalist has done an amazing job for our partners and us in just a short time, and the future of this bull is incredibly bright! Capitalist calves extremely well, and he stamps his calves with power, class and great feet; he will take them to a whole new level on EPDs. Capitalist is the only bull in the breed that's top 1% WW, YW, MTL, SC, REA and TSI at 308.51. In addition, he's top 2% Milk, CW and Marb. and top 4% MCE. Capitalist does all of this and maintains top 8% CE. **We are selling five packages of five units and five signings. This semen is USA only, and buyer is responsible for the cost of shipment.** Owned with Circle Cee Charolais and Saddleridge Charolais.

January 24, 2021 Polled EM964793

M820210 LT Sundance 2251 PLD

M866811 LT Citation 5228 PLD

F1156396 LT Julie 2055 PLD

EM756753 M6 New Standard 842 P ET

EF1220823 M6 New Germaine 599 P ET

EF1149859 M6 Cool Germaine 1145 P ET



## Lot 66 Three Embryos

Dam: M&M Ms New Standard 3517 PLDET Sire: DC/CRJ Tank E108 P

## Lot 67 Three Embryos

Dam: M6 New Germaine 599 P ET Sire: Ace-Orr Lock n Load 243P

## Lot 68 Three Embryos

Dam: M6 New Germaine 599 P ET Sire: RBM Keystone H41



M&M Ms New Standard 3517 PLDET



M6 New Germaine 599 P ET



DC/CRJ Tank E108 P



Ace-Orr Lock n Load 243 P



RBM Keystone H41



***You go great when you go Great Northern!***  
***-Great Northern Railroad-***

Northern Genetics Facility  
13118 57th Street  
Clear Lake, MN 55319

Please bring your catalog on March 22!

