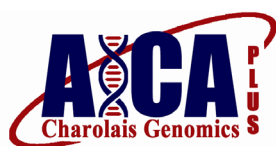


Genomic EPD

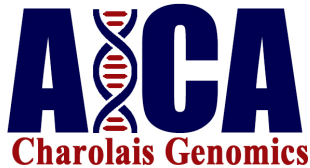
AICA Guidelines for Publishing



Published, refers to an EPD which is printed by AICA: registration paper, internet, breeder performance reports, breeder inventory reports, etc.

Guidelines for publishing EPD currently

- Currently AICA computes EPD for calves reported by members enrolled in either PPR or WHR, the AICA performance programs. This is accomplished by only allowing performance data to be submitted by members enrolled on one of those two programs. EPD for registered sires and dams of these calves are computed and published regardless of the PPR or WHR status.
- Additionally, EPD are reported back to the breeder and published only for those calves that are registered. The exception to this is that EPD are reported back to breeders for non-registered calves when the breeder is enrolled on WHR.
- Animals which are parents (i.e. have progeny in the evaluation) have EPD published with a numeric accuracy value between 0 and 1 (parental EPD)
- Animals that are non-parents which have data as part of a contemporary group have EPD published with an accuracy value equal to “BK” (non-parent EPD).
- Pedigree estimates are computed for those animals without a published EPD only if their Sire and Dam (or Maternal Grand Sire) have a non-parent or parental EPD published. (i.e. either a BK or numeric accuracy value).

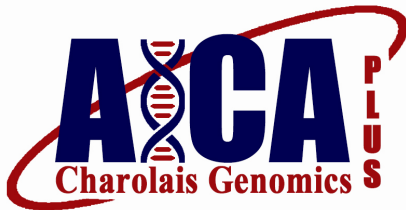


Guidelines for publishing Genomic EPD

- Given a 50K Genotype and MBV is available for the animal the following guidelines apply.
- Same basic guidelines follow as for non-genomic EPD in addition to the following.
- Animals with a genomic enhanced EPD will be published with a numeric accuracy value. This includes non-parent animals that would typically receive a “BK” for accuracy.

Genomic-enhanced Logo:

- Genomic-enhanced Logo will be published on internet animal page and can be used by breeders when the EPD is published in advertising, sale catalogs, etc.
- Genomic-enhanced EPD will be published for all registered animals owned by breeders enrolled on PPR or WHR.
- Genomic-enhanced EPD will be published and available to the breeder for non-registered animals owned by breeders enrolled on WHR when they are the progeny of enrolled females.
- Genomic-enhanced EPD will be published for any registered animal with an EPD computed as part of the Charolais National Cattle Evaluation.
- Interim Genomic Enhanced EPD will only be computed and published for PPR registered animals and/or non-registered animals when those breeders are enrolled in WHR.



Genomic-enhanced Plus Logo:

- For those animals with a birth and weaning record submitted within the appropriate age window for weaning to be adjusted to 205 days a Genomic Plus logo will be available to so designate those animals with a genotype and performance data reported to AICA.
- Additionally for those sires and/or dams with birth and weaning records for progeny included in the AICA genetic evaluation the Genomic Plus logo will be available to so designate those animals with a genotype and performance data reported to AICA.

Interim EPD

- Interim EPD are calculated during the time period between bi-annual Charolais National Cattle Evaluations. An interim EPD is designated with an “I” as the accuracy value.
- Interim EPD are computed for calves within a contemporary group using available performance information and parental EPD. Interim EPD calculations do not result in a change in the parental EPD.