

22nd Annual

Autumn

in the

Ozarks

SEPTEMBER 7, 2015

LABOR DAY • Monday • Noon

Chappell's Sales Arena

Strafford, Missouri



22nd Annual

AUTUMN IN THE OZARKS SALE

SEPTEMBER 7, 2015

LABOR DAY - Monday • Noon

Chappell's Sales Arena - Strafford, Missouri

Located 6 miles east of Springfield. Please refer to the map below.

~ SCHEDULE OF EVENTS ~

Saturday, September 5, 2015

1 p.m. - Sale Cattle Available For Viewing

Sunday, September 6, 2015

Sale Cattle Available For Viewing At Chappell's Arena

Monday, September 7, 2015

11 a.m. - Lunch Available

Noon - **Autumn In The Ozarks Sale**

SALE HEADQUARTERS

Drury Inn & Suites - (417) 863-8400

2715 N. Glenstone - Springfield, Missouri

Econo Lodge - (417) 864-3565

2611 N. Glenstone - Springfield, Missouri

AIR SERVICE: Springfield is served by many major airlines.

LOADING: No cattle will be loaded until the conclusion of the sale.

TRUCKING: Reliable truckers will be on hand sale day. Check with the sale management if you need assistance.

HEALTH: All cattle will be accompanied with proper health certificates for immediate shipment.

INSURANCE: Will be available at the settlement desk.

Buyers unable to attend the sale may send their bids to the sale management, auctioneer or the special representatives. These bids will be handled in a confidential manner.

The EPDs on all cattle are from the Spring 2014 Sire Summary.

TERMS & CONDITIONS: A standard set of terms and conditions available at the settlement desk.

SALE MANAGED BY:



Clifford C. Mitchell

405/246-6324

E-mail: ccmosu@msn.com

~ Local Points of Interest ~

Bass Pro Shop - One of Missouri's #1 Attractions

Springfield Cardinals

PFI - Missouri's Largest Western Store

Wilson's Creek National Battlefield & Museum

Missouri Sports Hall of Fame

Branson, Missouri - Only 45 minutes away

SALE DAY PHONES

(405) 246-6324 • (417) 865-2163

Auctioneer

Rob Nord • (217) 935-3245

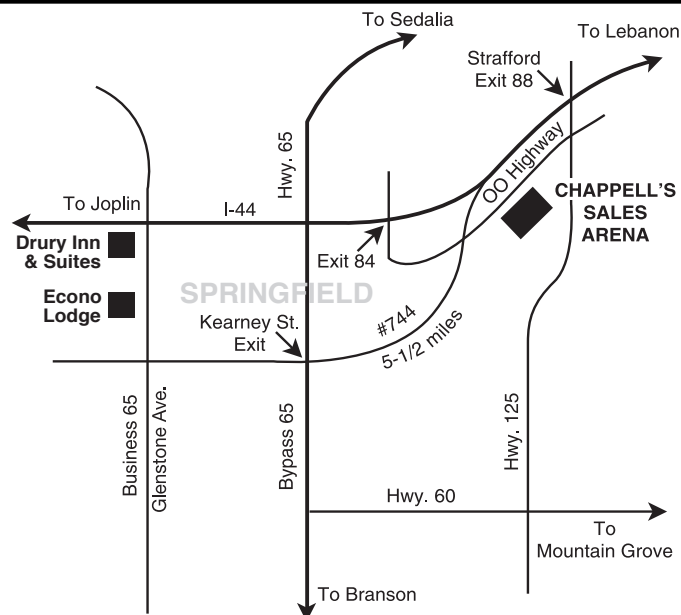
Special Representatives

David Hobbs, *The Charolais Journal*

(816) 464-5977 - (913) 515-1215

Tim Lackey, *The Missouri Cattleman* - 660-676-2193

Harlan Powers, *Special Assignment* - 217-358-4414



COWS CALF PAIRS



Lot 1 - DC MS Pomona Kojack C902P



DC MS Pomona Kojack C902P

2-27-09 • Polled • F1117284

BALDRIDGE KOJACK 29K
BALDRIDGE FASTTRACK 82F
BALDRIDGE ELVIRA 95H

PF 809CR P ET
DC MS POMONA MAC C520P
MS POMONA POWER T C513P

LT UNLIMITED EASE 9108
BALDRIDGE SWEETHEART 53D
VCR SIR DUKE 914 PLD
BALDRIDGE ELVIRA 81D
WCR SIR FAB MAC 809
JWK CAROLINE G003 ET
WCR POWER T 2375 POLLED
DC MS UNLTD POMONA C214P

EPD/DIR: 8.4, -2.1, 23, 40, 15, 4.8, 26

1A - Polled bull calf born 3/4/15, sired by COOLEY ROYCE 1107T39. This stout herd bull prospect has EPDs of 3.0, 0.1, 27, 57, 19, 1.1, 32.

- This cow has calving ease, looks, maternal and is backed by generations of good genetics.
- Due 2/27/16 to LT LEDGER 0332 P.

• CORMAN CHAROLAIS •



TCF Miss Woodshed 2409

11-1-09 • Polled • F1116344

PF SMOKE HOUSE 1143 P ET
PF WOOD SHED 4132 ET
GS ELI MAE 8029 P ET

BALDRIDGE FASTTRACK 82F
GP MS TUNDRA M32
GP MS TUNDRA K101

LHD CIGAR E46
VCR MISS DUCHESS 351 PLD
ASC ELIMINATOR 032
DOUBLE D GERMAINE 4515ET
LT UNLIMITED EASE 9108
BALSRIDGE SWEETHEART 53D
JWK IMPRESSIVE D040 ET
BF MISS TUNDRA PLD 5016ET

EPD/PE: 5.4, 0.0, 21, 31, 6, 4.2, 17

3A - Polled heifer calf born 3/15/15, sired by WH GUNSLINGER 106 PLD. This cow prospect EPDs are 5.8, 0.1, 18, 25, 7, 4.8, 16.

- She has some of the breed greats in her pedigree and traces to the GERMAINE female. She does everything right.
- Exposed to WH GUNSLINGER 106 PLD, 5/15/15 to sale day.

• THURNAU CHAROLAIS •



DC MS Pomona Program C216P

4-2-12 • Polled • F1172020

HBR PROGRAM 218 P
DC POMONA LONG PROGRAM C931P
DC MS POMONA MAC C620 P

PLT SIR DUKES FLASH 5527
DC MS POMONA FLASH C202P
DC MS POMONA STOLI C004P

VCR SIR DUKE 914 PLD
HBR LADY PROGRAM 891 P
PF 809CR P ET
DC POMONA PERFORMER 943
HCR FLASH 5074 POLLED
VCR MISS DUCHESS 552 PLD
KC STOLICHNAYA H016 P ET
DC POMONA PERFORMER 943

EPD/DIR: 0.4, 1.5, 29, 44, 6, -0.4, 21

5A - Polled bull calf born 3/6/15, BW 89, sired by LT LEDGER 0332 P. This is a good calf. His EPDs are 5.1, 0.1, 31, 59, 12, 3.9, 28.

- A good young three-year-old from the Corman program. She will be an asset for many years to come and is going to calve right on schedule.
- Due 3/3/16 to LT LEDGER 0332 P.

• CORMAN CHAROLAIS •



RCR Traditions 6701 P

9-5-06 • Polled • F1063620

WCR SIR TRADITION 066
WCR SIR TRADITION 4402 P
IDEAL 809 45 OF 25

ASC ELIMINATOR 032
RCR 8347 POLLED
RCR FLASHIE POLLED 6262

ABC WIENKS TRADITION
WCR MISS CENTURY MAC 126
WCR SIR FAB MAC 809
IDEAL D'ARTAGAN 25OF 08
HCR EXONERATOR POLLED
MISS HCR MAC 2308
HCR FLASH 5074 POLLED
RCR MISSY 4176 PLD

EPD/DIR: 3.2, 0.2, 17, 40, 11, 5.7, 20

2A - Polled bull calf born 2/27/15 sired by VPI FREE LUNCH 708 T. This stout prospect has EPDs of 5.7, -1.2, 27, 53, 7, 5.3, 21.

- She is a full sister to Ricketts herd sire NED and her daughter was one of the high sellers in the Renaissance. Another daughter sells as Lot 39.
- She is rebred to VPI FREE LUNCH 708 T on 6/3/15.

• STEPHANIE MOTTAZ •



VCC Mable 865

5-7-08 • Polled • F1099889

ABC LANCERO DAN
ABC JOYANTE DAN
ABC UNA F219

4-L UNLIMITED YL13 POLLED
SF MISS UNLIMITED 876
SF PERFORMER'S CELEBRITY

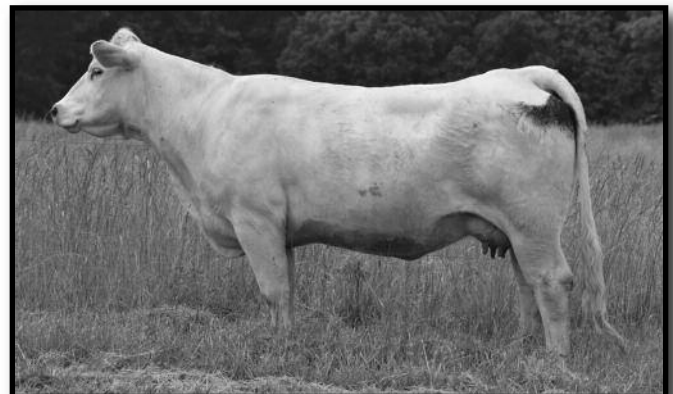
ABC DAN
ABC UNA F151
SCM ULTRA NACHA C167
ABC FAUSTIN DANA
BCR POLLED UNLIMITED 003
HAW CHARISSA P465 POLLED
SF EDUCATOR'S PERFORMER
SF MISS CELEBRITY 531

EPD/PE: -1.7, 1.1, 12, 19, 10, 0.2, 16

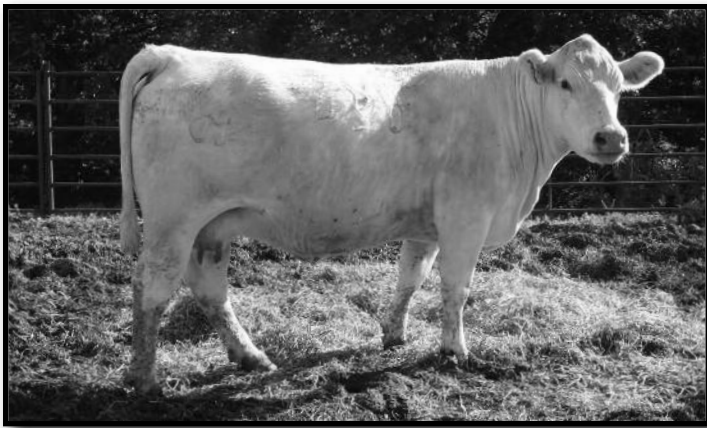
4A - Polled bull calf born 3/17/15, BW 85, sired by VCC Schurrtop 206. This outcross sire prospect EPDs are -6.1, 3.4, 27, 45, 5, -1.1, 18.

- This female is an outcross to most of today's popular bloodlines. She would be a versatile breeding piece.
- Al'd 6/15/15 to the popular FIREWATER, son SUMMIT HDF SUPREME X01.

• VOLLBORN CATTLE CO. •



Lot 5 - DC MS Pomona Program C216P



Lot 6 - MDL Miss Prime Cut 024



MDL Miss Prime Cut 024

2-19-10 • Polled • FI124044

WCR PRIME CUT 764 PLD
WCR SIR PRIMECUT 7183 P
 WCR MS TRADITION 3198 P

JWK IMPRESSIVE D040 ET
 WCR MISS EASE 4314
 WCR SIR TRADITION 066
 WAP AMANDA 624

RC WESTERN JOURNEY 6109 PLD
MDL MISS WESTERN 82
 MDL MISS RANCHER 69

RC NAY 311 PLD
 RC MS SIGNATURE 3315 PLD
 HCR RANCHER 2088 PLLED
 NF MISS BEAU N359 PLD

EPD/DIR: 0.6, -0.2, 15, 35, 2, 1.9, 9

6A - Polled heifer calf born 3/18/15, sired by OW DOMINION 2149 P/S. This fancy lady has EPDs of -1.3, 0.9, 28, 57, 8, 1.5, 22.

- This is a very productive female with her prime productions years still ahead of her. MDL focuses on practical production traits.
- Safe in calf to OW DOMINION 2149 P/S, exposed from 4/27/15 to 6/29/15.

• MDL FARMS •



VCC Miss Bluegrass 100

2-20-11 • Polled • FI138960

LT ASSERTION 1277 P
LT BLUEGRASS 4017 P
 LT PEARL'S BREEZE 2236 P

EATONS ASSERT 9171
 LT ALLI'S CLASS 9140 P
 LT WYOMING WIND 4020 PLD
 LT UNLIMITED PEARL 7053P

JWK IMPRESSIVE D040 ET
JCR MS IMPRESSIVE 223 P
 JCR MISS EASE 9006 PET

WCR SIR FA MAC 2244
 HBR LADY LIZ 721 P
 SKYMONT EASE 2078
 WCR MISS TRADITION 3450

EPD/PE: 6.5, -0.2, 24, 48, 5, 6.5, 17

7A - Polled heifer calf born 3/22/15, sired by WC HOODOO SANDPOINT 2013. This is a fancy heifer. Her EPDs are 2.8, 0.5, 16, 30, 2, 4.0, 10.

- This BLUEGRASS daughter is in her prime, a young cow with a very maternally oriented pedigree.
- Exposed to WC HOODOO SANDPOINT 2013, 7/20/15 to sale day.

• VOLLBORN CATTLE CO. •



KC Miss Impressed 0154P

2-26-10 • Polled • FI121219

PF IMPRESSED 620 P ET
PF EL DUKE 9021 P ET
 VCR MISS DUCHESS 351 PLD

JWK IMPRESSIVE D040 ET
 MISS KC CROCUS 904 POLL
 VCR SIR DUKE 914 PLD
 VCR MISS MAC'S PERFECTION

WCR SIR DAKOTA WIND 712P
KC MISS DAKOTA WIND 1454
 KC MISS PAUL 254

LT WYOMING WIND 4020 PLD
 WCR MISS T 9406 ET
 WCR SIR DUKE 9046
 WCR MISS PAUL 254

EPD/DIR: -1.3, 3.5, 26, 36, 16, -1.5, 29

9A - Polled bull calf born 4/12/15, BW 96, sired by the \$75,000 LT BLUE MOUNTAIN 1041 PLD. This performance prospect's EPDs are -4.2, 3.6, 41, 70, 15, 0, 35.

- This female is in the prime of her life and has the DUCHESS 351 influence in her pedigree. 351 was a very prolific donor and has generated many dollars.
- Rebred to the outcross Denver Champion NS/SCF SEVEN & 7 1309 PLD.

• WILD INDIAN ACRES •



FH MS 104 Nancy 201 P

1-21-12 • Polled • FI163556

WCR SIR TRADITION 066
M6 GRID MAKER 104 PET
 VCR MISS MAC IV 317

WCR SIR TRADITION 4402
 IDEAL 809 45 OF 25
 WCR SIR FA MAC 2244
 VCR MISS DUCHESS 113 PLD

LT WYOMING WIND 4020 PLD
THREE TREES NANCY 2446ET
 THREE TREES NANCY 8121ET

SCHURRTOP 5627
 LT CHAP'S LADY 2170P
 SKYMONT EASE 2078
 WCR MISS MAC IV 5138 ET

EPD/DIR: 5.9, 0.0, 27, 56, 11, 2.7, 24

10A - Polled bull calf born 4/13/15, BW 84, sired by FH HARDENED STEEL 320 P. His EPDs are 5.6, 0.3, 31, 58, 8, 3.9, 23.

- Very nice three-year-old daughter of GRID MAKER out of a full sister to 0383. What a genetic combination.

• Rebred information will be announced sale day.

• FOX HOLLOW FARMS •



Lot 11A



DC MS Pomona Duke Silver C014P

3-24-10 • Polled • FI133635

VCR SIR DUKE 914 PLD
DC POMONA DUKE C702P
 DC MS POMONA TRACK C503P

WCR SIR DUKE 761
 WCR MISS MAC IV 534
 BALDRIDGE FASTTRACK 82F
 DC MS POMONA FLASH C203P

\$S MONTANA SILVER
JB MS POMONA SILVER C709P
 DC MS POMONA PAUL 114P

\$ CECILE COBB
 \$ STAGE'S MISS DC BAR
 POMONA PAUL 109/9 ET
 MS POMONA RANGER C705P

EPD/DIR: 5.6, -0.9, 25, 45, 2, 4.3, 14

11A - Polled heifer calf born 3/20/15, sired by DC 15G POMONA GRIDMAKER C223P. This calf has a real good look. Her EPDs are 5.7, -0.1, 28, 51, 11, 3.5, 25.

- She combines some of the more prominent female sires with 914 and MONTANA SILVER.
- Due 3/3/16 to LT LEDGER 0332 P.

• CORMAN CHAROLAIS •



JDJ Maximo A18

12

Summit Farms MS Vanna X04

9-5-10 • Polled • EF1136289

WCR SIR TRADITION 066
M6 GRID MAKER 104 PET
 VCR MISS MAC IV 317

LT WYOMING WIND 4020 PLD
THREE TREES VANNA 0608ET
 JWK VANESSA D029 ET

WCR SIR TRADITION 4402
 IDEAL 809 45 OF 25
 WCR SIR FA MAC 2244
 VCR MISS DUCHESS 113 PLD
 SCHURRTOP 5627
 LT CHAP'S LADY 2170P
 WCR SIR FA MAC 2244
 HBR LADY PERFORMER 934 P

EPD/PE: 7.3, 0.5, 26, 48, 13, 6.8, 26

12A - Polled bull calf born 3/27/15 sired by LT LEDGER 0332 P. He has the pedigree of a future herd sire. His EPDs are 8.6, -0.5, 30, 61, 15, 7.5, 30.

- Sired by the female sire GRID MAKER and traces to D029, a five-year-old that could be front pasture material.
- AI'd to JDJ MAXIMO A18. Exposed to RLL RIVERDALE P172 on 6/1/15, then to HF ROCKET MAN BR 50 on 7/15/15.

• HALE FARMS •

13

Weaver MS Clara 0832

1-15-08 • Dehorned • FI090974

WCR SIR DUKE 761
VCR SIR DUKE 914 PLD
 WCR MISS MAC IV 534

\$\$ MONTANA SILVER
WEAVERS MS CLARA 0432
 WEAVERS HAYLEY

BR DUKE 261
 WCR MISS TRADITION 8335
 WCR SIR FA MAC 2244
 MISS DOC 509
 \$ CECILE COBB
 \$ STAGE'S MISS DC BAR
 LT WYOMING WIND 4020 PLD
 WEAVERS MISS SAMMY 9509

EPD/DIR: 4.7, 1.2, 34, 55, 15, 3.6, 32

13A - Polled bull calf born 4/12/15 sired by \$22,000 M6 NEW PROMISE 103 P. He is stout and has great numbers. His EPDs are 7.2, 0.3, 45, 68, 6, 6.0, 29.

- This is an own daughter of 914 and they are rare these days. Her growth EPDs, Milk and TM are all in the top 20 percent of the breed.
- AI'd 5/7/15 to JDJ MAXIMO A18. Exposed to RIVERDALE P172 6/1/15 and to HF ROCKET MAN BR50 7/15/15

• HALE FARMS •

14

VCC Lady Mack I08

10-2-11 • Polled • FI153409

SC SHADOWBROOK 449 ET
HBR SHADOWBROOK 725 P
 HBR LADY MACK 53 P

WCR SIR DUKE H024 P
VCC MARY ANN 409
 SF MISS UNLIMITED 876

LT POLLED VALUE 9089
 JWK TIARA H116
 HBR BIG MACK 797 P
 HBR LADY MAGNUM 665 P ET
 WCR SIR DUKE 9046
 JWK TONISHA F099 ET
 4-L UNLIMITED YL13 POLLED
 SF PERFORMER'S CELEBRITY

EPD/PE: 3.6, 0.7, 29, 50, 10, 5.2, 24

14A - Polled bull calf born 4/19/15, BW 75, sired by WC HOODOO SANDPOINT 2013. His EPDs are 1.4, 1.0, 19, 31, 5, 3.3, 14.

- This young brood matron has Wien and Rogers genetics. Her service sire is full HOO DOO genetics.
- Exposed to WC HOODOO SANDPOINT 2013, 7/20/15 to sale day.

• VOLLBORN CATTLE CO. •

15

SRC MS NO1 Blue V94 ET

5-2-09 • Polled • EF116728

LT ASSERTION 1277 P
LT BLUEGRASS 4017 P
 LT PEARL'S BREEZE 2236 P

LHD CIGAR E46
RCR MS COMMANDER N01 PET
 JD MS COMMANDER B309

EATONS ASSERT 9171
 LT ALLI'S CLASS 9140 P
 LT WYOMING WIND 4020 PLD
 LT UNLIMITED PEARL 7053P
 LHD MR PERFECT Y416
 LHD MS CLASSIC BELL X613
 TA 854 SHOW COMMANDER
 LHD MS CLASSIC ALI W177

EPD/PE: 5.2, -0.3, 25, 43, 10, 6.1, 22

15A - Polled bull calf born 5/18/15 sired by MULTIPLE TRAIT LEADER M6 NEW STANDARD 842 P. NEW STANDARD sons topped a lot of bull sales last spring and he's a good one. His EPDs are 7.7, -0.5, 37, 72, 11, 6.5, 29.

- She is a BLUEGRASS daughter that traces to the legendary B309 donor.
- Exposed to RLL RIVERDALE P172 on 6/1/15, then to HF ROCKET MAN BR 50 on 7/15/15.

• HALE FARMS •

FIRST CALF HEIFERS

16

FH MS I04 Supreme 30I P

2-4-13 • Polled • FI163571

WCR SIR TRADITION 066
M6 GRID MAKER 104 PET
 VCR MISS MAC IV 317

FH-RRR SEQUOIA 148
FH MISS SUPREME 101 P
 DC MISS CIGAR 807 P

WCR SIR TRADITION 4402
 IDEAL 809 45 OF 25
 WCR SIR FA MAC 2244
 VCR MISS DUCHESS 113 PLD
 SILVER CREEK HIGH-RISE
 MISS HCR MAC 1303 POLLED
 DC CIGAR 3331 PLD
 DC MISS JUPITER 1099

EPD/BK: 1.9, 1.5, 21, 41, 10, 6.0, 20

16A - Polled bull calf born 2/18/15, sired by EC IRON MAN 2027 P. A good prospect, his EPDs are 4.6, 0.4, 34, 60, 9, 4.1, 26.

- First calf daughter of the female producer GRID MAKER. She will produce lots of dollars worth of offspring.
- Rebred information will be announced sale day.

• FOX HOLLOW FARMS •

17

BWB Miss No Doubt 308

3-8-13 • Polled • FI180720

M6 GRID MAKER 104 PET
EC NO DOUBT 2022 P
 EC LADY DUKE 2022 P

MR MORRISON 307 POLLED
MISS IMPRESS APRIL
 MORRISON'S MS IMPRESS 209

WCR SIR TRADITION 066
 VCR MISS MAC IV 317
 VCR SIR DUKE 914 PLD
 JES MS ADVANTAGE C74
 MORRISON'S HILLCREST MAC
 MS MORRISON 036 POLLED
 JWK IMPRESSIVE D040 ET
 MISS MORRISON 632 POLLED

EPD/PE: 4.8, 0.4, 27, 51, 3, 1.1, 17

17A - Polled heifer calf born 4/3/15, sired by HC SUGAR DADDY 405 PLD. Another nice heifer calf. Her EPDs are 3.1, 0.9, 25, 44, 5, 3.6, 17.

- A young two-year-old sired by NO DOUBT. His daughters are making nice cows.
- Exposed to KTB SMOKESTER'S INFLUENCE, 6/25/15 to sale day.

• ROCKY RIDGE CHAROLAIS •

18**Whites Polled Miss 761 Z401 P****4-1-13 • Polled • FI176047**

BR DUKE 261
WCR SIR DUKE 761
 WCR MISS TRADITION 8335

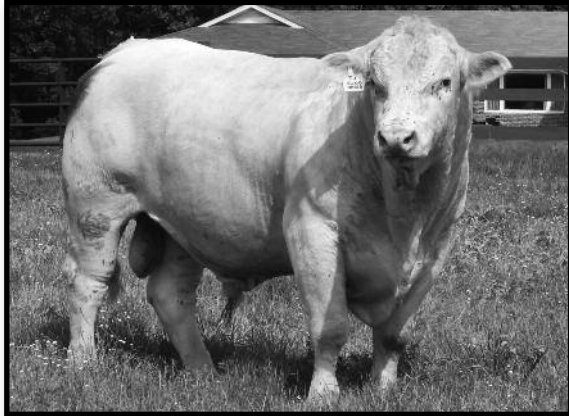
M6 RIGHT NOW 5239 PLD ET
G.P. WHITE X047
 FINKS LEILANI 493525389108

BR DUKE 295
 BR ANN 14
 ABC WIENKS TRADITION
 WCR MISS MAC 141
 M6 GRID MAKER 104 PET
 M6 MS E46'S DUKE 248 PET
 LT UNLIMITED EASE 9108
 FINKS LEILANI 2538945 BUD ET

EPD/BK: 4.7, -0.1, 30, 50, 6, 1.2, 21

18A - Polled heifer calf born 4/12/15 by LT GOLD BLEND 0315. This young lady has all the right genetics, her EPDs are 5.4, -0.8, 29, 46, 6, 2.7, 20.

- She is a 761 daughter that traces to the RIGHT NOW daughter that may be the best at Whites. It's her first calf and it was hard for them to part with her.
- Due 3/8/16 to LT GOLD BLEND 0315.

• **WHITE CHAROLAIS** •**LT Gold Blend 0315 P****19****Whites Miss Surprise Z428 P****4-28-13 • Horned • EF1176665**

4-L UNLIMITED YL06 PLD
LT UNLIMITED DUKE 1172 P
 LT PRAIRIE MAIDEN 8050

WCR SIR DUKE 761
M6 761 SUPREME S11
 M6 MS E46 SUPREME 4168ET

EPD/BK: -0.2, 1.9, 30, 46, 18, 1.7, 33

19A - Polled heifer calf born 4/12/15 sired by LT LEDGER 0332 P. This calf has all the right stuff for a tremendous female. Her EPDs are 4.8, 0.3, 32, 60, 18, 5.0, 34.

- This female comes out of an outstanding WCR SIR DUKE 761 daughter and sired by LT UNLIMITED DUKE 1172.
- Will be rebred to LT LEDGER 0332.

• **WHITE CHAROLAIS** •**20****Whites Miss Surprise Z430 P****4-30-13 • Polled • EF1176666**

4-L UNLIMITED YL06 PLD
LT UNLIMITED DUKE 1172 P
 LT PRAIRIE MAIDEN 8050

WCR SIR DUKE 761
M6 761 SUPREME S11
 M6 MS E46 SUPREME 4168ET

EPD/BK: -0.2, 1.8, 30, 46, 18, 1.7, 33

20A - Polled heifer calf born 6/7/15, sired by LT GOLD BLEND 0315 P. This fancy heifer has EPDs of 3.2, 0.2, 29, 44, 12, 3.0, 26.

- Flush sister to Lot 19, what a pair of females. These flush mates are the right kind and would be a great addition to any herd.

• **WHITE CHAROLAIS** •**BRED HEIFERS****21****WC Miss Golden Girl B409 P****4-9-14 • Polled • FI189012**

LT EASY BLEND 5125 PLD
LT GOLD BLEND 0315 P
 LT MARIA 4904 ET PLD

LT UNLIMITED EASE 9108
LT BRENDA'S EASE 0105 P
 LT BRENDA 8018 PLD

LT UNLIMITED EASE 9108
 LT BRENDA 1014 PLD
 WCR SIR DUKE 0267
 LT UNLIMITED MAIDEN 1131

BCR POLLED UNLIMITED 003
 PP MISS SHANDY 214 R194
 LT SILVER DISTANCE 5342P
 LT BRENDA 6185 PLD

EPD/BK: 8.1, -2.2, 22, 34, 11, 2.3, 22

- Due 3/5/16 to LT LEDGER 0332 P. Projected EPDs are 9.0, -1.8, 28, 54, 14, 5.3, 28.
- This is a daughter of a powerful UNLIMITED EASE cow that has never missed; she produces the front pasture kind.
- She is in the top 15 percent of the breed for calving ease and birth weight.

• **WHITE CHAROLAIS** •**22****WC Miss Golden Girl B414 P****4-14-14 • Polled • FI189016**

LT EASY BLEND 5125 PLD
LT GOLD BLEND 0315 P
 LT MARIA 4904 ET PLD

NF POLLED NEMES 5013
POLLED MISS ALLEGAN V615P
 POLLED CHAMPAIGN LADY

EPD/BK: 4.4, -0.1, 25, 36, 2, 4.8, 14

- Due 3/5/16 to LT LEDGER 0332 P. Projected EPDs are 7.1, -0.8, 29, 55, 10, 6.5, 24.
- LEDGER is siring sale toppers all across the country. This female could add a lot of value to the herd.
- A nicely patterned heifer that comes out of a cow sired by a Nord Charolais bull that produced some heavy milking females.

• **WHITE CHAROLAIS** •**23****WC Miss Golden Girl B519 P****5-19-14 • Polled • FI190397**

LT EASY BLEND 5125 PLD
LT GOLD BLEND 0315 P
 LT MARLA 4904 ET PLD

WINN MANS LANZA 610S
LT PRAISE 1496 P ET
 LT WYOMING BREEZE 7188 P

LT UNLIMITED EASE 9108
 LT BRENDA 1014 PLD
 WCR SIR DUKE 0267
 LT UNLIMITED MAIDEN 1131

SPARROWS DURANGO 585P
 WINN MAN MERIT 036K
 LT WYOMING WIND 4020 PLD
 LT AIREY 4055 P

EPD/BK: 5.0, -0.5, 29, 51, 4, 4.8, 19

- All'd to LT LEDGER 0332 P on 8/8/15, projected EPDs 7.4, -1.0, 31, 62, 11, 6.5, 27.
- Powerful heifer that would be a welcome addition to any replacement pen.
- Her dam is a good milking daughter of WINN MANS LANZA with a strong LT WYOMING WIND influence on the maternal side.

• **WHITE CHAROLAIS** •**24****WC Miss Golden Girl TW B331A P****3-31-14 • Polled • FI185617**

LT EASY BLEND 5125 PLD
LT GOLD BLEND 0315 P
 LT MARIA 4904 ET PLD

M6 RIGHT NOW 5239 PLD ET
G.P. WHITE X039
 FINKS MISS 4939 2263 EB

EPD/BK: 7.6, -2.0, 27, 45, 5, 5.8, 18

- Due 3/5/16 to LT LEDGER 0332 P. Projected EPDs are 8.7, -1.7, 30, 59, 11, 7.0, 26.
- This might possibly be the pick of our 2014 LT GOLD BLEND heifers. She is stout yet maintains a very feminine look.
- A nice blend of LT and M6 genetics and her dam is the best producing cow in our herd.

• **WHITE CHAROLAIS** •

25

MLD MS Firebreak 47 Pld

2-8-14 • Polled • FI 186556

TR MR FIRE WATER 5792RET
HPF CM FIREBREAK 104
DA MS MARION 820 P ET

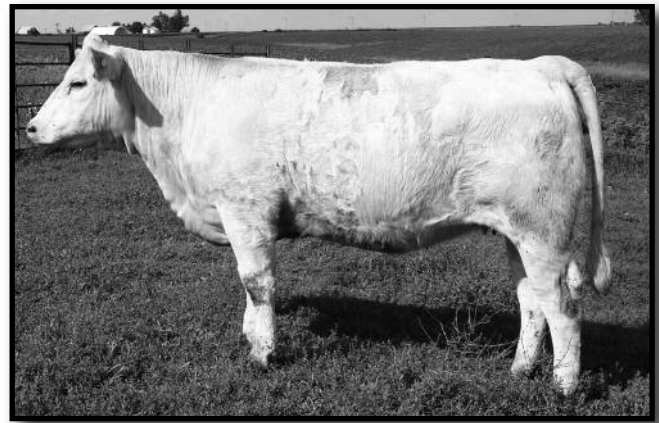
TLC GRAND SLAM 7010P
MDL MISS GRAND SLAM 015
MDL MISS WESTERN 812

THOMAS OAHE WIND 0772ET P
THOMAS SWISSER SWEET 1764 ET
KEYS STINGER 261 P
OW MISS MARION 0025 ET
M6 GRID MAKER 104 PET
TLC MISS LIBERTY 1177 P
RC WESTERN JOURNEY 6109 PLD
TLC NEW DESIGN 4095P

EPD/BK: -0.4, -0.3, 20, 35, 12, 0.9, 22

- Pasture exposed to WC RIGHT DISTANCE 4047 from 4/27/15 to 6/29/15 and safe in calf. Projected EPDs 3.8, -0.9, 24, 43, 16, 1.4, 28.
- This is a really stout brood cow prospect that combines the blue ribbon genetics of FIREWATER and the MARION family.
- FIREBREAK did well on the tanbark and his daughters highlight the replacement pen at MDL Farms.

• MDL FARMS •



Lot 25 - MDL MS Firebreak 47 Pld

26

MLD MS Firebreak 43 P/S

2-2-14 • Scurs • FI 186558

TR MR FIRE WATER 5792RET
HPF CM FIREBREAK 104
DA MS MARION 820 P ET

RC WESTERN JOURNEY 6109 PLD
MDL MISS WESTERN JOURNEY 020
WCR MISS DUKE 1391 P/S

THOMAS OAHE WIND 0772ET P
THOMAS SWISSER SWEET 1764 ET
KEYS STINGER 261 P
OW MISS MARION 0025 ET
RC NAY 311 PLD
RC MS SIGNATURE 3315 PLD
WCR SIR DUKE H096 P
WCR MISS L06 II 7343 P

EPD/BK: -3.4, 1.4, 20, 35, 12, -0.5, 22

- Exposed to WC RIGHT DISTANCE 4047 from 4/27/15 to 6/29/15, safe in calf, projected EPDs 2.3, -0.1, 24, 43, 16, 0.7, 28.
- This gal is fancy and has the brood cow look. FIREBREAK daughters are very versatile breeding pieces.
- The service sire of these MDL heifers combines breed leaders LONG DISTANCE, LEDGER and J139.

• MDL FARMS •



Lot 26 - MDL MS Firebreak 43 P/S

27

RCR Miss Ruby 3997

4-22-13 • Polled • FI 172776

LT EASY BLEND 5125 PLD
RCR TRADITIONS BLEND 0904 P
RCR JAN 5664 P

BALDRIDGE KOJACK 29K
RCR KOJACK'S BEV 5632 P
RCR WINDY RAE 9386 PLD

LT UNLIMITED EASE 9108
LT BRENDA 1014 PLD
WCR SIR TRADITION 066
RCR JACKIE 9410 PLD
BALDRIDGE FASTTRACK 82F
BALDRIDGE ELVIRA 95H
LT WYOMING WIND 4020 PLD
RCR RAE LEE 1045

EPD/BK: 6.5, -0.7, 22, 38, 3, 5.5, 14

- Due to LT LEDGER 0332 P around sale day. Projected EPDs are 9.8, -1.4, 33, 73, 17, 8.2, 34.
- Another good one from one of the sale's original consignors. This female is backed by strong Ricketts breeding and some of the breed's best genetics.
- The mating to LEDGER just adds value.

• RICKETTS CHAROLAIS RANCH •

29

BWB Sugar Dady's Hope I I I 3

11-12-13 • Polled • FI 184625

LT WYOMING WIND 4020 PLD
HC SUGAR DADDY 405 PLD
HC SUGAR 1848 POLLED

EATONS BULLSEYE 3033 TW
BULLSEYE'S IMPRESSIVE BROOKE
RLL MS RIVERDALE E 224

SCHURRTOP 5627
LT CHAP'S LADY 2170P
BALDRIDGE ELIMINATOR 87E
HC PERFECT FLASH 848
EATONS BEYOND 7243
EATONS SABRA 1533
JWK IMPRESSIVE D040 ET
LHD MS CIGAR H18

EPD/PE: 1.9, 1.2, 19, 39, 8, 7.0, 17

- Safe in calf to LT BLUEGRASS 4017 P due March 16, 2016. Projected EPDs are 5.5, -0.4, 20, 42, 7, 8.1, 17.
- Halter broke and very gentle. She has been shown all summer and been a winner.
- She bred her first time AI, a sure sign of fertility and she's bred to calving ease leader BLUEGRASS.

• ROCKY RIDGE CHAROLAIS •

28

G4 MS Stealth 304 ET

9-2-13 • Polled • EF 178759

TR MR FIRE WATER 5792RET
THOMAS OAHE WIND 0772ET P
THOMAS SWISSER SWEET 1764 ET

DR STEALTH 574
M&M MS STEALTH 7515 PLD ET
M&M MS WYO WIND 4623 PLD ET

LT WYOMING WIND 4020 PLD
THOMAS MS CAMELOT 5646
LHD CIGAR E46
THOMAS MS BONANZA 8698
HOODOO SLASHER 1144
DR ALEXIS 412 ET
LT WYOMING WIND 4020 PLD
VCR MISS DUCHESS 433

EPD/PE: -7.0, 2.3, 30, 50, 16, -4.4, 31

- Due to a Red Angus bull right around sale time. The Charolais/Red Angus cross is a very popular hybrid and fits the current industry.
- Sired by the legendary FIREWATER and out of a top of the line donor cow.
- This female has a definite look and could be an asset to any herd.

• G4 RANCH •



LT Bluegrass 4017 P

BULLS



Lot 30 - RCR Fieldrep TO Lunch 4057

30

RCR Fieldrep TO Lunch 4057

9-9-14 • Polled • M858892

VPI FREE LUNCH 708T
VPI MISS DUCHESS 404 P

RCR JEWEL 9846 P
SR/NC FIELD REP 2158 P ET
RCR MISS TRACKY 6683 P

EPD/PE: 7.8, -2.7, 26, 48, 10, 5.7, 23

- BW 67, WW 748
- This is a good calving ease herd sire prospect with a nice spread from birth to weaning.
- He combines genetics of two well known bulls, FREE LUNCH and FIELD REP. Designing calving ease and growth into one package.

• RICKETTS CHAROLAIS RANCH •

31

BWB Sugar Daddy's Iceman 314

3-9-14 • Polled • M852115

HC SUGAR DADDY 405 PLD
LT WYOMING WIND 4020 PLD
HC SUGAR 1848 POLLED

RLM MS RIVERDALE E224
JWK IMPRESSIVE D040 ET
LHD MS CIGAR H18

EPD/PE: 1.2, 1.8, 22, 38, 6, 5.4, 17

- He is halter broke and very gentle.
- Breed greats CIGAR, WIND and D040 are all in his pedigree.

• ROCKY RIDGE CHAROLAIS •

32

TCF MR Gunslinger 314

3-21-14 • Polled • M844707

WH GUNSLINGER 106 PLD
BIG CREEK INDIAN OUTLAW 932 P
WH BINGO 5022 PLD

TCF MISS BUD 1704
R & R MR BUD JR P
CC KUPI 232P

EPD/PE: 2.4, 1.7, 18, 26, 9, 5.4, 18

- This bull had a 75 pound birth weight and grew out well.
- An older bull ready to go to work.

• THURNAU CHAROLAIS •

33

PC Pleasant Hope 7914

7-9-14 • Polled • M854672

SVF SMOKE SIGNAL 801 ET
JDJ SMOKESTER J1377 P ET
RLM LADY PERFECT 5188 ET

SVF GRIDMAKER HOLLY 902
M6 GRID MAKER 104 PET
GPN MISS HOLLY 3N9 P

EPD/PE: 3.1, 0.7, 29, 50, 17, 1.3, 31

- BW 80, WW 826, YW 1279
- This bull combines SMOKESTER and GRID MAKER genetics. He is herd sire material.
- Look at the spread from birth to weaning. His calves will grow and perform.

• PARRISH CHAROLAIS •



Lot 33 - PC Pleasant Hope 7914

BRED COWS

34

VCC Lady Mack 107

9-25-11 • Polled • F1153408

HBR SHADOWBROOK 725 P
SC SHADOWBROOK 449 ET
HBR LADY MACK 53 P

ABC LOTHARIA DANA 1MGM
ABC LOTHARIO
ABC UNA F219

EPD/PE: 0.5, 1.5, 28, 41, 6, 1.8, 20

- Due 10/6/15 to TR FIREWATER 5792RET, projected EPDs are -5.6, 2.3, 29, 46, 14, -3.4, 28.
- A young four-year-old due to the show sire FIREWATER, this could produce your next show heifer.
- Outcross Cobb genetics on the bottom side of her pedigree.

• VOLLBORN CATTLE CO. •



TR Firewater R5792ET



Big Creek Game Changer 192 P ET

35

WH Fancy Lady

8-8-09 • Polled • FI 119624

WH GRAHAM 057
WH GRAHAM'S ADVANTAGE 7025
 THREE TREES NANCY 2234

BIG CREEK HELL'S ANGEL P
WH FANCY 7098 PLD.
 WH LADY DIANE 5092 PLD.

WH AUGUST 7046 PLD
 WH BETHANY 7051 PLD
 WCR PRIME CUT 764 PLD
 WCR MISS L06 9407 ET
 LT WYOMING WIND 4020 PLD
 BIG CREEK ANGEL P
 DA TRUE VALUE 105 P ET
 WH GENNIE 3105 PLD.

EPD/DIR: 6.5, 0.3, 34, 57, -1, 7.8, 16

- Due 9/15/15 to BIG CREEK GAME CHANGER 192 P ET, projected EPDs are 3.3, 1.0, 29, 47, 2, 2.5, 16.
- GAME CHANGER sired a \$32,000 Denver division winner in his first calf crop. His calves are correct.
- Her growth EPDs are in the top 20 percent of the breed.

• **WINDY HILL CHAROLAIS** •

36

Hales MS Rapidgirl 270 ET

8-24-12 • Polled • EF 1165223

TR MR FIRE WATER 5792RET
TR PZC RAPID FIRE 9775 ET
 THOMAS MS IMPRESSIVE 0641

LT WYOMING WIND 4020 PLD
THREE TREES VANESSA 3849ET
 JWK VANESSA D029 ET

THOMAS OAHE WIND 0772ET P
 THOMAS SWISSER SWEET 1764 ET
 JWK IMPRESSIVE D040 ET
 BCI MISS VERYLIMIT 6033P

SCHURRTOP 5627
 LT CHAP'S LADY 2170P
 WCR SIR FA MAC 2244
 HBR LADY PERFORMER 934 P

EPD/PE: 3.2, 1.1, 34, 56, 5, 3.2, 22

- Due in November to BIG CREEK GAME CHANGER 192 P ET, projected EPDs are 1.6, 1.4, 29, 46, 5, 0.2, 19.
- GAME CHANGER calves will compete on the tanbark. This could be an exciting mating to a RAPID FIRE X D029 daughter.
- Only a three-year-old, she has her whole life in front of her.

• **DAVIS CHAROLAIS** •

37

PR MS Top Mac 825

9-19-08 • Polled • FI 105289

WCR SIR FA MAC 2244
PR MAC 453 ET
 VCR DUCHESS 357 PLD

MS BIG TOP 268 PLD ET
PR TOP CLEARWATER 581 ET
 LV MISS CLEARWATER L20 P

WCR SIR FAB MAC 809
 WCR MISS CENTURY 920 TWN
 VCR SIR DUKE 914 PLD
 VCR MISS PERFECTION 0119PD

LHD CIGAR E36
 M6 MS IMPRESSIVE 8380 PLD
 SKYMONT DOMINION 7526
 TO'S MS IMPRESSIVE 8087

EPD/DIR: 4.0, 0.3, 27, 50, 17, 2.2, 31

- Due 9/15/15 to the National Champion PF IMPRESSED 620, projected EPDs 7.2, 0.9, 28, 51, 11, 6.0, 25.
- Very maternal female that is mated to a proven female producer.
- This same program consigned the top seller in the Renaissance.

• **WINDY HILL CHAROLAIS** •

38

CMC MS Stogie 860 Pld

11-24-10 • Polled • FI 134063

GP STOGIE M16 ET
SRC STOGIE 012R
 WM MS ALI DUKE 263 PLD

CMC BUD 102 PLD ET
CMC LADY BUD 134 P
 TWF MISS CABOTIN 020

LHD CIGAR E46
 JWK VICTRA E207 ET
 VCR SIR DUKE 801ET
 CJC MS ALI MARK E18

RC BUDSMYDAD 225 POLLED
 MISS EC CORNERSTONE 92G
 LT WYOMING WIND 4020 PLD
 W S CABOTIN RIVER

EPD/DIR: 1.4, 2.1, 23, 43, 14, 2.7, 25

- Due in January to WC DESERT STORM 3027 P, Projected EPDs are 3.8, 1.7, 35, 59, 12, 4.5, 29.
- DESERT STORM is a powerful herd bull. His growth EPDs are at the top of the breed.
- This five-year-old combines time proven female sires CIGAR, BUDSMYDAD and WYOMING WIND.

• **G4 RANCH** •

39

SMO Easy Blend Tradtions

9-1-11 • Polled • FI 169207

LT UNLIMITED EASE 9108
LT EASY BLEND 5125 PLD
 LT BRENDA 1014 PLD

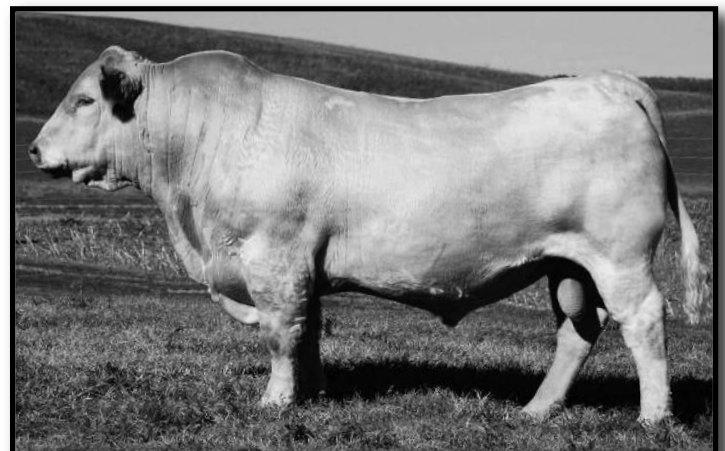
WCR SIR TRADITION 066
RCR TRADITIONS 6701 P
 RCR 8347 POLLED

BCR POLLED UNLIMITED 003
 PP MISS SHANDY 214 R194
 WCR PRIME CUT 764 PLD
 LT BRENDA'S BREEZE 9207P
 WCR SIR TRADITION 4402
 IDEAL 809 45 OF 25
 ASC ELIMINATOR 032
 RCR FLASHIE POLLED 6262

EPD/PE: 3.2, 1.0, 29, 53, 0, 6.8, 15

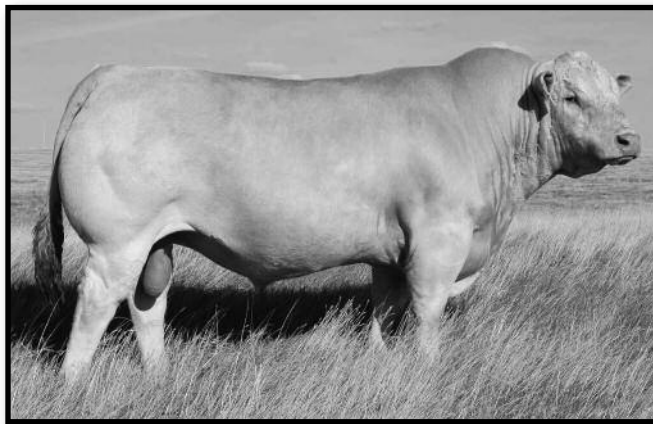
- Due in September to VPI FREE LUNCH 708T, projected EPDs are 8.2, -2.5, 37, 66, 3, 4.8, 22.
- Mother is a sister to Ricketts herd sire TRADITIONS NED. A half sister was one of the top sellers in the Renaissance.
- The mating to FREE LUNCH could pay dividends Her mother sells as Lot 2.

• **STEPHANIE A. MOTTAZ** •



VPI Free Lunch 708T

MEAD FARMS FEMALES



LT LEDGER 0332 P

40

Mead Esmireida M369 P

1-2-13 • Polled • FI 170568

THOMAS OAHE WIND 0772ET P
TR MR FIRE WATER 5792RET
 THOMAS SWISSER SWEET 1764 ET

PF IMPRESSED 620 P ET
PF MS ESMIREIDA 1131 P
 PF ESMIRELDA 607 P

LT WYOMING WIND 4020 PLD
 THOMAS MS CAMELOT 5646
 LHD CIGAR E46
 THOMAS MS BONANZA 8698
 JWK IMPRESSIVE D040 ET
 MISS KC CROCUS 904 POLL
 LDL BLANCO L379 P
 JF ESMIRELDA 607

EPD/BK: -11.1, 5.7, 35, 56, 13, -4.0, 30

- All'd 4/16/15 to LT LEDGER 0332 P, projected EPDs are -1.3, 2.2, 34, 65, 15, 2.1, 32. Pasture exposed to MEAD GRIDMAKER L419 from 4/20/15 to 6/5/15.
- This young FIREWATER daughter sports impressive numbers and individual performance ratioing above 100 at both weaning and yearling.
- She is out of a top daughter of IMPRESSED.

41

Mead Esmirelda M374

2-12-13 • Polled • FI 170569

FARAWAY CHICO 4T PLD ET
SMR WALDORF 83W PLD
 FARAWAY MS SUPREME 23S PLD ET

VCR SIR DUKE 914 PLD
MS ESMIRELDA B302 P
 PF ESMIRELDA 607 P

M6 GRID MAKER 104 PET
 WDZ LUSCIOUS LADY 4008PET
 M6 GRID MAKER 104 PET
 M6IMS 225 SUPREME 0236ET
 WCR SIR DUKE 761
 WCR MISS MAC IV 534
 LDL BLANCO L379 P
 JR ESMIRELDA 607

EPD/BK: 3.3, 1.4, 20, 36, 14, 2.8, 24

- All'd 4/16/15 to LT LEDGER 0332 P, projected EPDs are 6.6, 0.0, 27, 55, 16, 5.5, 29. Pasture exposed to MEAD GRIDMAKER L419 from 4/20/15 to 6/5/15.
- Another good young WALDORF daughter with a splash of 914 in her pedigree.
- She is highly maternal and her milk number is in the top 20 percent of the breed.

42

Mead Miss Crocus L410

2-26-12 • Polled • FI 154022

FARAWAY CHICO 4T PLD ET
SMR WALDORF 83W PLD
 FARAWAY MS SUPREME 23S PLD ET

VCR SIR DUKE 914 PLD
MEAD MISS CROCUS F091 P
 PF MISS CROCUS 7004 P

M6 GRID MAKER 104 PET
 WDZ LUSCIOUS LADY 4008PET
 M6 GRID MAKER 104 PET
 M6IMS 225 SUPREME 0236ET
 WCR SIR DUKE 761
 WCR MISS MAC IV 534
 KC PUREPOWER T51 POLLED
 SAC MISS HESTER

EPD/BK: 6.5, 0.3, 24, 38, 12, 5.5, 24

- All'd 4/16/15 to LT LEDGER 0332 P, projected EPDs are 8.2, -0.6, 29, 56, 15, 6.9, 29. Pasture exposed to MEAD GRIDMAKER L419 from 4/20/15 to 6/5/15.
- This young female benefits from the strong maternal genetics of GRID MAKER and 914.
- She is in the top 20 percent of the breed for calving ease.

43

Mead Lady L430

2-22-12 • Polled • FI 154045

FARAWAY CHICO 4T PLD ET
SMR WALDORF 83W PLD
 FARAWAY MS SUPREME 23S PLD ET

JWK ELIXIR H011 ET
MEAD LADY I103
 MEAD LADY G092 P

M6 GRID MAKER 104 PET
 WDZ LUSCIOUS LADY 4008PET
 M6 GRID MAKER 104 PET
 M6IMS 225 SUPREME 0236ET
 ASC ELIMINATOR 032
 WCR MISS DUKE 8714
 LT WYOMING WIND 4020 PLD
 ORR'S MS IMPRESSIVE TWIN

EPD/DIR: 5.3, 1.0, 20, 41, 21, 5.0, 31

- All'd 4/16/15 to LT LEDGER 0332 P, projected EPDs are 7.6, -0.2, 27, 57, 19, 6.6, 33. Pasture exposed to MEAD GRIDMAKER L419 from 4/20/15 to 6/5/15.
- Another good daughter of the linebred GRID MAKER son WALDORF.
- Look at her Milk EPD, it is in the top two percent of the breed. Very maternal.



LT Easy Pro I158 Pld

44

Mead Ashlee M38 I

1-28-13 • Polled • FI 170572

LT UNLIMITED EASE 9108
LT EASY PRO 1158 PLD
 LT LADY MACBETH 8413 ETP

RC BUDSMYDAD 225 POLLED
MEAD ASHLEE F560 P
 OW ASHLEE 0063 P ET

BCR POLLED UNLIMITED 003
 PP MISS SHANDY 214 R194
 WCR SIR FAB MAC 809
 LCR MISS LINDSKOV 7131
 RC BUD 04 ET
 MISS SHOWGUN RC 416
 VCR SIR DUKE 914 PLD
 LEMMON ACTRESS X140

EPD/BK: 6.6, -0.9, 22, 37, 19, -1.6, 30

- All'd 3/1/15 to LT LEDGER 0332 P, projected EPDs are 8.2, 1.2, 28, 55, 18, 3.3, 32. Pasture exposed to MEAD GRIDMAKER L419 from 4/16/15 to 6/5/15.
- A really nice EASY PRO daughter that excels in calving ease and milk.
- She traces to the dam of the popular sire MEAD RF X FACTOR.



TR PZC Rapid Fire 9775 ET

45

Mead Lady M398

I-24-13 • Polled • FI 170578

TR MR FIRE WATER 5792RET
TR PZC RAPID FIRE 9775 ET
 THOMAS MS IMPRESSIVE 0641

JWK ELIXIR H011 ET
MEAD LADY I103
 MEAD LADY G092 P

THOMAS OAHE WIND 0772ET P
 THOMAS SWISSER SWEET 1764 ET
 JWK IMPRESSIVE D040 ET
 BCI MISS VERYLIMIT 6033P

ASC ELIMINATOR 032
 WCR MISS DUKE 8714
 LT WYOMING WIND 4020 PLD
 ORR'S MS IMPRESSIVE TWIN

EPD/BK: -1.2, 2.9, 32, 61, 13, 1.3, 29

- Al'd 3/22/15 to LT RUSHMORE 8060 PLD, projected EPDs are 5.3, -2.3, 30, 58, 16, 2.1, 31. Pasture exposed to MEAD GRIDMAKER L419 from 4/16/15 to 6/5/15.
- This is a high performing daughter of RAPID FIRE that has good individual performance coupled with strong EPDs.
- RAPID FIRE daughters are making a name for themselves as brood cows.

46

Mead MS Fernando M399

2-2-13 • Polled • FI 170579

TR MR FIRE WATER 5792RET
TR PZC RAPID FIRE 9775 ET
 THOMAS MS IMPRESSIVE 0641

JWK ELIXIR H011 ET
MEAD MS FERNANDO I161
 PF MF MS FERNANDO BUD 1100

THOMAS OAHE WIND 0772ET P
 THOMAS SWISSER SWEET 1764 ET
 JWK IMPRESSIVE D040 ET
 BCI MISS VERYLIMIT 6033P

ASC ELIMINATOR 032
 WCR MISS DUKE 8714
 PF IMPRESSED 620 P ET
 JDJ MS FERNANDO BUD G475

EPD/BK: 8.0, -1.8, 19, 38, 8, 5.3, 18

- Al'd 3/2/15 to LT RUSHMORE 8060 PLD, projected EPDs are 9.8, -2.6, 24, 46, 14, 4.1, 26. Pasture exposed to MEAD GRIDMAKER L419 from 4/16/15 to 6/5/15.
- RUSHMORE is siring the right kind. His sons are popular with purebred and commercial cattlemen.
- Another good daughter of RAPID FIRE that excels in calving ease.

47

Mead MS Impressive L456

I-9-12 • Polled • FI 154348

LT UNLIMITED EASE 9108
BALDRIDGE FASTTRACK 82F
 BALDRIDGE SWEETHEART 53D

MD SENTINEL RULER G1520
MEAD MS IMPRESSIVE J204
 MEAD MS IMPRESSIVE H186P

BCR POLLED UNLIMITED 003
 PP MISS SHANDY 214 R194
 ASC ELIMINATOR 032
 JB SWEETHEART 32A

LHD MR RULER D310
 MD MS SENTINEL JON B389
 LT POLLED VALUE 9089
 MF MS IMPRESSIVE E201

EPD/DIR: 15.1, -5.2, 11, 27, 16, 10.1, 21

- Al'd 3/22/15 to WC BIG BEN 9036 P, projected EPDs are 13.6, -4.8, 20, 42, 12, 9.3, 22. Pasture exposed to MEAD GRIDMAKER L419 from 4/16/15 to 6/5/15.
- This daughter of FASTTRACK is in the top one percent for calving ease and birth weight. This makes her a versatile breeding piece that can be mated to a wide variety of growth sires.
- BIG BEN is a widely used calving ease sire.



LT Rushmore 8060 Pld

PREGNANT RECIPIENT

48

TCCS Miss Lilly

5-24-12 • Polled • FI 152323

WDZ FIREMAKER 6062 P ET
PF MR FIREMAKER
 PF MISS PRIMECUT

THREE TREES WIND 3001 ET
PF MISS WIND 7211 P
 PF IMPRESSIONS 77N P ET

M6 GRID MAKER 104 PET
 THOMAS SWISSER SWEET 1764 ET
 WCR PRIME CUT 764 PLD
 PF LADY LUCK

LT WYOMING WIND 4020 PLD
 JWK VERNA E225 ET
 PF IMPRESSED 620 P ET
 VCR MISS DUCHESS 351 PLD

EPD/PE: 0.8, 2.6, 31, 57, 4, 0.6, 19

- Due 1/11/16 with a planned mating of CML DIABLO 2X and CREEK CUT GRETA 576 P. Projected EPDS 5.8, -1.5, 15, 43, 8, 3.7, 15.
- This purebred recipient cow carries a gem. GRETA doesn't miss and she has produced winners on the tanbark. Including RF Greta, a maternal sib to this mating.
- The GOIN PLACES female line is as good as any and the addition of the Canadian outcross sire DIABLO could be special.

• TC CATTLE SERVICES •



RF Greta

COMPOSITES



Lot 49 - RCR Full Meal 2983

49

RCR Full Meal 2983

11-25-12 • Polled • RF706852

LT RIO BLANCO 1234 P
VPI FREE LUNCH 708T
 VPI MISS DUCHESS 404 P

WCR PRIME CUT 764 PLD
 LT PRAIRIE MAID 4054
 WCR PRIME CUT 764 PLD
 VCR MISS DUCHESS 703 PLD

FNF-ARAR RED ANGUS/RED ANGUS
RCR 9810 P
 RCR NED'S MISS KATE 7718 P

RCR TRADITIONS NED P0425
 RCR 5626 P

- Due 9/22/15 to LT LEDGER 0332 P.
- Very nice three quarter daughter of FREE LUNCH.
- It won't be long before she has a LEDGER baby.

• RICKETTS CHAROLAIS RANCH •

50

RCR 2978

11-4-12 • Polled • RF706850

WCR SIR TRADITION 066
RCR TRADITIONS NED P0425
 RCR 8347 POLLED

WCR SIR TRADITION 4402
 IDEAL 809 45 OF 25
 ASC ELIMINATOR 032
 RCR FLASHIE POLLED 6262

FNF-ANAN ANGUS/ANGUS

- Due 9/14/15 to LT LEDGER 0332 P.
- This is a nice half blood female. These are very good breeding pieces that can be used in many different facets of the industry.
- The mating of LEDGER has been well accepted.

• RICKETTS CHAROLAIS RANCH •

51

RCR Strawberry 1 4062 P

9-21-14 • Polled • RF708345

LT RIO BLANCO 1234 P
VPI FREE LUNCH 708T
 VPI MISS DUCHESS 404 P

WCR PRIME CUT 764 PLD
 LT PRAIRIE MAID 4054
 WCR PRIME CUT 764 PLD
 VCR MISS DUCHESS 703 PLD

FNM-ANAN ANGUS/ANGUS
RCR LOOKOUTS KATIE 8791
 RCR MISS TRADITION 3564P

RCR TRADITIONS NED P0425
 RCR MISS KIM 4196

- Two really nice three quarter heifers that are ready to breed.
- Charolais composites have a place in a lot of breeding programs.
- Utilize these genetic combinations to create new options for bull buyers.

• RICKETTS CHAROLAIS RANCH •

52

RCR Strawberry 2 4067 P

11-16-14 • Polled • RF708347

LT RIO BLANCO 1234 P
VPI FREE LUNCH 708T
 VPI MISS DUCHESS 404 P

WCR PRIME CUT 764 PLD
 LT PRAIRIE MAID 4054
 WCR PRIME CUT 764 PLD
 VCR MISS DUCHESS 703 PLD

FNM-ANAN ANGUS/ANGUS
RCR MISS LOOKOUT 8773P
 RCR NED'S JENNY 6687 P

RCR TRADITIONS NED P0425
 RCR FACTORESS JEN 7305 P

SEMEN



KC Design 4246

53

6 Straws

WCR Sir Duke 761

Great female sire, his daughters are some of the top donors in the breed.

• WHITE CHAROLAIS •

54

10 Straws

KC Design 4246

22 daughters averaged \$6900 in Wienk Sale. No more semen is available.

55

10 Straws

NS/SCF Seven & 7 I309

What an opportunity to use the outcross Denver Champion.

56

10 Straws

Oakdale Duke 9003 P

The proven multiple trait sire would be a great option on Firewater daughters.

• WILD INDIAN ACRES •

FROZEN EMBRYOS

57

3 Embryos - 1 pregnancy
PZC Brooklyn 939 x Elder's Star Buck 284 B

What a mating. Get in on the ground floor and take advantage of this chance to acquire genetics from the new Canadian outcross STAR BUCK. He was purchased with the foresight to mate to the quality FIREWATER daughters and BROOKLYN is one of the best tracing to the IMMORTAL 0641.

IVF Sexed Heifer Embryos

58

3 Embryos - 1 pregnancy
ACE MS Bud 2419 x TR PZC Turton 0794 ET

59

3 Embryos - 1 pregnancy
Ace MS Bud 2419 x Monopoly

2419 is a massive, moderate framed CIGAR donor out of the 418 cow family. The TURTON heifer calves will be great looking females with a lot to them. The MONOPOLY calves out of her have already done some winning.

• POLZIN CATTLE CO. •

60

3 Embryos - 1 pregnancy
ACE Miss Wienk 7171880-P125 x LT Ledger 0332 P

61

3 Embryos - 1 pregnancy
ACE Miss Wienk 7171880-P125 x TR PZC Turton 0794 ET

P125 is a good donor consistently producing quality offspring no matter what bull she is mated to. She is paired with two of the breed's best.

Take your pick, either mating will produce a great one.

• MARK RICKABAUGH •

62

3 Embryos - 1 pregnancy
LC Lady Wind 4114 P ET x M6 Bells and Whistles 258 P

63

3 Embryos - 1 pregnancy
LC Lady Wind 4114 P ET x Keys Ten-acious 166S

This is a full sib to the legendary WYOMING WIND mated to the \$105,000 Bells & Whistles. His first calves are topping sales and turning heads. The mating to the performance sire TEN-ACIOUS should produce offspring that grow well.

• SKEANS CATTLE CO. •

64

3 Embryos - 1 pregnancy
DA Marion 328 P x M6 Bells & Whistles 258 P

This mating could reach rock star status. This female produces good ones and the first BELLS & WHISTLES calves have gotten everybody's attention.

65

3 Embryos - 1 pregnancy
CJC CIGAR UI24 x WC Capital Gain

A great CIGAR daughter mated to the up and coming CAPITAL GAIN. The genetics tied up here are incredible with LEDGER and J139.

• DOUBLE H CHAROLAIS •

66

3 Embryos - 1 pregnancy
CCC RR CC Temptress 431 x KC Design 4246 P

67

3 Embryos - 1 pregnancy
CCC RR CC Temptress 431 x MCF Bohannon 305A

Great young daughter of the National Champion TEMPLETON mated to two great sires.

KC DESIGN is a proven producer and his semen is not on the open market.

BOHANNON is a National Champion and his calves should be destined for the tanbark.

• L&N CHAROLAIS •

68

3 Embryos - 1 pregnancy
Bar 5 Preview 418 x Circle Cee Fired Up 104Y

This could be a great mating, especially for those who are breeding some red genetics.

FIRE UP'S first calves have been a hit. They are structurally correct and soft made.

The PREVIEW cow has been mated to many different sires and always produces good ones.

• WILD INDIAN ACRES •



Ace MS Bud 2419



TR PZC Turton 0794 ET



DA Marion 328 P



M6 Bells & Whistles 258 P



CCC RR CC Temptress 431

- CONSIGNORS -

- DAVIS CHAROLAIS** Lot 36
Allen & Julie Davis - De Soto, MO • (636) 586-8759
- CORMAN CHAROLAIS** Lots 1, 5, 11
Dan & Connie Corman - Pomona, MO • (417) 469-3936 • (417) 252-1373
- DOUBLE H CHAROLAIS** Lot 64, 65
Harlan & Susan Heicht - Paynesville, MN • (320) 760-0359
- FOX HOLLOW FARMS** Lots 10, 16,
Stephen & Michal Mellott - Catoosa, OK • (918) 409-6068
- G4 RANCH** Lots 28, 38
Ronnie Grass - Bonne Terre, MO • (314) 486-7155
- HALE FARMS** Lots 12, 13, 15
Rick Hale - Louisburg, MO • (417) 838-7251
- L&N CHAROLAIS** Lot 66, 67
Larry & Norma Julian - Crane, MO • (417) 536-6582
- MARK RICKABAUGH** Lot 60, 61
Greely, KS • (785) 760-2497
- MEAD FARMS** Lots 40, 41, 42, 43, 44, 45, 46, 47
Alan Mead - Barnett, MO • (573) 216-0210
- MDL FARMS** Lots 6, 25, 26
Matt & Dee LaFever - Joy, IL • (309) 537-3677 • Cell: 563-260-8193
- PARRISH CHAROLAIS** Lot 33
Bob Parrish - Springfield, MO • (417) 833-3132
- POLZIN CATTLE CO.** Lot 57, 58, 59
Chris & Leslie Polzin - Darwin, MN • (612) 916-0105
- RICKETTS CHAROLAIS RANCH** Lots 27, 30, 49, 50, 51, 52
Rex & Sondra Ricketts - Hallsville, MO • (573) 808-6286 • (573) 696-3088
- ROCKY RIDGE CHAROLAIS** Lots 17, 29, 31
Kyle & Tara Booth - Fair Grove, MO • (417) 830-0721
- SKEANS CATTLE CO.** Lot 62, 63
David Skeans - Gainesville, TX • (985) 870-4113
- STEPHANIE MOTTAZ** Lots 2, 39
Hallsville, MO • (573) 696-5574
- TC CATTLE SERVICES** Lot 48
Doug Thurnau - Vandalia, IL • (618) 604-4714
- THURNAU CHAROLAIS** Lots 3, 32
Robert Thurnau - Trenton, IL • (618) 644-2311
- VOLLBORN CATTLE CO.** Lots 4, 7, 14, 34
Fred & Luke Vollborn - Bidwell, OH • (740) 245-0380
- WHITE CHAROLAIS** Lots 18, 19, 20, 21, 22, 23, 24, 53
Patrick & Cheryl White - Allegan, MI • (269) 673-2329
- WILD INDIAN ACRES** Lots 8, 9, 54, 55, 56, 68
Mike & Sara Kisner - De Soto, MO • (636) 274-9515 • Cell: (636) 236-0306
- WINDY HILL CHAROLAIS FARMS** Lots 35, 37
David, Annette & Dylan Bonacker - Cedar Hill, MO • (636) 285-1656 • Cell: (314) 974-5230

- NOTES -



Post Office Box 308
Koshkonong, MO 65692

FIRST CLASS

FIRST CLASS



Lot 1 - DC MS Pomona Kojack C902P