

The Genetic Heritage *Charolais Female Sale*

also featuring an offering of young ANGUS FEMALES

Saturday, August 7, 2010

12:00 p.m. CST

Fink Beef Genetics Sale Facility, Randolph, Kansas



Beef Genetics

To view the offering after July 25, go to www.finkbeefgenetics.com or LiveCattleSales.com



Fink Beef Genetics



Megan, Lori & Galen Fink
15523 Tuttle Creek Blvd., Randolph, Kansas 66554
Phone/Fax: 785-293-5106 Email: finkbull1@twinvalley.net
www.finkbeefgenetics.com

Commercial Services Representatives

Gene Barrett 785-224-8509

Barrett Broadie 620-635-6128

Charolais Breeders,

Welcome to our 4th female production sale. The females are like our previous sales—they combine eye appeal, balanced EPDs, outstanding carcass traits, excellent feet and great udder quality.

This is again a very young offering. Only 15 cows are over 4 years of age out of approximately 110 head. They have their lifetime production ahead of them for sure!

As we stated in our letter from last year's sale—**there may never be a better time to surround yourself with cows.** Think about it, if you have grass, what else will continue to grow with less risk? Air, food, water are the essentials for life—and the beef industry will be in the hunt.

We do offer a bull buyback on resulting bull calves meeting our requirements. For more information, please let us know.

Our Charolais bull sales continue to be some of the highest in the breed for numbers sold. We rely on commercial cattlemen to guide our program—we try to produce what they want. Generally, our program is totally AI and ET. However, due to the worst winter experienced in our area for many years, we had to turn bulls out in a couple of pastures. They are bulls we own an interest in and feel very comfortable with their genetics.

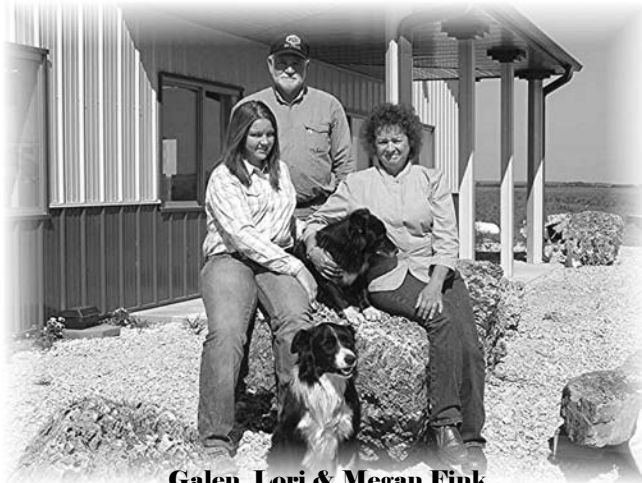
The Charolais breed is the breed positioned for the future. Crossbreeding is again in vogue—and commercial producers have responded by making Charolais bulls more valuable than ever before.

Thanks to past customers for making our female sale last year one of the top averaging in the U.S. We will continue to produce profit-oriented Charolais genetics.

Thank you for taking time to review this booklet. Remember, we will video the sale offering and the cattle will be available on line at www.finkbeefgenetics.com or www.livecattlesales.com after approximately July 25th.

Sincerely,

Galen Fink



Galen, Lori & Megan Fink



Commercial Services Representative
Barrett, Lori, Colt, Raegan & Austin Broadie



Commercial Services Representative
Gene, Anna, Payden & Ella Barrett

The entire sale offering can be viewed on our website at www.finkbeefgenetics.com or LiveCattleSales.com after July 25th.



Genetic Heritage

Charolais Female Sale

Saturday, August 7, 2010, 12:00 p.m.
Fink Beef Genetics Sale Facility
Randolph, Kansas

Sale Day Phones

Galen's Cell.....785-532-9936
Lori's Cell.....785-532-8171
Megan's Cell785-410-5559
Sale Facility.....785-293-5176
Gene's Cell785-224-8509

Auctioneer

Greg Clifton
817-313-5250

Sale Consultants

Bob Morton..... 931-842-1234
Dennis Adams, Outfront Cattle Service..... 979-229-4472
John Mitchell, Mitchell Management..... 870-897-5037
Dale Jedlicka 417-331-5140
John Chism..... 859-299-1767
Clifford Mitchell..... 405-246-6324
Brett Sayre..... 573-881-1876
Chris Polzin..... 612-916-3105
Leo Muncy..... 304-466-2675

Livestock Ringmen

Kristian Rennert, *Charolais Journal*..... 308-440-9463
Guy Peverley, *High Plains Journal* 785-456-9911
Justin Stout, *Stock Exchange*..... 913-645-5136

Trucking

Truckers believed to be reliable plan to be available.
Insurance for your purchase is suggested.

Transportation

Kansas City, Missouri, is served by most major airlines;
Manhattan, Kansas, is approximately 2 hours west of the KCI
Airport. Some flights can be coordinated through the Man-
hattan Airport. We will gladly meet airplanes upon request at
the Manhattan airport.

Food

We will be hosting a pre-sale meal and beverages at the sale
facility on Friday evening, catered by The Little Apple Brew-
ery, Manhattan. Sale day lunch also available at the sale facility
catered by The Little Apple Brewery.

Motel Information

Best Western—Manhattan..... 785-537-8300
Clarion Hotel—Manhattan..... 785-539-5311
Comfort Inn—Manhattan 785-770-8000
Fairfield Inn—Manhattan 785-539-2400
Hampton Inn—Manhattan 785-539-5000
Super 8—Manhattan 785-537-8468
Cedar Court—Clay Center 785-632-2148
Best Western—Marysville..... 785-562-2354
Oak Tree Inn—Marysville 785-562-1234
Super 8—Marysville 785-562-5588
Thunderbird Motel—Marysville 785-562-2373

Sale Location

Fink Beef Genetics Sale Facility is located:
Approximately 22 miles northwest of Manhattan on Hwy 77.
Approximately 35 miles south of Marysville on Hwy 77.
Approximately 25 miles east of Clay Center on Hwy 24, then
north on Hwy 77 approximately 8 miles.

The sale facility is approximately .8 of a mile north of the
Randolph Short Stop gas station on Hwy. 77. Turn west up
driveway to sale facility. If coming from the North, watch for
signs after crossing the Tuttle Creek Lake bridge.

Livestock Insurance

Available at sale site.

Terms and Conditions

All sales are cash or check and settlement must be made
upon conclusion of the sale. Sale will be conducted under
standard sale terms. All purchases are encouraged to be
insured. Excellent care will be given to your purchases
until delivery. However, Fink Beef Genetics will not be
responsible for any uninsured animals after the sale. No
cattle to be removed until settlement has been made.

Inspection of Cattle

Cattle may be seen at the sale site starting at noon, Friday,
August 6. Early inspection can be arranged. Please call
ahead if possible.

Liability

Neither the seller, sale staff, or sale facility are responsible
for any accidents.

Attention Buyers—Potential Bull Sales

**Anyone that purchases 10 females or more in this sale
will be eligible to JOINTLY merchandise bulls with Finks
if they desire (meeting requirements). Purchasers of
less than 10 head will be eligible for bull sales TO FINKS
(meeting requirements). For more details, please call
or e-mail and we will send you an information sheet.**

Reference Sires

M6 Gridmaker 104.....M633377
M6 Gain & Grade 927.....M511007
LT Unlimited Ease 9108M301930
Baldrige Kojack 29K.....M602060
Fink 7706 of 5651 BY.....M762016

*(Topped our 2008 bull sale at \$6,000—Dam sold for 1/2 interest to
Brunner Charolais, Texas, for \$5,000 in 2007. 7706 scanned .07 BF;
4.14 IMF; 12.6 RE; -1.9 BW; 47 YW!)*

Fink 8716 of 10224 T WindEM772266

*(Powerful Thundering Wind son out of 10224 we kept to breed some
cows to.)*

Fink 2250 of 3575 D040M658950

*(Raile Charolais herd sire. His sons are working in some of the top
herds in the United States.)*

Kristian Rennert, Area AICA Field Representative



As Charolais breeders, we are very
fortunate in our area to have Kristian
Rennert as our fieldman. We appreci-
ate his genuine interest and helpfulness
in our operation.

Thank you for doing such a great job
for the Charolais breed.

MISS FAMILY

1 Finks Miss 5651 1806 GG

Calved: 9/03/05 Horned F1038911 Tattoo: 5651

WCR Sir Duke 961 BR Duke 261

M6 Gain & Grade 927 PLD

M511007 M6 Miss Mac 4140

WCR Miss Tradition 8335

HCR Mac 9176 Polled

M6 Miss Woo 262

HCR Flash 5074 Polled

Finks Miss 1806 3575 FET

F945089 WCR Miss Tradition 3575

HCR Exodus 9033 Polled

Miss HCR Mac 2015 Polled

WCR Sir Tradition 066

WCR Miss Duke 9026

CE	BW	WW	YW	MILK	MCE	TM	SC	CW	REA	FAT	MB
4.3	-1.1	39	67	16	1.0	36	0.6	22	0.02	-0.034	0.36

- One of the most intriguing females to sell in 2010.
- 1/2 interest sold to Bruner Charolais in our 2007 sale.
- Her Dam of Distinction mother sold in 2006 for \$6,000 to Bruner and C5 Charolais, LA.
- 5651's 1st bull calf, 'Fink 7706' is a feature sire in this sale and sold for \$6,000 for 1/2 interest to Jeff Schurle, KS.
- 5651 has a beautiful udder.
- Full sisters to 1806 have sold to Harold Good, KS, \$4,000; Mike Berg, SD, \$4,200; Denny Stephenson, MO, \$3,600.
- Lot 1A, heifer calf, tattoo 02, born 3/23/10, by Fink 2250 of 3575 D040.
- Lot 1B, heifer, tattoo 9634, polled, born 8/04/09, by M6 Gridmaker 104
- Co-owned with Bruner Charolais.
- Selling full interest and full possession.
- Currently flushing, sells open with 2 embryos by M6 Gridmaker 104.



Finks Miss 5651 1806 GG, Lot 1



Champion handshake . . . Showmanship at California, 2009 Jr. Nationals

2 Fink Miss 6907 1806 GG

Calved: 7/25/06 Polled EF1063222 Tattoo: 6907

WCR Sir Duke 761 BR Duke 261

M6 Gain & Grade 927 PLD

M511007 M6 Miss Mac 4140

WCR Miss Tradition 8335

HCR Mac 9176 Polled

M6 Miss Woo 262

HCR Flash 5074 Polled

Finks Miss 1806 3575 FET

F945089 WCR Miss Tradition 3575

HCR Exodus 9033 Polled

Miss HCR Mac 2015 Polled

WCR Sir Tradition 066

WCR Miss Duke 9026

CE	BW	WW	YW	MILK	MCE	TM	SC	CW	REA	FAT	MB
2.1	-0.1	31	56	21	0.3	37	0.6	14	-0.11	-0.027	0.37

- Currently flushing. Sells open with 2 embryos by M6 Gridmaker 104.
- Beautiful full sister to previous lot—this female scanned extremely well also with an IMF of 4.0 and a .14 BF.
- 1806 is a Dam of Distinction.
- Note Grandam, 3575, is also the dam of Cliff Raile's 2250 bull! Not just a happen-so in this family
- Marbling EPD of .37! Along with a great kind, great udder, and great feet.
- Lot 2A, heifer calf, tattoo 07, born 3/23/10 by Fink 2250 of 3575 D040. **Double bred 3575!**



Finks Miss 6907 1806 GG, Lot 2

3 Fink Miss 8916 6908 Pro P

Calved: 7/30/08 Polled F1001604 Tattoo: 8916

LT Unlimited Ease 9108 BCR Polled Unlimited 003

LT Easy Pro 1158 PLD

M620348 LT Lady Macbeth 8413 ETP

PP Miss Shandy 214 R194

WCR Sir Fab Mac 809

LCR Miss Lindskov 7131

M6 Gain & Grade 927 PLD

Fink Miss 6908 1906 GG

EF1063223 Finks Miss 1806 3575 FET

WCR Sir Duke 761

M6 Miss Mac 4140

HCR Flash 5074 Polled

WCR Miss Tradition 3575

CE	BW	WW	YW	MILK	MCE	TM	SC	CW	REA	FAT	MB
4.6	-0.9	26	46	19	-2.4	32	0.3	13	0.11	-0.003	0.35

- Easy Pro heifer with a .35 marbling EPD. Imagine the possibilities out of this family!
- Note 1806 is a Dam of Distinction! Plus much more!
- Bred 2/04/10 to M6 Gridmaker 104.

MISS FAMILY

4 Fink Miss 8850 4851 GM

Calved: 8/18/08 Polled EF1111981 Tattoo: 8850
WCR Sir Tradition 066 WCR Sir Tradition 4402

M6 Grid Maker 104 PET

M633377 VCR Miss Mac IV 317

Ideal 809 45 of 25
WCR Sir FA Mac 2244
VCR Miss Duchess 113 PLD

Eatons Beyond 7243

Eatons Centurion

Finks Miss 4851 1804 EB

F1020369 Finks Miss 1804 3575 FET

Eatons Miss Falls 3639

HCR Flash 5074 Polled

WCR Miss Tradition 3575

CE	BW	VW	YW	MILK	MCE	TM	SC	CW	REA	FAT	MB
2.7	0.5	27	53	15	4.4	28	0.5	9	0.33	-0.012	0.25

- The dam sold for \$4,500 in our 2006 sale as a bred heifer to C5 Charolais, LA.
- The grandam, 1804, sold to Harold Good for \$4,000.
- Note 1804 is a full sister to 1806 . . . A Dam of Distinction.
- This heifer holds a lot of potential.
- Bred 5/28/10 to M6 Gain & Grade 927.

5 Fink Miss 9541 7736 BG

Calved: 8/11/09 Polled F1117089 Tattoo: 9541
LT Assertion 1277 P Eatons Assert 9171

LT Bluegrass 4017 P

M686569 LT Pearl's Breeze 2236 P

LT Alli's Class 9140 P

LT Wyoming Wind 4020 PLD

LT Unlimited Pearl 7053 P

M6 Gridmaker 104 P

WCR Sir Tradition 066

Finks Miss 7736 1803 GM ET

EF1084117 Finks Miss 1803 3575 FET

VCR Miss Mac IV 317

HCR Flash 5074 Polled

WCR Miss Tradition 3575

CE	BW	VW	YW	MILK	MCE	TM	SC	CW	REA	FAT	MB
6.1	-1.0	22	44	13	2.7	24	0.5	9	0.35	0.001	0.17

- Watch this Bluegrass heifer!
- She was put in this sale as an attraction.
- Dam is a 1st-calf heifer—this heifer weaned at 708# actual during a very bad winter!
- Note the Miss family—dam is a full sister to many high sellers in past sales for us.
- Ready to breed this fall!

6 Fink Miss 9639 3908 GM

Calved: 8/08/09 Polled EF1117086 Tattoo: 9639
WCR Sir Tradition 066 WCR Sir Tradition 4402

M6 Grid Maker 104 PET

M633377 VCR Miss Mac IV 317

Ideal 809 45 of 25

WCR Sir FA Mac 2244

VCR Miss Duchess 113 PLD

Eaton's Beyond 7243

Eatons Centurion 3324

Finks Miss 3908 1804 EBP

F993743 Finks Miss 1804 3575 FET

Eatons Miss Falls 3639

HCR Flash 5074 Polled

WCR Miss Tradition 3575

CE	BW	VW	YW	MILK	MCE	TM	SC	CW	REA	FAT	MB
2.9	0.5	26	52	16	4.4	30	0.5	9	0.33	-0.012	0.25

- Very unique yearling heifer.
- Her dam sold to Sheppard Charolais, KS, in 2009.
- Study the genetics (proven), cow family (proven).
- 3575, great grandam, may very well be one of the best (if not the best) 066 daughters in the breed.
- Ready to breed this fall!

7 Fink Miss 9591 7792 GM

Calved: 8/21/09 Polled EF1117079 Tattoo: 9591
WCR Sir Tradition 066 WCR Sir Tradition 4402

M6 Grid Maker 104 PET

M633377 VCR Miss Mac IV 317

Ideal 809 45 of 25

WCR Sir FA Mac 2244

VCR Miss Duchess 113 PLD

LT Western Spur 2061 PLD

Eatons Predictor 9230

Fink Miss 7792 5784 Spur

F1084465 Fink Miss 5784 2547 9176

LT Maiden's Breeze 8242 P

HCR Mac 9176 Polled

Finks Miss 25473575Budet

CE	BW	VW	YW	MILK	MCE	TM	SC	CW	REA	FAT	MB
2.7	0.3	29	54	12	1.7	26	0.8	20	0.57	-0.011	0.13

- A featured Gridmaker yearling heifer.
- Dam sold last year as a bred heifer to Sheppard Charolais, KS, for \$3,000.
- Note the family—the Miss family has served our purebred and commercial customers very well.
- Ready to breed this fall!

8 Fink Miss 7729 1803 PD ET

Calved: 9/01/07 Polled EF1084112 Tattoo: 7729
Eatons Performer 6709 Eatons Treasure 177

Eatons Predictor 9230

M304405 Eatons Miss Big Sandy

Eatons Miss Fonzo 2532

Eatons Big Deal

Eatons Miss Sandra 9210

HCR Flash 5074 Polled

HCR Exodus 9033 Polled

Finks Miss 1803 3575 FET

F945089 WCR Miss Tradition 3575

Miss HCR Mac 2015 Polled

WCR Sir Tradition 066

WCR Miss Duke 9026

CE	BW	VW	YW	MILK	MCE	TM	SC	CW	REA	FAT	MB
2.9	-0.4	16	41	18	4.2	26	0.3	9	0.29	0.011	0.22

- Dam is a full sister to 1806, a Dam of Distinction.
- This cow family proven in all areas.
- 1803 sold for \$2,700 as an aged cow to Calvin Higgins, MO, in 2007.
- Lot 8A, heifer calf, tattoo 06, born 4/06/10 by Fink 7706 of 5651 BY.
- Breeding information will be announced sale day.

9 Fink Miss 8891 5784 GM P

Calved: 9/26/08 Polled F1101581 Tattoo: 8891
WCR Sir Tradition 066 WCR Sir Tradition 4402

M6 Grid Maker 104 PET

M633377 VCR Miss Mac IV 317

Ideal 809 45 of 25

WCR Sir FA Mac 2244

VCR Miss Duchess 113 PLD

HCR Mac 9176 Polled

FZ Mighty Mac Polled 828

Finks Miss 5784 2547 9176

F1040925 Finks Miss 25473575BUDET

Lady HCR Mac 8063

RC Budsmydad 225 Polled

WCR Miss Tradition 3575

CE	BW	VW	YW	MILK	MCE	TM	SC	CW	REA	FAT	MB
2.4	0.9	36	64	17	-0.4	35	0.6	21	0.47	-0.024	0.18

- Powerhouse bred heifer, that ratioed 124 at weaning.
- Please take a look at the EPDs—and the best part—every animal in the pedigree are household names and proven. You know what they are going to do!
- The Fink program builds around proven sires as much as possible.
- Bred approximately 2/10/10 to Fink 7706 of 5651 BY.

MISS FAMILY

10 Fink Miss 9593 F610 FW

Calved: 9/08/09 Polled Tattoo: 9593
M6 Gridmaker 104 PET WCR Sir Tradition 066

WDZ Firemaker 6062 P ET

EM729220 Thomasswissersweet1764ET

VCR Miss Mac IV 317

LHD Cigar E46

Thomas MS Bonanza 8698

M6 Gain & Grade 927 PLD

Finks Ease 610 1861 GG

F1051621 Finks Ease 1861949Budet

WCR Sir Duke 761

M6 Miss Mac 4140

RC BudsMyDad225 Polled

WCR Miss Impressive 949P

CE	BW	WW	YW	MILK	MCE	TM	SC	CW	REA	FAT	MB
n/a	n/a	n/a	n/a	n/a	n/a	n/a	n/a	n/a	n/a	n/a	n/a

- A younger Firemaker heifer.
- Dam is an excellent Gain and Grade female with a real nice udder and milk.
- Outcross genetics for Finks here.
- Ready to breed this fall!

11 Fink Miss 8906 6849 Lead P

Calved: 8/09/08 Polled F1100205 Tattoo: 8906
Eatons Candidate 9177 Eatons Continuation 7094

Eatons Leader 2233 P

M652217 Eatons Rhodora 9506

Eatons Miss Falls 3639

Eatons Celebration

Eatons Miss Rhodora 7518

M6 Gain & Grade 927 PLD

Finks Miss 6849 912 GG

F1063266 JCR Miss Impressive 912P

WCR Sir Duke 761

M6 Miss Mac 4140

JWK Impressive D040 ET

WCR Miss Ease 6192

CE	BW	WW	YW	MILK	MCE	TM	SC	CW	REA	FAT	MB
4.2	0.5	24	47	-2	7.7	10	0.6	16	0.07	0.028	0.11

- Nice bred heifer by Leader
- Grandam was one of our picks of Scott Jennsen's heifers in 2000.
- Bred 12/13/09 to LT Easy Pro 1158.

12 Fink Miss 8909 6861 Lead P

Calved: 8/07/08 Polled F1100208 Tattoo: 8909
Eatons Candidate 9177 Eatons Continuation 7094

Eatons Leader 2233 P

M652217 Eatons Rhodora 9506

Eatons Miss Falls 3639

Eatons Celebration

Eatons Miss Rhodora 7518

M6 Gain & Grade 927 PLD

Finks Miss 6861 2530 GG

F1063233 Finks Miss 2530 912 FET

WCR Sir Duke 761

M6 Miss Mac 4140

HCR Flash 5074 Polled

JCR Miss Impressive 912P

CE	BW	WW	YW	MILK	MCE	TM	SC	CW	REA	FAT	MB
5.5	0.0	30	58	-1	8.5	13	0.6	15	0.11	0.021	0.15

- Eatons Leader daughter out of strong carcass marbling genetics on the bottom side.
- Expect good udders and feet on this female.
- Bred approximately 3/01/10 to Fink 7706 of 5651 BY.

13 Fink Miss 8910 6865 Spur P

Calved: 8/02/08 Polled F1101597 Tattoo: 8910
Eatons Predictor 9230 Eatons Performer 6709

LT Western Spur 2061 PLD

M645786 LT Maiden's Breeze 8242P

Eatons Miss Big Sandy

LT Wyoming Wind 4020 PLD

LT Unlimited Maiden 1131

LT Easy Pro 1158 PLD

Fink Miss 6865 2520 Pro

F1062335 Finks Miss 25503575BUDET

LT Unlimited Ease 9108

LT Lady Macbeth 8413 ETP

RC Budsmydad 225 Polled

WCR Miss Tradition 3575

CE	BW	WW	YW	MILK	MCE	TM	SC	CW	REA	FAT	MB
1.4	-0.2	24	44	7	-0.4	19	0.7	13	0.16	0.013	0.16

- Note grandam 3575 is a Dam of Distinction and a maternal sister to Raile Charolais herd sire Fink 2250 who is featured in this sale by progeny and service matings.
- Expect this polled bred heifer to have that great udder and great feet also.
- Bred approximately 2/01/10 to Finks 7706 of 5651 BY.

14 Fink Miss 5780 2574 Pro

Calved: 8/12/05 Polled F1042334 Tattoo: 5780

LT Easy Pro 1158 PLD

M620348 LT Lady Macbeth 8413 ETP

LT Unlimited Ease 9108

BCR Polled Unlimited 003

PP Miss Shandy 214 R194

WCR Sir Fab Mac 809

LCR Miss Lindskov 7131

JWK Impressive D040 ET

Finks Miss25743575D040ET

F971777 WCR Miss Tradition 3575

WCR Sir Fa Mac 2244

HBR Lady Liz 721 P

WCR Sir Tradition 066

WCR Miss Duke 9026

CE	BW	WW	YW	MILK	MCE	TM	SC	CW	REA	FAT	MB
7.9	-1.7	19	27	16	-0.8	25	0.1	14	-0.03	0.028	0.26

- Currently flushing, sells open with 2 embryos by EC No Doubt.
- 1 of 4 females we selected fall of 2009 to flush.
- Beautiful udder, feet and 'kind.'
- A maternal sister is a Dam of Distinction.
- The dam of this female is a full sister to the Raile Bull, Fink 2250.
- Her bull weaned this spring at an actual 732#.



Finks MS 5780 2574 Pro, Lot 14

MS DUKE 10224 FAMILY

15 Fink Miss 8854 10224 GM ET

Calved: 7/26/08 Polled EF1097727 Tattoo: 8854

16 Fink Miss Duke 8852 10224 GM

Calved: 7/25/08 Polled EF1102217 Tattoo: 8852

17 Fink Miss Duke 8853 10224 GM

Calved: 8/23/08 Polled EF10102218 Tattoo: 8853

WCR Sir Tradition 066

M6 Grid Maker 104 PET

EM633377 VCR Miss Mac IV 317

WCR Sir Duke 761

C5 MS Duke 10224 PLD ET

F1036178 LHD MS Cigar J160

WCR Sir Tradition 4402

Ideal 809 45 of 25

WCR Sir FA Mac 2244

VCR Miss Duchess 113 PLD

BR Duke 261

WCR Miss Tradition 8335

LHD Cigar E46

LHD Fernando Mac C1205

CE	BW	WW	YW	MILK	MCE	TM	SC	CW	REA	FAT	MB
1.5	1.4	33	61	12	1.9	28	0.8	19	0.47	-0.022	0.04

- 3 full sisters—Powerhouse full sisters out of a powerful 761 dam.
- 4 full brothers averaged nearly \$3,000 in our 2009 bull sale.
- Note ribeye of .47.
- 8854, Lot 15, was shown last year at the Jr National and was second in a strong class.
- 8854, Lot 15, bred 11/15/09 to Baldrige Kojack 29K.
- 8852, Lot 16, bred 1/08/10 to Fink 2250 of 3575 D040.
- 8853, Lot 17, bred approximately 2/10/10 to Fink 7706 of 5651 BY.



Fink Miss 8854 10224 GM ET, Lot 15



Fink Miss Duke 8852 10224 GM, Lot 16

MEGAN FAMILY

18 Fink Megan 7750 241 GM ET

Calved: 9/22/07 Polled EF1084131 Tattoo: 7750

WCR Sir Tradition 066

M6 Grid Maker 104 PET

EM633377 VCR Miss Mac IV 317

WCR Sir Tradition 4402

Ideal 809 45 of 25

WCR Sir FA Mac 2244

VCR Miss Duchess 113 PLD

LT Wyoming Wind 4020 PLD

BC 241 of 316 WW ET

F945670 WCR Miss Tradition 316

Schurrtop 5627

LT Chap's Lady 2170P

WCR Sir Tradition 066

WCR Miss Duke 120

CE	BW	WW	YW	MILK	MCE	TM	SC	CW	REA	FAT	MB
4.3	0.7	32	57	3	3.7	19	0.9	17	0.48	-0.009	0.05

- Granddaughter of Aschermann's 316, 066 daughter.
- This family has created many show winners and beef bulls!
- Great EPDs and a super nice individual.
- Beautiful udder, feet and 'kind.'
- Will sell open with 2 embryos by Baldrige Kojack 29K.
- Lot 18A, ET heifer by Baldrige Kojack 29K, born 8/19/09, tattoo 9626—want to be in the business long term? Tie into this heifer!

19 Fink Megan 7705 241 GM

Calved: 9/23/07 Polled EF1080207 Tattoo: 7705

WCR Sir Tradition 066

M6 Grid Maker 104 PET

EM633377 VCR Miss Mac IV 317

WCR Sir Tradition 4402

Ideal 809 45 of 25

WCR Sir FA Mac 2244

VCR Miss Duchess 113 PLD

LT Wyoming Wind 4020 PLD

BC 241 of 316 WW ET

F945670 WCR Miss Tradition 316

Schurrtop 5627

LT Chap's Lady 2170P

WCR Sir Tradition 066

WCR Miss Duke 120

CE	BW	WW	YW	MILK	MCE	TM	SC	CW	REA	FAT	MB
4.3	0.7	32	57	3	3.7	19	0.9	17	0.48	-0.009	0.05

- Our 'kind.'
- Really nice 1st-calf heifer, great udder and feet.
- Flushed—sells open with 2 embryos by Baldrige Kojack 29K.
- 7705 was shown by Allison Jones and stood 4th in a class of 15 at the 2008 Jr. National.
- Again, the Megan family from Aschermann Charolais!
- **Dam of Champion female, 2010 Kansas Jr. Charolais Show.**



Fink Megan 9623 7705 KJ, Champion heifer, 2010 KS Jr. Charolais Show. Dam is Lot 19

LADY FAMILY

20 Fink Lady 5783 2287 Pro

Calved: 9/09/05 Polled F1042332 Tattoo: 5783

LT Unlimited Ease 9108 BCR Polled Unlimited 003
PP Miss Shandy 214 R194
WCR Sir Fab Mac 809
LCR Miss Lindskov 7131

LT Easy Pro 1158 PLD

M620348 LT Lady Macbeth 8413 ETP

WCR Sir Tradition 066 WCR Sir Tradition 4402
Ideal 809 45 of 25

Finks Lady 2287 4X6066ET

F971749 Finks Perform 4x6D040PET JWK Impressive D040 ET
JWK Erma E216 ET

CE	BW	WW	YW	MILK	MCE	TM	SC	CW	REA	FAT	MB
8.5	-1.8	21	41	10	0.8	20	0.2	9	0.05	0.000	0.14

- Currently flushing. Sells open with 2 embryos by EC No Doubt.
- Dick and Chad Zhender, WDZ Charolais, MN, bought her dam in our 2007 sale. They bought another maternal sister to the dam in 2009 for \$3,100.
- Lot 20A, heifer calf, tattoo 9729, born 8/26/09 by Gain & Grade.
- 1 out of 4 females we brought in to flush in the fall of 2009 because of their production and udder quality.



Fink Lady 5783 2287 Pro, Lot 20

22 Fink Perform 8855 4909 GM ET

Calved: 7/26/08 Polled EF1102219 Tattoo: 8855

WCR Sir Tradition 066 WCR Sir Tradition 4402
Ideal 809 45 of 25
WCR Sir FA Mac 2244
VCR Miss Duchess 113 PLD

M6 Grid Maker 104 PET

EM633377 VCR Miss Mac IV 317

Eatons Predictor 9230 Eatons Performer 6709

Finks Perform 4909 ET

F1016005 Finks Perform 4X6D040PET JWK Impressive D040 ET
JWK Erma E216 ET

CE	BW	WW	YW	MILK	MCE	TM	SC	CW	REA	FAT	MB
8.0	-0.1	27	56	13	7.0	26	0.7	14	0.44	-0.003	0.11

- Direct daughter of 4909, the \$20,000-valued female selling to C5 Charolais, LA.
- Very nice Gridmaker, full sister to 7906, Lot 21, a current donor.
- Great EPDs—note calving ease and growth spread + carcass!
- Bred 5/27/10 to Fink 2250 of 3575 D040.

23 MF Lady 8876 4915 GM P

Calved: 8/11/08 Polled F1101553 Tattoo: 8876

WCR Sir Tradition 066 WCR Sir Tradition 4402
Ideal 809 45 of 25
WCR Sir FA Mac 2244
VCR Miss Duchess 113 PLD

M6 Grid Maker 104 PET

EM633377 VCR Miss Mac IV 317

LT Unlimited Ease 9108 BCR Polled Unlimited 003

Finks Lady 4915 18679 108ET

F1021944 Finks Lady 1867 4XBudet RC Budsmydad 225 polled
Finks Perform 4X6D040PET

CE	BW	WW	YW	MILK	MCE	TM	SC	CW	REA	FAT	MB
8.6	-0.3	35	61	12	2.7	29	0.7	20	0.39	-0.013	0.10

- Nice heifer with super high accuracy EPDs.
- Look at all of the proven bulls in this pedigree—she will work!
- She ratioed 117 at weaning!
- The grandam is the foundation for Megan's Lady family that she showed in Mississippi Jr. Nationals.
- 1867 has generated over \$50,000 in bull sales at Finks.
- Bred 1/16/10 to Fink 2250 of 3575 D040.

21 Fink Perform 7906 4909 GM ET

Calved: 8/04/07 Polled EF1084161 Tattoo: 7906

WCR Sir Tradition 066 WCR Sir Tradition 4402
Ideal 809 45 of 25
WCR Sir FA Mac 2244
VCR Miss Duchess 113 PLD

M6 Grid Maker 104 PET

EM633377 VCR Miss Mac IV 317

Eatons Predictor 9230 Eatons Performer 6709

Finks Perform 4909 ET

F1016005 Finks Perform 4X6D040PET JWK Impressive D040 ET
JWK Erma E216 ET

CE	BW	WW	YW	MILK	MCE	TM	SC	CW	REA	FAT	MB
8.0	-0.1	27	56	13	7.0	26	0.7	14	0.44	-0.003	0.11

- Currently flushing. Sells open with 2 embryos by Baldrige Kojack 29K.
- The Kojack heifer selling is a projection of what this female can do.
- 4X6, the grandam, produced over \$55,000 in bull sales for Finks.
- These kind build programs!
- Lot 21A, a super Baldrige Kojack 29K daughter, tattoo 9619, born 8/12/09, polled.

24 Fink Lady 8901 6814 Spur P

Calved: 8/05/08 Polled F1101590 Tattoo: 8901

Eatons Predictor 9230 Eatons Performer 6709
Eatons Miss Big Sandy
LT Wyoming Wind 4020 PLD
LT Unlimited Maiden 1131

LT Western Spur 2061 PLD

M645786 LT Maiden's Breeze 8242P

M6 Gain & Grade 927 Pld WCR Sir Duke 761

Fink Lady 6814 3832 GG TW

F1063240 Finks Lady 3832 4X6066ET WCR Sir Tradition 066
Finks Perform 4XD040PET

CE	BW	WW	YW	MILK	MCE	TM	SC	CW	REA	FAT	MB
1.1	0.1	31	55	2	2.9	17	1.0	9	0.13	-0.001	0.13

- Western Spur and Gain & Grade are noted for great udders and feet — this female should be no exception.
- 8901 ratioed 105 at weaning.
- High accuracy sires throughout the pedigree.
- Bred 12/14/09 to Fink 2250 of 3575 D040.

LADY FAMILY

25 MF Lady 8884 5757 Spur P

Calved: 7/27/08 Polled F1101555 Tattoo: 8884

Eatons Predictor 9230 Eatons Performer 6709

LT Western Spur 2061 PLD

M645786 LT Maiden's Breeze 8242P

Eatons Miss Big Sandy

LT Wyoming Wind 4020 PLD

LT Unlimited Maiden 1131

LT Unlimited Ease 9108

BCR Polled Unlimited 003

Finks Lady 5757 1867 9108 ET

F1041223 Finks Lady 1867 4X6Budet

PP Miss Shandy 214 R194

RC Budsmydad 225 Polled

Finks Perform 4X6D040PET

CE	BW	WW	YW	MILK	MCE	TM	SC	CW	REA	FAT	MB
5.6	-1.3	23	39	2	3.7	13	0.9	10	0.17	0.017	0.08

- Bull customers watching birthweight? This female may fit the bill. -1.3 BW and 5.6 calving ease.
- Grandam is Megan's 1867 Bud daughter that did very well in the show ring and breeding pasture. Now owned by Riverdale Charolais, MO.
- Her dam, 4X6 was a \$20,000-valued female for us.
- Bred approximately 2/20/10 to Fink 7706 of 5651 BY.

28 Fink Lady 6858 2287 GG

Calved: 8/24/06 Polled F1063230 Tattoo: 6858

WCR Sir Duke 961

BR Duke 261

M6 Gain & Grade 927 PLD

M511007

M6 Miss Mac 4140

WCR Miss Tradition 8335

HCR Mac 9176 Polled

M6 Miss Woo 262

WCR Sir Tradition 066

WCR Sir Tradition 4402

Finks Lady 2287 4X6066ET

F971749

Finks Perform 4X6D040PET

Ideal 809 45 of 25

JWK Impressive D040 ET

JWK Erma E216 ET

CE	BW	WW	YW	MILK	MCE	TM	SC	CW	REA	FAT	MB
4.4	-0.5	28	49	7	3.1	21	0.8	9	-0.08	-0.030	0.18

- Great udder.
- Full sisters have sold to Mathew Brent, KS; WDW Charolais, MN; Hargrave Charolais, KS; Riverdale Charolais, MO.
- Flushed during fall 2009 & spring 2010.
- Breeding information announced sale day.



Fink Lady 6858 2287 GG, Lot 28

26 MF Lady 7713 3829 GG

Calved: 8/31/07 Polled F1084435 Tattoo: 7713

WCR Sir Duke 961

BR Duke 261

M6 Gain & Grade 927 PLD

M511007

M6 Miss Mac 4140

WCR Miss Tradition 8335

HCR Mac 9176 Polled

M6 Miss Woo 262

WCR Sir Tradition 066

WCR Sir Tradition 4402

Finks Lady 3829 4X6066ET

F994254

Finks Perform 4X6D040PET

Ideal 809 45 of 25

JWK Impressive D040 ET

JWK Erma E216 ET

CE	BW	WW	YW	MILK	MCE	TM	SC	CW	REA	FAT	MB
5.3	-0.4	37	62	5	4.1	24	0.8	20	0.05	-0.033	0.22

- Full sisters in blood to this female sold in last year's sale to Tom Greco, KS, and John Hardy, IA.
- Nice udder, typical Gain & Grade female.
- Our Gain & Grade females have made excellent cows.
- Young female—excellent replacement for an older model.
- Lot 26A, bull calf, born 3/18/10 by M6 Gridmaker 104, tattoo 04.
- Breeding information will be announced sale day.

27 Fink Lady 7785 5797 Spur

Calved: 7/27/07 Polled F1084593 Tattoo: 7785

Eatons Predictor 9230

Eatons Performer 6709

LT Western Spur 2061 PLD

M645786

LT Maiden's Breeze 8242P

Eatons Miss Big Sandy

LT Wyoming Wind 4020 PLD

LT Unlimited Maiden 1131

LT Wyoming Wind 4020 PLD

Schurrtop 5627

Fink Lady 5797 1867 WW ET

F1041229

Finks Lady 1867 4X6Budet

LT Chaps Lady 2170P

RC Budsmydad 225 Polled

Finks Perform 4X6D040PET

CE	BW	WW	YW	MILK	MCE	TM	SC	CW	REA	FAT	MB
3.8	-0.7	22	40	-3	5.9	8	1.2	8	0.21	0.020	0.07

- Young Spur daughter out of a Wind x Lady 1867 female!
- 1867 was Megan's show female in 2003 and was very successful.
- 1867 has also produced over \$50,000 in bull sales and her dam has also produced over \$50,000 in bull sales.
- Bred 5/29/10 to M6 Gridmaker 104.

29 Fink Lady 6856 2284 GG

Calved: 8/25/06 Polled F1063228 Tattoo: 6856

WCR Sir Duke 961

BR Duke 261

M6 Gain & Grade 927 PLD

M511007

M6 Miss Mac 4140

WCR Miss Tradition 8335

HCR Mac 9176 Polled

M6 Miss Woo 262

WCR Sir Tradition 066

WCR Sir Tradition 4402

Finks Lady 2284 4X6066ET

F971746

Finks Perform 4X6D040PET

Ideal 809 45 of 25

JWK Impressive D040 ET

JWK Erma E216 ET

CE	BW	WW	YW	MILK	MCE	TM	SC	CW	REA	FAT	MB
4.3	-0.2	29	49	5	3.0	20	0.8	8	-0.20	-0.035	0.24

- Full sisters have sold to Tom Greco, KS, and John Hardy, IA.
- Gain & Grade females have nice udders and great feet.
- Another young spring-calving female to replace older models.
- Breeding information announced sale day.

LADY FAMILY

30 Fink Lady 6859 2288 GG

Calved: 8/25/06 Polled F1063231 Tattoo: 6859

WCR Sir Duke 961

BR Duke 261

M6 Gain & Grade 927 PLD

WCR Miss Tradition 8335

M511007

M6 Miss Mac 4140

HCR Mac 9176 Polled

M6 Miss Woo 262

WCR Sir Tradition 066

WCR Sir Tradition 4402

Finks Lady 2288 4X6066ET

Ideal 809 45 of 25

F971750

Finks Perform 4X6D040PET

JWK Impressive D040 ET

JWK Erma E216 ET

CE	BW	WW	YW	MILK	MCE	TM	SC	CW	REA	FAT	MB
4.6	-0.8	26	45	6	3.4	19	0.8	8	-0.19	-0.033	0.26

- Full sister in blood to previous 3 females.
- The grandam, 4X6, was our foundation Lady female.
- 4X6 after serving as a donor for Finks—went to Everett and Julie Shepherd, IA; and Lance Bruna, KS, as a donor.
- Bred approximately 12/05/09 to Fink 8716 of 10224 T.Wind.



Fink Lady 6859 2288 GG, Lot 30

32 Fink Miss 5842 2282 ALL

Calved: 11/18/05 Polled F1039306 Tattoo: 5842

Sparrows Alliance 513G

LT Wyoming Wind 4020 Pld

LT Alliance 9054 TW P

Chardel Paradise 513E

M501690

LT Prairie Sun 6144 Pld

Schurrtop 5627

LT Prairie Maiden 8035

WCR Sir Tradition 066

WCR Sir Tradition 4402

Finks Lady 2282 4X6066ET

Ideal 809 45 of 25

F971744

Finks Perform 4X6D040PET

JWK Impressive D040 ET

JWK Erma E216 ET

CE	BW	WW	YW	MILK	MCE	TM	SC	CW	REA	FAT	MB
7.0	-1.3	18	33	-3	5.0	6	n/a	n/a	n/a	n/a	n/a

- Super pair—fantastic udder on this female and her Gain & Grade heifer will be no different.
- Calving ease of 7 and still nice growth EPDs.
- Really nice pair.
- Lot 32A, heifer calf, tattoo 9731, born 8/12/09, by Gain & Grade 927.
- Bred approximately 12/05/09 to Fink 716 of 10224 T.Wind.



Fink Miss 5842 2282 ALL, Lot 32

31 Fink Lady 6818 3838 GG

Calved: 9/03/06 Polled F1063242 Tattoo: 6818

WCR Sir Duke 961

BR Duke 261

M6 Gain & Grade 927 PLD

WCR Miss Tradition 8335

M511007

M6 Miss Mac 4140

HCR Mac 9176 Polled

M6 Miss Woo 262

WCR Sir Tradition 066

WCR Sir Tradition 4402

Finks Lady 3838 4X6066ET

Ideal 809 45 of 25

F994233

Finks Perform 4X6D040PET

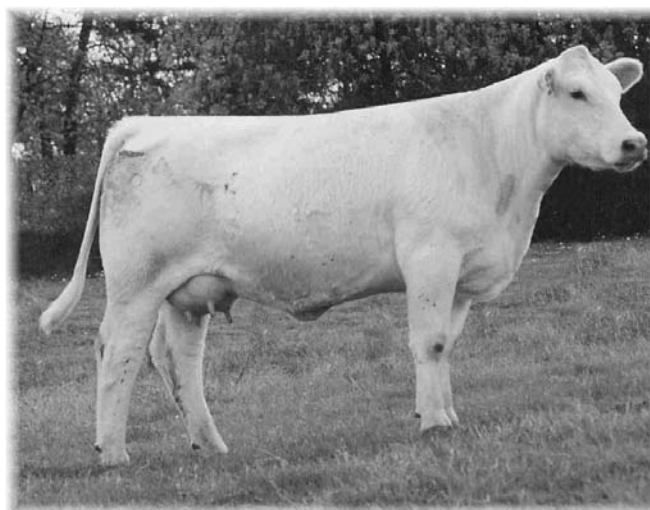
JWK Impressive D040 ET

JWK Erma E216 ET

CE	BW	WW	YW	MILK	MCE	TM	SC	CW	REA	FAT	MB
0.7	1.3	33	54	3	1.1	20	0.8	10	-0.12	-0.033	0.20

- Full sister in blood to previous 4 females.
- Want to get a start in purebred Charolais? This would be a great group to start with.
- Proven genetics and proven programs are what its all about.
- Bred approximately 12/07/09 to Fink 8716 of 10224 T.Wind.

PERFECTION FAMILY



M6 MS E46's Duke 248 PET

PERFECTION FAMILY

33 Fink Perfection 7740 248 GM ET

Calved: 8/25/07 Polled EF1084121 Tattoo: 7740
WCR Sir Tradition 066 WCR Sir Tradition 4402

M6 Grid Maker 104 PET

EM633377 VCR Miss Mac IV 317

LHD Cigar E46

M6 MS E46's Duke 248 PET

F967918 M6 MS Duke 009 PLD

Ideal 809 45 of 25
WCR Sir FA Mac 2244
VCR Miss Duchess 113 PLD
LHD Mr Perfect Y416
LHD Ms Classic Bell X613
VCR Sir Duke 914 PLD
Moore's MS Maker 7410 P

CE	BW	WW	YW	MILK	MCE	TM	SC	CW	REA	FAT	MB
4.2	1.8	37	67	10	4.5	28	0.8	18	0.52	-0.026	-0.02

- **Direct daughter of 248, the \$16,000 donor for Finks, M6, Double H, Bruna, & C5.**
- 3 full sisters sold last year to Larry Wakefield, MN; WDC Charolais, MN; and Dave Nichols, KS, for a \$3,600 average.
- Lot 33A, the Kojack daughter of 7740 will attract breeders reaching for proven genetics by hard, if not impossible, to obtain.
- Lot 33A, embryo heifer calf, tattoo 9544, polled, born 9/01/09 by Baldrige Kojack 29K.
- Bred 5/27/10 to M6 Gain & Grade 927.

34 Fink Perfection 9543 7738 BG

Calved: 7/30/09 Polled EF1117090 Tattoo: 9543
LT Assertion 1277 P Eatons Assert 9171

LT Bluegrass 4017 P

M686569 LT Pearl's Breeze 2236 P

M6 Gridmaker 104 PET

Fink Perfection 7738 248 GM ET

EF1084119 M6 MS E46's Duke 248 PET

LT Alli's Class 9140 P
LT Wyoming Wind 4020 PLD
LT Unlimited Pearl 7053 P

WCR Sir Tradition 066
VCR Miss Mac IV 317
LHD Cigar E46
M6 MS Duke 009 PLD

CE	BW	WW	YW	MILK	MCE	TM	SC	CW	REA	FAT	MB
6.8	-0.3	27	53	8	5.0	21	0.8	9	0.36	-0.001	0.04

- Take a hard look at this female, pedigree & kind!
- This sale has many young females, bred right, but yet hard genetics to get.
- Bluegrass—Gridmaker—248—value long term!
- Feature type female in many sales!
- Open and ready to breed this fall!

35 Fink 9624 7741 WS

Calved: 8/09/09 Horned EF1117082 Tattoo: 9624
Eatons Predictor 9230 Eatons Performer 6709

LT Western Spur 2061 PLD

M645786 LT Maiden's Breeze 8242P

M6 Gridmaker 104 PET

Fink Perfection 7741 248 GM ET

EF1084123 M6 MS E46's Duke 248 PET

Eatons Miss Big Sandy
LT Wyoming Wind 4020 PLD
LT Unlimited Maiden 1131

WCR Sir Tradition 066
VCR Miss Mac IV 317
LHD Cigar E46
M6 MS Duke 009 PLD

CE	BW	WW	YW	MILK	MCE	TM	SC	CW	REA	FAT	MB
2.1	0.4	30	55	3	4.7	18	1.1	12	0.43	0.001	0.02

- Full sister in blood to following two yearling heifers.
- Dam sold to Larry Wakefield, MN, in last year's sale for \$4,300.
- Another powerful Spur—Gridmaker—248 cross.
- Ready to breed this fall!

36 Fink 9621 7739 WS

Calved: 8/05/09 Polled EF1117080 Tattoo: 9621

37 Fink 9622 7739 WS

Calved: 8/09/09 Polled EF1117081 Tattoo: 9622
Eatons Predictor 9230 Eatons Performer 6709

LT Western Spur 2061 PLD

M645786 LT Maiden's Breeze 8242P

M6 Gridmaker 104 PET

Fink Perfection 7739 248 GM ET

EF1084120 M6 MS E46's Duke 248 PET

LT Wyoming Wind 4020 PLD
LT Unlimited Maiden 1131

WCR Sir Tradition 066
VCR Miss Mac IV 317
LHD Cigar E46
M6 MS Duke 009 PLD

CE	BW	WW	YW	MILK	MCE	TM	SC	CW	REA	FAT	MB
2.1	0.4	30	55	3	4.7	18	1.1	12	0.43	0.001	0.02

- **Wait until you see these 2 Spur daughters out of the female Dave Nichols bought last year! Talk about power—maybe as powerful Spurs that can be found.**
- Again, 248 \$16,000 female used as a donor in many programs and the dam of 2 bulls that sold for \$170,000 and \$50,000 in a past M6 sale.
- Both ready to breed this fall!

38 Fink Perfection 7755 248 761 ER

Calved: 8/25/07 Polled EF1084160 Tattoo: 7755
BR Duke 261 BR Duke 295

WCR Sir Duke 761

M269828 WCR Miss Tradition 8335

LHD Cigar E46

M6 MS E46's Duke 248 PET

F967918 M6 MS Duke 009 PLD

BR Ann 14
ABC Wienks Tradition
WCR Miss Mac 141

LHD Mr Perfect Y416
LHD Ms Classic Bell X613
VCR Sir Duke 914 PLD
Moore's MS Maker 7410 P

CE	BW	WW	YW	MILK	MCE	TM	SC	CW	REA	FAT	MB
0.5	2.2	41	71	7	42.4	28	1.1	18	0.18	-0.021	-0.02

- Another unique pedigree and genetics in two packages (1) direct 761 daughter and 248 (2) Kojack heifer out of that mating.
- Try getting or finding semen on 761 or Kojack, then out of 248 herself!
- Lot 38A, heifer calf, tattoo 9548, born 8/08/09, polled, by Baldrige Kojack 29K.
- Bred 5/28/10 to Fink 2250 of 3575 D040.

Attention Buyers—Potential Bull Sales

Anyone that purchases 10 females or more in this sale will be eligible to JOINTLY merchandise bulls with Finks if they desire (meeting requirements).

Purchasers of less than 10 head will be eligible for bull sales TO FINKS (meeting requirements).

For more details, please call or e-mail and we will send you an information sheet.



PERFECTION FAMILY

39 Fink Perfection 8903 6840SPUR P

Calved: 8/11/08 Polled F1101593 Tattoo: 8903
 Eatons Predictor 9230 Eatons Performer 6709

LT Western Spur 2061 PLD
 M645786 LT Maiden's Breeze 8242P
 LT Wyoming Wind 4020 PLD
 LT Unlimited Maiden 1131

WCR Sir Duke 761 BR Duke 261
Fink Perfection 6840 248 761
 EF106+3069 M6 Ms E46's Duke 258 PET
 WCR Miss Tradition 8335
 LHD Cigar E46
 M6 Ms Duke 009 Pld

CE	BW	WW	YW	MILK	MCE	TM	SC	CW	REA	FAT	MB
0.3	0.5	26	48	1	3.6	15	1.2	12	0.27	0.004	0.02

- Dam is a full sister to previous lot.
- Polled, powerhouse Spur daughter.
- Again 761 x 248—very few around!
- Bred 12/15/09 to LT Easy Pro 1158.

VANESSA FAMILY

40 Fink Vanessa 5807 3551 9176

Calved: 8/28/05 Polled F1040926 Tattoo:5807
 BCR Polled Unlimited 003 FZ Mighty Mac Polled 828

LT Unlimited Ease 9108
 M301930 PP Miss Shandy 214 R194
 Mr Bonaparte 194 Twin
 PP Shannas 54 BLF

WCR Sir Tradition 066 WCR Sir Tradition 4402
TSF Vanessa 3551 PLD ET
 F948556 JWK Vanessa G269 ET
 Ideal 809 45 of 25
 Skymont Ease 2078
 JWK Vanessa D029 ET

CE	BW	WW	YW	MILK	MCE	TM	SC	CW	REA	FAT	MB
6.8	-0.5	25	38	7	1.4	19	0.5	12	0.18	0.000	0.07

- This female scanned a 4.24 for IMF and a 13.0 ribeye.
- The **most massive 9108** anywhere, and she comes by it naturally, the grandam was massive in her depth and kind.
- Sheppard Charolais, KS, own the dam—and have had great success flushing her. The offspring are really nice also.
- After several flushes, we had trouble breeding this female back and ended up putting an Angus embryo in her (we did not have any Charolais available).
- Lot 40A, heifer, tattoo 9592, born 9/05/09, by LT Easy Blend.
- Completely guaranteed to be fertile—just too much flushing!
- Co-owned with Sheppard Charolais, KS.
- Bred carrying an Angus embryo by Cortachy Boy x 6523 (24) x Bonnie family).
- Selling full interest and full possession.



Finks Vanessa 5807 3551 9176, Lot 40

ROCKY FAMILY

41 MF Rocky 9536 6900 BL

Calved: 8/10/09 Polled EF1117102 Tattoo: 9536
 LT Unlimited Ease 9108 BCR Polled Unlimited 003

LT Easy Blend 5125 Pld
 M705113 LT Brenda 1014 PLD
 PP Shandy 214 R194
 WCR Prime Cut 764 Pld
 LT Brenda's Breeze 9207P

M6 Gain & Grade 927 Pld WCR Sir Duke 761
MF Rocky 6900 K45 GG
 EF1063217 MCF MS Rocky K45 P ET
 M6 Miss Mac 4140
 SCM Double Joe D96
 NF Vedvee Cow E516

CE	BW	WW	YW	MILK	MCE	TM	SC	CW	REA	FAT	MB
4.4	0.1	37	64	4	0.5	23	0.8	28	0.06	-0.002	0.15

- **Really nice LT Easy Blend daughter out of a real nice Gain & Grade x K45 dam.**
- A full sister to the dam, 6900, was a favorite of ours that sold as a bred heifer to Broberg Charolais, NE, in our 2009 sale.
- Breeders wanting solid genetics, proven and past performance want to look this female up.
- Ready to breed this fall!

42 MF Rocky 9535 6894 BL

Calved: 8/04/09 Polled EF1117101 Tattoo: 9535
 LT Unlimited Ease 9108 BCR Polled Unlimited 003

LT Easy Blend 5125 Pld
 M705113 LT Brenda 1014 PLD
 PP Shandy 214 R194
 WCR Prime Cut 764 Pld
 LT Brenda's Breeze 9207P

M6 Gain & Grade 927 Pld WCR Sir Duke 761
MF Rocky 6894 K45 GG
 EF1063212 MCF MS Rocky K45 P ET
 M6 Miss Mac 4140
 SCM Double Joe D96
 NF Vedvee Cow E516

CE	BW	WW	YW	MILK	MCE	TM	SC	CW	REA	FAT	MB
4.4	0.2	38	66	5	0.5	24	0.8	28	0.06	-0.002	0.15

- Full sister in blood to the previous female.
- We are only offering a couple of Easy Blend daughters in this sale as sale attractions.
- The Rocky family has been very good to Megan.
- Ready to breed this fall!

43 MF Rocky 8875 4901 LD P

Calved: 8/30/08 Polled F1100213 Tattoo: 8875
 Eatons Candidate 9177 Eatons Continuation 7094

Eatons Leader 2233 P
 M652217 Eatons Rhodora 9506
 Eatons Miss Falls 3639
 Eatons Celebration
 Eatons Miss Rhodora 7518

WCR Sir Tradition 066 WCR Sir Tradition 4402
Finks Rocky 4901K45066ET
 F1020265 MCF MS Rocky K45 P ET
 Ideal 809 45 of 25
 SCM Double Joe D96
 NF Vedvee Cow E516

CE	BW	WW	YW	MILK	MCE	TM	SC	CW	REA	FAT	MB
5.5	-0.2	25	51	-7	6.6	6	0.6	11	0.31	0.024	-0.03

- Full sisters to the dam have sold to Maurice Rohr, Smoky Hill Charolais, KS, for \$3,200; Tom Greco, KS, \$2,000, in past sales.
- K45, the grandma generated \$42,000 in bull sales at Finks and serves as a foundation Rocky for Ibach Charolais, NE.
- Bred 12/13/09 to LT Easy Pro 1158.

ROCKY FAMILY

44 MF Rocky 8914 6897 Spur P

Calved: 7/27/08 Polled F1101557 Tattoo: 8914
 Eatons Predictor 9230 Eatons Performer 6709
LT Western Spur 2061 PLD
 M645786 LT Maiden's Breeze 8242P LT Wyoming Wind 4020 PLD
 LT Unlimited Maiden 1131
 M6 Gain & Grade 927 Pld WCR Sir Duke 761
MF Rocky 6897 K45 GG
 EF1063214 MCF MS Rocky K45 P ET SCM Double Joe D96
 NF Vedvee Cow E516

CE	BW	WW	YW	MILK	MCE	TM	SC	CW	REA	FAT	MB
2.0	-1.0	26	49	1	2.8	14	1.0	10	0.12	0.005	0.13

- Expect great feet and udders on this female—items we watch as closely as EPDs and kind!
- The Gridmaker baby she is carrying should be an excellent cross on this female.
- Bred 12/13/09 to M6 Gridmaker 104.

45 Fink Rocky 7760 4901 GM

Calved: 7/29/07 Polled F1084495 Tattoo: 7760
 WCR Sir Tradition 066 WCR Sir Tradition 4402
M6 Grid Maker 104 PET
 EM633377 VCR Miss Mac IV 317 WCR Sir FA Mac 2244
 VCR Miss Duchess 113 PLD
 WCR Sir Tradition 066 WCR Sir Tradition 4402
Finks Rocky 4901 K45066ET
 F1020265 MCF MS Rocky K45 P ET SCM Double Joe D96
 NF Vedvee Cow E516

CE	BW	WW	YW	MILK	MCE	TM	SC	CW	REA	FAT	MB
4.2	0.3	29	57	9	0.9	23	0.6	16	0.50	-0.024	0.07

- This female's 1st calf weaned at 738# actual in a very tough winter.
- Full sister sold to Smoky Hill Charolais, KS, for \$3,200.
- Great EPDs—proven genetics.
- Bred 5/27/10 to M6 Gain & Grade 927.

46 Fink Rocky 7756 4881 GM

Calved: 7/23/07 Polled F1084494 Tattoo: 7756
 WCR Sir Tradition 066 WCR Sir Tradition 4402
M6 Grid Maker 104 PET
 EM633377 VCR Miss Mac IV 317 WCR Sir FA Mac 2244
 VCR Miss Duchess 113 PLD
 WCR Sir Tradition 066 WCR Sir Tradition 4402
Finks Rocky 4881 K45066ET
 F1020265 MCF MS Rocky K45 P ET SCM Double Joe D96
 NF Vedvee Cow E516

CE	BW	WW	YW	MILK	MCE	TM	SC	CW	REA	FAT	MB
4.2	0.2	28	56	8	0.9	22	0.6	16	0.49	-0.026	0.10

- This sale will have a high percent of young females that will have a lot to offer. If you need to trade in some older females these kind offer an opportunity to get proven genetics and a young cow base.
- Lot 46A, bull calf, tattoo 010, born 4/18/10 by Fink 7706 of 5651 BY.
- Bred 5/27/10 to M6 Gain & Grade 927.

47 Finks Ms Rocky 4962

Calved: 11/08/04 Polled F1015181 Tattoo: 4962
 BCR Polled Unlimited 003 FZ Mighty Mac Polled 828
LT Unlimited Ease 9108
 M301930 PP Miss Shandy 214 R194 Miss Camelot
 Mr Bonaparte 194 Twin
 PP Shannas 54 Blf
 SCM Double Joe D96 SCM Joe Montana JR B227
MCF Ms Rocky K45 P ET
 F912036 NF Vedvee Cow E516 SCM Miss Montana B197
 VCR Sir Duke 914 Pld
 NF Vedvee Cow E516 Daughter Twin

CE	BW	WW	YW	MILK	MCE	TM	SC	CW	REA	FAT	MB
9.6	-3.4	15	24	-5	0.6	2	0.7	9	0.05	0.001	0.07

- The only full sister to this female that has been offered sold for \$3,000 to Smoky Hill Charolais, KS, in 2006 sale.
- 9108 still used at Lindskov-Thiel Ranch in SD, as Brent will tell you, for many reasons.
- 9108 still holds the Charolais semen selling record at ABS.
- Lot 47A, heifer calf, tattoo 9732, born 8/10/09, polled, by M6 Gridmaker 104.
- Bred approximately 12/07/09 to Fink 8716 of 10224 T.Wind.



Finks Ms Rocky 4962, Lot 47

48 Fink Star 8899 6812 Pro P

Calved: 8/07/08 Polled F1101588 Tattoo: 8899
 LT Unlimited Ease 9108 BCR Polled Unlimited 003
LT Easy Pro 1158 PLD
 M620348 LT Lady Macbeth 8413 ETP PP Miss Shandy 214 R194
 WCR Sir Fab Mac 809
 LCR Miss Lindskov 7131
 M6 Gain & Grade 927 PLD WCR Sir Duke 761
Fink Star 6812 3824 GG
 F1063238 Finks Star 3824E516066ET M6 Miss Mac 4140
 WCR Sir Tradition 066
 NF Vedvee Cow E516

CE	BW	WW	YW	MILK	MCE	TM	SC	CW	REA	FAT	MB
6.3	-1.3	32	54	14	-3.2	30	0.3	14	-0.06	-0.005	0.29

- Note the grandam is a Dam of Distinction.
- This heifer ratioed 108 at weaning.
- Note marbling EPD on this female with high accuracy sires represented.
- Bred approximately 2/20/10 to Fink 7706 of 5651 BY.

SWEGLE CREEK OLYMPIA FAMILY

Megan has decided college is more expensive than she had thought. This sale, she will be selling 8 direct daughters of “Kisses” (Swegle Creek Olympia).



“Kisses” - 2005 Jr. National Reserve Grand Champion

Kisses' - Progeny Wins

**2008 - MF Chexie 7803
Jr. National Reserve Division by Spur
Champion, Kansas State Fair
Champion, Kansas Jr. Show**

**2008 - 2009 - MF Kisses 7701 by Suspect
Class winner 2008 Jr. National
Grand Champion Bred & Owned, 2009 Jr. National
Senior Champion Owned, 2009 Jr. National**

**2008 - 2009 - MF Kisses 7702 by Thundering Wind
5th in class, 2008 Jr. National
Reserve Senior Champion, Owned, 2009 Jr. National**

**2008 Jr. Nationals
3rd & 5th in class by Madrid**

**2009 Jr. Nationals
2nd in class by Spur
4th in class by Suspect**

**Currently daughters and sons by Bluegrass
are being shown.**



MF Chexie 7803, Reserve Division 2008 Jr. National.



MF Kisses 7702, Reserve Senior Champion, 2009 Jr. National

49 MF Kisses 9714 IJ
Calved: 4/12/09 Polled EF1110770 Tattoo: 9714

50 MF Kisses 9708 IJ
Calved: 4/15/09 Polled EF1110763 Tattoo: 9708

51 MF Kisses 9715 IJ
Calved: 4/13/09 Polled EF1110772 Tattoo: 9715

52 MF Kisses 9709 IJ
Calved: 4/06/09 Polled EF1110766 Tattoo: 9709
PF Impressed 620 P ET JVK Impressive D040 ET
PFinfinite Justice 1001 PET Miss KC Crocus 904 Poll
M613588 VCR Miss Duchess 351 Pld VCR Sir Duke 914 Pld
VCR Miss Macsperfection
LT Wyoming Wind 4020 Pld Schurrtop 5627
Swegle Creek Olympia ET LT Chaps Lady 2170P
F998282 Swegle Creek Picabo 801 Skymont Ease 2078
BR-SC Kirsten 2KR2 ET

CE	BW	VV	YW	MILK	MCE	TM	SC	CW	REA	FAT	MB
5.3	1.0	19	28	-1	5.9	9	0.7	6	0.05	0.014	0.14

- 9714 bred 5/27/10 to Fink 2250 of 3575 D040.
- 9708 bred 5/27/10 to Fink 2250 of 3575 D040.
- 9715 bred 5/27/10 to Fink 2250 of 3575 D040.
- 9709 bred 5/27/10 to M6 Gridmaker 104.

SWEGLE CREEK OLYMPIA FAMILY

53 MF Kisses 9725 BG

Calved: 4/10/09 Polled EF1110782 Tattoo: 9725

LT Assertion 1277 P

Eatons Assert 9171

LT Bluegrass 4017 P

LT Alli's Class 9140 P

M686569

LT Pearl's Breeze 2236 P

LT Wyoming Wind 4020 PLD

LT Unlimited Pearl 7053 P

LT Wyoming Wind 4020 Pld

Schurrtop 5627

Swegle Creek Olympia ET

LT Chaps Lady 2170P

F998282

Swegle Creek Picabo 801

Skymont Ease 2078

BR-SC Kirsten 2KR2 ET

CE	BW	VV	YW	MILK	MCE	TM	SC	CW	REA	FAT	MB
5.8	-0.6	20	39	2	4.7	12	0.9	4	0.18	0.018	0.05

- Full sister to Champion Bred & Owned & Champion Bull, 2010 Kansas Jr. Charolais Show.
- Bred 5/27/10 to Fink 2250 of 3575 D040.



**Champion bull, 2010 Kansas Jr. Charolais Show.
Kisses x Bluegrass**

54 MF Kisses 9596 411 Prec

Calved: 9/14/09 Polled EF1117098 Tattoo: 9596

55 MF Kisses 9597 411 Prec

Calved: 9/16/09 Polled EF1117099 Tattoo: 9597

56 MF Kisses 9598 411 Prec

Calved: 9/09/09 Polled EF1117100 Tattoo: 9598

Thomas Redneck 2609M

Thomas Oahe Wind 0772 ET P

WDZLPCPrecision4032PidET

TR MS AJ 9664

M683276

SCC Miss Mary G009 P ET

4-L Unlimited YL06 Pld

Ms Serendipity EX 15

LT Wyoming Wind 4020 Pld

Schurrtop 5627

Swegle Creek Olympia ET

LT Chaps Lady 2170P

F998282

Swegle Creek Picabo 801

Skymont Ease 2078

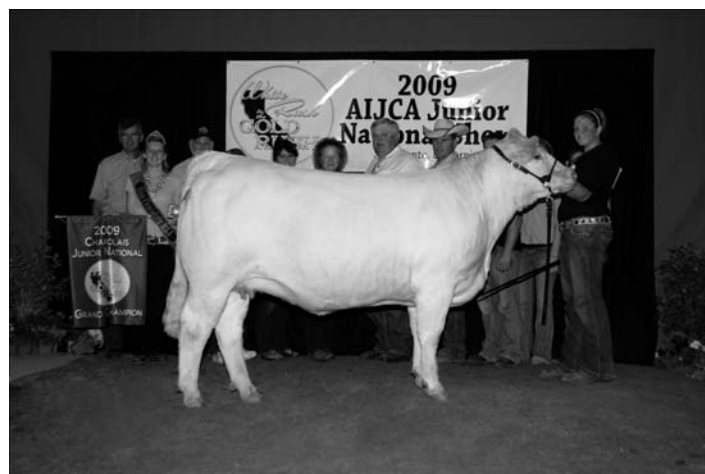
BR-SC Kirsten 2KR2 ET

CE	BW	VV	YW	MILK	MCE	TM	SC	CW	REA	FAT	MB
1.9	1.8	31	43	-4	3.4	11	n/a	15	0.15	0.001	-0.12

- Ready to breed this fall!



**Champion bred and owned, 2010 Kansas Jr.
Charolais Show. Kisses x Bluegrass**



**MF Kisses 7701, Grand Champion Bred & Owned,
2009 National Jr. Charolais Show.**



**Reserve Champion Bred & Owned, 2010 Kansas Jr.
Charolais Show. MF Kisses 7702 x Stealth—They
breed on!**

ROCKY FAMILY

57 Fink Star 5791 3826 9176

Calved: 9/03/05 Horned F1040934 Tattoo: 5791
 FZ Mighty Mac Polled 828 FZ Mac 236 Polled
HCR Mac 9176 Polled Miss J.E.B. 40
 M301627 Lady HCR Mac 8063 FZ Mac 236 Polled
 Lady HCR Bobino 571 W
 WCR Sir Tradition 066 WCR Sir Tradition 4402
Finks Star 3826E516066ET Ideal 809 45 of 25
 F1040934 NF Vedvee Cow E516 VCR Sir Duke 914 Pld
 NF LT Ease Daughter Twin

CE	BW	WW	YW	MILK	MCE	TM	SC	CW	REA	FAT	MB
-6.3	3.2	35	47	10	-6.4	28	0.6	15	0.24	-0.027	0.20

- Bred to calve to 2250, the Raile Charolais herdsire that has made his mark in the industry.
- This female weaned with a 107 ratio.
- Back to the foundation E516 x 914 daughter that started our Rocky female line.
- Breeding information will be announced sale day.



Fink Star 5791 3826 9176, Lot 57

VANITY FAMILY

58 Fink Vanity 7778 5770 GM

Calved: 7/23/07 Polled F1084463 Tattoo: 7778
 WCR Sir Tradition 066 WCR Sir Tradition 4402
M6 Grid Maker 104 PET Ideal 809 45 of 25
 EM633377 VCR Miss Mac IV 317 WCR Sir FA Mac 2244
 VCR Miss Duchess 113 PLD
 LT Unlimited Ease 9108 BCR Polled Unlimited 003
Fink Vanity 5770 8140 9108 ET PP Miss Shandy 214 R194
 F1041190 Miss HCR Mac 8140 BBCR Sir Mac 112 P/S
 Miss HCR Vanity 5104 TW

CE	BW	WW	YW	MILK	MCE	TM	SC	CW	REA	FAT	MB
6.1	-0.4	30	53	13	0.5	28	0.6	20	0.40	-0.007	0.08

- Currently flushing, sells open with 2 embryos by Baldrige Kojack 29K.
- 1 of 4 females selected in the fall of 2009 to bring into our ET program, based on 'kind,' udder, feet, pedigree, and heritage proven at Fink Beef Genetics.
- The grandam was our pick from Dave Hubert in 2003 for \$8,500—she has not disappointed us.
- The dam sold last year to Tom Greco, KS; and her calf to Hannah Harris, KS.
- Lot 58A, heifer calf, tattoo 9632, born 8/15/09 by Baldrige Kojack 29K. What a future she has!



Fink Vanity 7778 5770 GM, Lot 58

59 Fink Vanity 7789 5771 GM

Calved: 7/23/07 Polled F1084464 Tattoo: 7778
 WCR Sir Tradition 066 WCR Sir Tradition 4402
M6 Grid Maker 104 PET Ideal 809 45 of 25
 EM633377 VCR Miss Mac IV 317 WCR Sir FA Mac 2244
 VCR Miss Duchess 113 PLD
 LT Unlimited Ease 9108 BCR Polled Unlimited 003
Fink Vanity 5771 8140 9108 ET PP Miss Shandy 214 R194
 F1041192 Miss HCR Mac 8140 BBCR Sir Mac 112 P/S
 Miss HCR Vanity 5104 TW

CE	BW	WW	YW	MILK	MCE	TM	SC	CW	REA	FAT	MB
6.1	-0.3	30	53	14	0.5	29	0.6	20	0.40	-0.007	0.08

- Currently flushing, sells open with 2 embryos by Baldrige Kojack 29K.
- Full sister in blood to the previous lot, 7778.
- Retaining her 2009 bull calf for our bull sale.
- 1 of 4 females out of our entire herd selected in fall 2009 to flush.
- The entire Fink program is built on proven sires, with balanced EPDs that benefit our commercial customers.



Fink Vanity 7789 5771 GM, Lot 59

VANITY FAMILY

60 Fink Vanity 964I 8140 GG

Calved: 8/13/09 Horned EF1117087 Tattoo: 964I

WCR Sir Duke 761

BR Duke 261

M6 Gain & Grade 927 PLD

WCR Miss Tradition 8335

M511007

M6 Miss Mac 4140

HCR Mac 9176 Polled

M6 Miss Woo 262

BBCR Sir Mac 112 P/S

WCR Sir Fab Mac 809

Miss HCR Mac 8140

BBCR Miss Mac 941

F822177

Miss HCR Vanity 5104 TW

Skymont Ease 2078

•

SH Vanity 934Y Polled

CE	BW	WW	YW	MILK	MCE	TM	SC	CW	REA	FAT	MB
0.5	0.2	36	62	14	-1.7	32	0.7	23	-0.12	-0.009	0.19

- **Sale highlight! A direct daughter of 8140, now a Dam of Distinction.**
- After an extensive ET program at Finks, she sold to Jim Johnson, VA, and Lee Leachman, CO, in our 2006 sale.
- Full sister sold to Curtis Ohlde last year for \$3,100.
- Maternal sisters have sold to purebred breeders: Steve Arnold, AR; Ella Barrett, KS; Tom Greco, KS; Curtis Ohlde, KS; Everett Shepherd, IA; Bruce Fox, MO; Riverdale Charolais, MO; Steve Hargrave, KS.
- Last daughter we will offer anytime soon!



Miss HCR Mac 8140

61 Fink Vanity 8888 5772 Spur P

Calved: 8/07/08 Polled F1101578 Tattoo: 8888

Eatons Predictor 9230

Eatons Performer 6709

LT Western Spur 2061 PLD

Eatons Miss Big Sandy

M645786

LT Maiden's Breeze 8242P

LT Wyoming Wind 4020 PLD

LT Unlimited Maiden 1131

WCR Sir Tradition 066

WCR Sir Tradition 4402

Fink Vanity 5772 8140 066 ET

Ideal 809 45 of 25

F1041193

Miss HCR Mac 8140

BBCR Sir Mac 112 P/S

Miss HCR Vanity 5104 TW

CE	BW	WW	YW	MILK	MCE	TM	SC	CW	REA	FAT	MB
-0.6	-0.2	23	44	2	0.7	14	0.8	12	0.30	0.011	0.03

- Full sister to the dam of this heifer produced a flush female for us that sold in last year's sale to Curtis Ohlde.
- The grandam, 8140, is a Dam of Distinction.
- The Gridmaker—Spur calf this female is carrying could be good!
- Bred 1/08/10 to M6 Gridmaker 104.

62 Fink Vanity 8889 5774 Spur

Calved: 9/15/08 Horned F1101579 Tattoo: 8889

Eatons Predictor 9230

Eatons Performer 6709

LT Western Spur 2061 PLD

Eatons Miss Big Sandy

M645786

LT Maiden's Breeze 8242P

LT Wyoming Wind 4020 PLD

LT Unlimited Maiden 1131

WCR Sir Tradition 066

WCR Sir Tradition 4402

Fink Vanity 5774 8140 066 ET

Ideal 809 45 of 25

F1041196

Miss HCR Mac 8140

BBCR Sir Mac 112 P/S

Miss HCR Vanity 5104 TW

CE	BW	WW	YW	MILK	MCE	TM	SC	CW	REA	FAT	MB
-0.6	-0.1	24	45	3	0.7	15	0.8	12	0.30	0.011	0.03

- Another female bred much like the past few lots.
- Proven genetics—strong families—stacked together!
- This Easy Pro mating will fit real good!
- Bred 12/13/09 to LT Easy Pro 1158.

63 Fink Vanity 8874 4894 GM

Calved: 9/10/08 Horned F1101570 Tattoo: 8874

WCR Sir Tradition 066

WCR Sir Tradition 4402

M6 Grid Maker 104 PET

Ideal 809 45 of 25

M633377

VCR Miss Mac IV 317

WCR Sir FA Mac 2244

VCR Miss Duchess 113 PLD

LT Unlimited Ease 9108

BCR Polled Unlimited 003

Fink Vanity 489481409108ET

PP Miss Shandy 214 R194

F1020308

Miss HCR Mac 8140

BBCR Sir Mac 112 P/S

Miss HCR Vanity 5104 TW

CE	BW	WW	YW	MILK	MCE	TM	SC	CW	REA	FAT	MB
6.1	-0.3	30	53	14	0.5	29	0.6	20	0.40	-0.007	0.08

- Two full sisters to the dam sold to Bruce Fox, MO, for \$2,800, and Everett & Julie Shepherd, IA, for \$2,800.
- Calving ease, growth, carcass all wrapped together in a proven package.
- 2250, the Raile Charolais herdsire, has produced numerous herd-sires across the U.S.
- Bred 2/04/10 to Fink 2250 of 3575 D040.

Attention Buyers—Potential Bull Sales

Anyone that purchases 10 females or more in this sale will be eligible to JOINTLY merchandise bulls with Finks if they desire (meeting requirements).

Purchasers of less than 10 head will be eligible for bull sales TO FINKS (meeting requirements).

For more details, please call or e-mail and we will send you an information sheet.



VANITY FAMILY

64 Fink Vanity 8913 6880 Spur PTW
Calved: 7/31/08 Polled F1101601 Tattoo: 8913

65 Fink Vanity 8912 6880 Spur PTW
Calved: 7/31/08 Polled F1101600 Tattoo: 8912

Eatons Predictor 9230 Eatons Performer 6709
LT Western Spur 2061 PLD Eatons Miss Big Sandy
M645786 LT Maiden's Breeze 8242P LT Wyoming Wind 4020 PLD
LT Unlimited Maiden 1131
M6 Gain & Grade 927 PLD WCR Sir Duke 761
Fink Vanity 6880 4894 GG M6 Miss Mac 4140
F1063258 Finksvanty489481409108ET LT Unlimited Ease 9108
Miss HCR Mac 8140

CE	BW	WW	YW	MILK	MCE	TM	SC	CW	REA	FAT	MB
1.8	-0.7	29	50	4	2.6	18	1.0	12	0.10	0.008	0.14

- Full sister to the dam sold to Curtis Ohlde for \$3,100 last year, and was a donor for us because of her udder, feet, disposition, and EPD balance.
- Expect a super udder from these females with Spur and Gain & Grade.
- 7706, the service sire, has incredible scan data and sold for \$6,000 in our 2008 bull sale.
- 7706 is also a calving ease sire.
- 8913, Lot 64, bred approximately 3/10/10 to Fink 7706 of 5651 BY.
- 8912, Lot 65, bred approximately 2/20/10 to Fink 7706 of 5651 BY.

66 Fink Vanity 5773 8140 066 ET
Calved: 8/05/05 Polled F1041194 Tattoo: 5773

WCR Sir Tradition ABC Wienks Tradition
WCR Sir Tradition 066 WCR Miss Century Mac 126
M318119 Ideal 809 45 of 25 WCR Sir Fab Mac 809
Ideal D'Artagan 250F 08
BBCR Sir Mac 112 P/S WCR Sir Fab Mac 809
Miss HCR Mac 8140 BBCR Miss Mac 941
F822177 Miss HCR Vanity 5104 TW Skymont Ease 2078
SH Vanity 934Y Polled

CE	BW	WW	YW	MILK	MCE	TM	SC	CW	REA	FAT	MB
-1.2	-0.9	30	54	10	-3.5	25	0.4	19	0.26	-0.008	0.00

- Another direct daughter of 8140—The Dam of Distinction.
- Twin calves and doing a great job with them.
- Udder on this female is below average.
- Sells with twins: Lot 66A, bull, tattoo 014; Lot 66B, heifer, tattoo 013, born 4/07/10 by Fink 7706 of 5651 BY. (no breeding guarantee on 013 calf, probably a free martin)
- Bred 5/27/10 to M6 Gain & Grade 927.

AMY FAMILY

67 Fink Amy 6885 4925 GG
Calved: 7/23/06 Polled F1063261 Tattoo: 6885

WCR Sir Duke 761 BR Duke 261
M6 Gain & Grade 927 PLD WCR Miss Tradition 8335
M511007 M6 Miss Mac 4140 HCR Mac 9176 Polled
M6 Miss Woo 262
WCR Sir Tradition 066 WCR Sir Tradition 4402
Finks Amy 4925 502 066ET Ideal 809 45 of 25
F1020277 Miss MT Flash 502 Twin HCR Flash 5074 Polled
Miss MT 601

CE	BW	WW	YW	MILK	MCE	TM	SC	CW	REA	FAT	MB
0.9	0.4	29	51	14	-0.4	28	0.6	14	-0.08	-0.033	0.32

- Donor during fall 2009 & spring 2010.
- Very nice female and great EPDs.
- Note marbling EPD of +.32!
- We purchased the grandam, 502, as a choice from Hubert Charolais a few years back because of her 'kind' and production record.
- Members of this family sold last year to Ibach Charolais, NE; Bruner Charolais, TX; Broberg, NE; and Mike McWilliams, KS, as some of the highest selling lots in the sale.
- Breeding information will be announced sale day.



Fink Amy 6885 4925 GG, Lot 67

68 Fink Amy 8892 5801 GM

Calved: 8/06/08 Spurs F1101582 Tattoo: 8892
WCR Sir Tradition 066 WCR Sir Tradition 4402
M6 Grid Maker 104 PET Ideal 809 45 of 25
M633377 VCR Miss Mac IV 317 WCR Sir FA Mac 2244
VCR Miss Duchess 113 PLD
HCR Mac 9176 Polled FZ Mighty Mac Polled 828
Fink Amy 5801 502 9176 ET Lady HCR Mac 8063
F1041205 Miss MT Flash 502 Twin HCR Flash 5074 Polled
Miss MT 601

CE	BW	WW	YW	MILK	MCE	TM	SC	CW	REA	FAT	MB
4.5	-0.3	28	49	18	2.0	32	0.5	18	0.45	-0.029	0.25

- This female ratioed 112 @ weaning.
- The Amy family has surfaced as a moderate, carcass maternal family for us.
- Balanced EPDs & proven genetics are what programs are about.
- Many breeders in our past 3 female sales have gathered up the Amy family including Kansas breeders Sheppard Charolais, Hargrave Charolais, Russell Lewis, Mike McWilliams, and Obermeyer Charolais.
- Bred 1/01/10 to Fink 2250 of 3575 D040.

To view the offering after July 25,

go to www.finkbeefgenetics.com or LiveCattleSales.com

AMY FAMILY

69 Fink Amy 8885 5765 GM P

Calved: 8/18/08 Polled F1101575 Tattoo: 8885
WCR Sir Tradition 066 WCR Sir Tradition 4402

M6 Grid Maker 104 PET

M633377 VCR Miss Mac IV 317

Ideal 809 45 of 25
WCR Sir FA Mac 2244
VCR Miss Duchess 113 PLD

Eatons Beyond 7243

Fink Amy 5765 502 EB ET

F1041183 Miss MT Flash 502 Twin

Eatons Centurion 3324
Eatons Miss Falls 3639
HCR Flash 5074 Polled
Miss MT 601

CE	BW	WW	YW	MILK	MCE	TM	SC	CW	REA	FAT	MB
5.7	-1.1	16	35	16	5.4	24	0.5	12	0.34	-0.012	0.28

- A full sister to this female sold to Karen Ibach, Ibach Charolais, NE, for \$4,000 in 2009 to their select herd.
- A full sister to the dam of this bred heifer also sold to Karen Ibach, NE, in our 2009 sale.
- Carrying a 7706 calf will really increase the potential marbling EPD in this calf and this family.
- Bred approximately 3/01/09 to Fink 7706 of 5651 BY.

70 Fink Amy 7776 5762 GM P

Calved: 7/18/07 Polled F1084460 Tattoo: 7776
WCR Sir Tradition 066 WCR Sir Tradition 4402

M6 Grid Maker 104 PET

M633377 VCR Miss Mac IV 317

Ideal 809 45 of 25
WCR Sir FA Mac 2244
VCR Miss Duchess 113 PLD

Eatons Beyond 7243

Fink Amy 5762 502 EB ET

F1041180 Miss MT Flash 502 Twin

Eatons Centurion 3324
Eatons Miss Falls 3639
HCR Flash 5074 Polled
Miss MT 601

CE	BW	WW	YW	MILK	MCE	TM	SC	CW	REA	FAT	MB
5.7	-1.0	20	41	16	5.4	26	0.5	12	0.34	-0.011	0.27

- Weaned her 1st calf at an actual 758# this spring after the worst winter in recent times.
- Full sister sold to Ibach Charolais, NE, for \$4,000 as one of the most popular females in that sale.
- Blended EPDs—proven genetics!
- Bred 5/27/10 to M6 Gain & Grade 927.

71 Fink Amy 5765 502 EB ET

Calved: 8/24/05 Scurs F1041183 Tattoo: 5765
Eatons Centurion 3324 Eatons Horizon 0573

Eatons Beyond 7243

M492440 Eatons Miss Falls 3639

Eatons Miss Yates 0932
Eatons Stellar 1029
Eatons Miss Falls 6805

HCR Flash 5074 Polled

Miss MT Flash 502 Twin

F736594 Miss MT 601

HCR Exodus 9033 Polled
Miss HCR Mac 2015 Polled
EEE Little Sky Polled 93
Miss AC 910

CE	BW	WW	YW	MILK	MCE	TM	SC	CW	REA	FAT	MB
5.2	-2.7	4	14	15	8.1	17	0.2	2	-0.08	0.007	0.44

- **Marbling EPD of .44**—if you're looking to improve this trait, this female could work!
- Nice uddered female.
- The resulting calf from Gain & Grade should be one of the highest in the breed for marbling.
- Lot 71A, bull calf, tattoo 08, born 4/21/10 by 7706, the \$6,000 sale topper bull in 2008.
- Bred 5/27/10 to M6 Gain & Grade.

72 Finks Miss 4878 502 066ET

Calved: 8/30/04 Polled F1014867 Tattoo: 4878
WCR Sir Tradition ABC Wienks Tradition

WCR Sir Tradition 066

M318119 Ideal 809 45 of 25

WCR Miss Century Mac 126
WCR Sir Fab Mac 809
Ideal D'Artagan 250F 08

HCR Flash 5074 Polled

Miss MT Flash 502 Twin

F736594 Miss MT 601

HCR Exodus 9033 Polled
Miss HCR Mac 2015 Polled
EEE Little Sky Polled 93
Miss AC 910

CE	BW	WW	YW	MILK	MCE	TM	SC	CW	REA	FAT	MB
2.3	-0.4	12	23	19	0.3	25	0.1	11	0.15	-0.029	0.18

- Sheppard Charolais, KS, bought a full sister to this female in 2007.
- A full sister produced a \$3,100 female to Tom Greco, KS, in 2009 sale.
- Another full sister produced a female we flushed and then sold to Bruner Charolais, TX, in 2009.
- 8716 is a Thundering Wind son we saved to use on a group of fall-calving cows last year.
- Bred approximately 2/01/10 to Fink 8716 10224 T.Wind.

73 Fink Amy 4911 5029108ET

Calved: 8/06/04 Polled F1020286 Tattoo: 4911
BCR Polled Unlimited 003 FZ Mighty Mac Polled 828

LT Unlimited Ease 9108

M301930 PP Miss Shandy 214 R194

Miss Camelot
Mr Bonaparte 194 Twin
PP Shannas 54 BLF

HCR Flash 5074 Polled

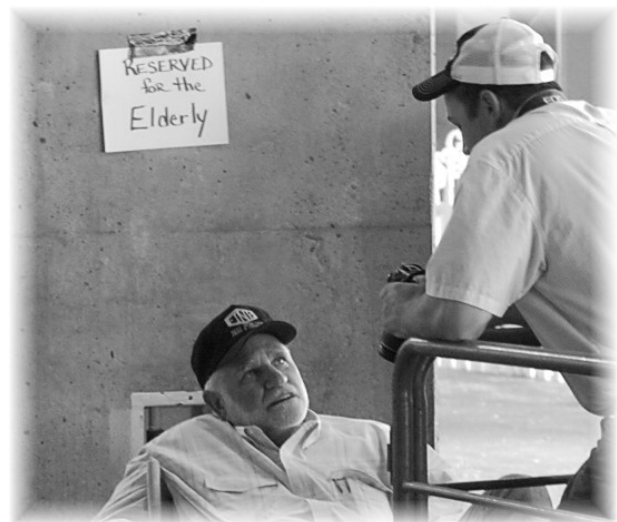
Miss MT Flash 502 Twin

F736594 Miss MT 601

HCR Exodus 9033 Polled
Miss HCR Mac 2015 Polled
EEE Little Sky Polled 93
Miss AC 910

CE	BW	WW	YW	MILK	MCE	TM	SC	CW	REA	FAT	MB
9.6	-2.4	12	18	19	2.0	24	0.2	12	0.03	-0.003	0.26

- Full sisters to this female produced females last year that sold to Broberg Charolais, NE, and Mike McWilliams, KS.
- Russell Lewis, KS, bought a full sister in 2007.
- Bred 5/29/10 to M6 Gridmaker 104.



Enjoying a break at the 2009 Jr. Nationals.

DANTE FAMILY

74 Fink Dante 7782 5816 Pro

Calved: 7/26/07 Polled F1084491 Tattoo: 7782
 LT Unlimited Ease 9108 BCR Polled Unlimited 003
LT Easy Pro 1158 PLD PP Miss Shandy 214 R194
 M620348 LT Lady Macbeth 8413 ETP WCR Sir Fab Mac 809
 LCR Miss Lindskov 7131
 Eatons Predictor 9230 Eatons Performer 6709
Fink Hera 5816 7085 Pred ET Eatons Miss Big Sandy
 F1041210 Miss HCR Flash 7085 Poll HCR Flash 5074 Polled
 VJ Dante BD100

CE	BW	WW	YW	MILK	MCE	TM	SC	CW	REA	FAT	MB
4.7	-0.5	17	38	14	0.2	23	0.1	9	0.06	0.013	0.28

- **Nice Easy Pro daughter**—semen is getting short on Easy Pro. His daughters make excellent cows.
- Young female—great family! Great udder and feet!
- Lot 74A, heifer calf, tattoo 012, born 3/30/10 by Fink 7706 of 5651 BY.
- Breeding information announced sale day.

75 Fink Hera 5813 7085 Pred ET

Calved: 8/27/05 Polled F1041209 Tattoo: 5813
 Eatons Performer 6709 Eatons Treasure 177
Eatons Predictor 9230 Eatons Miss Fonzo 2532
 M304405 Eatons Miss Big Sandy Eatons Big Deal
 HCR Flash 5074 Polled Eatons Miss Sandra 9210
Miss HCR Flash 7085 Poll HCR Exodus 9033 Polled
 F797105 VJ Dante BD100 Miss HCR Mac 2015 Polled
 VJ Dante
 VJ Dante B9

CE	BW	WW	YW	MILK	MCE	TM	SC	CW	REA	FAT	MB
2.4	0.6	10	34	12	5.4	17	0.2	3	0.14	0.007	0.20

- Predictor 9230 is considered one of the backbones in the Eaton herd.
- David Evans, TX, bought a full sister to this female in 2007. Jeff Reed bought another one in 2009.
- Lot 75A, heifer calf, tattoo 03, born 3/14/10 by Fink 2250 of 3575 D040.
- Bred 5/27/10 to Fink 2250 of 3575 D040.

76 Fink Dante 6867 3035 GG

Calved: 8/26/06 Polled F1063236 Tattoo: 6867
 WCR Sir Duke 761 BR Duke 261
M6 Gain & Grade 927 PLD WCR Miss Tradition 8335
 M511007 M6 Miss Mac 4140 HCR Mac 9176 Polled
 M6 Miss Woo 262
 LT Reflection 7136 PLD LT Wyoming Wind 4020 PLD
Miss HCR Reflection 3035 LT Unlimited Maid 4051 P
 F969256 Miss HCR Flash 7085 Poll HCR Flash 5074 Polled
 VJ Dante BD100

CE	BW	WW	YW	MILK	MCE	TM	SC	CW	REA	FAT	MB
2.3	0.3	25	42	11	3.1	24	0.8	10	-0.20	-0.020	0.30

- Typical Gain & Grade—nice uddered and productive.
- Gain & Grade daughters add a lot to the breed due to balanced EPDs and marbling.
- Lot 76A, bull calf, tattoo 09, born 4/14/10 by Fink 7706 of 5651 BY.
- Bred 5/27/10 to M6 Gain & Grade 927.

77 Fink Dante 8871 4862 Spur P

Calved: 8/11/08 Scurs F1101568 Tattoo: 8871
 Eatons Predictor 9230 Eatons Performer 6709
LT Western Spur 2061 PLD Eatons Miss Big Sandy
 M645786 LT Maiden's Breeze 8242P LT Wyoming Wind 4020 PLD
 LT Unlimited Maiden 1131
 WCR Sir Tradition 066 WCR Sir Tradition 4402
Finks Dante486270859108ET Ideal 809 45 of 25
 EF1014865 Miss HCR Flash 7085 Poll HCR Flash 5074 Polled
 VJ Dante BD100

CE	BW	WW	YW	MILK	MCE	TM	SC	CW	REA	FAT	MB
-0.9	0.3	16	34	1	1.5	9	0.7	6	0.25	-0.001	0.11

- Grandam produced over \$54,000 in bull sales alone.
- Grandam was one of our 'pick' females from Dave Hubert in 2003.
- Bred approximately 2/20/10 to Fink 7706 of 5651 BY.

78 Fink Dante 7744 7085 GM ET

Calved: 9/22/07 Horned EF1084125 Tattoo: 7744
 WCR Sir Tradition 066 WCR Sir Tradition 4402
M6 Grid Maker 104 PET Ideal 809 45 of 25
 EM633377 VCR Miss Mac IV 317 WCR Sir FA Mac 2244
 HCR Flash 5074 Polled VCR Miss Duchess 113 PLD
Miss HCR Flash 7085 Poll HCR Exodus 9033 Polled
 F797105 VJ Dante BD100 Miss HCR Mac 2015 Polled
 VJ Dante
 VJ Dante B9

CE	BW	WW	YW	MILK	MCE	TM	SC	CW	REA	FAT	MB
2.5	1.4	22	45	14	1.1	25	0.3	13	0.35	-0.027	0.21

- Real powerful Gridmaker daughter out of the 7085 female that served as a donor for Fink, Hubert and Schrader Charolais.
- A lot of good proven genetics here.
- Lot 78A, bull calf, tattoo 05, born 3/25/10 by Fink 2250 of 3575 D040.
- Bred 5/27/10 to Fink 2250 of 3575 D040.

79 Fink Dante 7770 4907 Lead

Calved: 8/14/07 Polled F1084451 Tattoo: 7770
 Eatons Candidate 9177 Eatons Continuation 7094
Eatons Leader 2233 P Eatons Miss Falls 3639
 M652217 Eatons Rhodora 9506 Eatons Celebration
 WCR Sir Tradition 066 Eatons Miss Rhodora 7518
Fink Hera 49077085066ET WCR Sir Tradition 4402
 F1020284 Miss HCR Flash 7085 Poll Ideal 809 45 of 25
 HCR Flash 5074 Polled
 VJ Dante BD100

CE	BW	WW	YW	MILK	MCE	TM	SC	CW	REA	FAT	MB
3.4	1.0	24	48	-3	6.3	9	0.4	14	0.36	0.016	0.01

- Leader daughter out of a nice 066 x 7085 cross. Several bull matings like this were very popular in past bull sales.
- Lot 79A, heifer calf, tattoo 011, born 4/06/10 by Fink 7706 of 5651 BY.
- Bred 5/27/10 to M6 Gridmaker 104.

LEILANI FAMILY

80 Fink Leilani 8857 2540 LD

Calved: 7/30/08 Polled EFl 102221 Tattoo: 8857

81 Fink Leilani 8861 2540 LD

Calved: 7/26/08 Polled EFl 115039 Tattoo: 8861

82 Fink Leilani 8864 2540 LD

Calved: 7/23/08 Polled EFl 102227 Tattoo: 8864

83 Fink Leilani 8862 2540 LD

Calved: 7/24/08 Polled EFl 102225 Tattoo: 8862

Eatons Candidate 9177 Eatons Continuation 7094
Eatons Leader 2233 P Eatons Miss Falls 3639
 M652217 Eatons Rhodora 9506 Eatons Celebration
 Eatons Miss Rhodora 7518
 RC Budsmypad 225 Polled RC Bud 04 ET
Finkleilani2540945budet Miss Showgun RC 416
 f971755 WCR Miss Impressive 945P JWK Impressive D040 ET
 WCR Miss Dakota Wind 724

CE	BW	WW	YW	MILK	MCE	TM	SC	CW	REA	FAT	MB
7.0	-0.1	22	45	-5	7.7	6	0.5	15	0.12	0.036	-0.01

- **Four full sisters out of Leader—a sire of muscle.**
- Females out of this family have sold in past sales to these pure-bred breeders: James Hayden, KY; ETR Ranch, NE; Jeff Reed, KS; John Hardy, IA; Jeff Natier, KS; Russell Lewis, KS.
- 8857 bred 12/13/09 to M6 Gridmaker 104.
- 8861 bred 12/16/09 to M6 Gridmaker 104.
- 8864 bred 1/03/10 to M6 Gridmaker 104.
- 8862 bred 5/27/10 to M6 Gridmaker 104.

84 Fink Leilani 7783 5809 Pro

Calved: 7/27/07 Polled F1086073 Tattoo: 7783

LT Unlimited Ease 9108 BCR Polled Unlimited 003
LT Easy Pro 1158 PLD PP Miss Shandy 214 R194
 M620348 LT Lady Macbeth 8413 ETP WCR Sir Fab Mac 809
 LCR Miss Lindskov 7131
 Eatons Predictor 9230 Eatons Performer 6709
Fink Leilani 5809 945 Pred ET Eatons Miss Big Sandy
 EF1041218 WCR Miss Impressive 945P JWK Impressive D040 ET
 WCR Miss Dakota Wind 724

CE	BW	WW	YW	MILK	MCE	TM	SC	CW	REA	FAT	MB
7.6	-1.3	22	44	11	2.2	22	0.1	10	0.05	0.022	0.24

- Weaned a bull calf this spring at 826# actual.
- Easy Pro daughters have great udders, calving ease, and still nice, balanced EPDs, including carcass.
- Full sister sold to current AICA President James Hayden, KY, in our 2009 sale.
- 945 generated over \$40,000 in bull sales.
- Bred 5/27/10 to M6 Gain & Grade 927.

Lot 85, full sister to Suspect!

85 BLB Laci's Legacy 523PET

Calved: 10/02/05 Polled F1037905 Tattoo: 523

Schurrtop 5627 WCR Sir Duke 783
LT Wyoming Wind 4020 PLD Miss Sugar Valley 908
 M411450 LT Chap's lady 2170P LT Unlimited Chaps 0109
 LT Prairie Maiden 8095
 TAC Mr Cool 202 P/S ET DC Bea Cool 720Z ET
LC Miss Lacy Cae 104 MJM Bobbie Sue 8101 ET
 F749807 TJF Cologne 473 Woodys Sir Eclair W-059
 TJF Cologne 209

CE	BW	WW	YW	MILK	MCE	TM	SC	CW	REA	FAT	MB
4.0	1.0	21	33	-4	7.6	7	0.5	n/a	n/a	n/a	n/a

- Full sister to LC Suspect 0109!
- Currently flushing, sells open with 2 embryos by EC No Doubt.
- Unique opportunity to own a full sister to one of the breeds most popular sires. He is deceased and his semen is extremely limited.
- Suspect has probably sired as many good show cattle as any sire in recent history.
- Megan's Grand Champion bred and owned at the 2009 Jr. Nationals in California is a Suspect daughter.
- Great udder on this female.
- Her 2009 heifer is being shown by Payden Barrett, KS.



BLB Laci's Legacy 523PET, Lot 85



Suspect

LEILANI FAMILY

86 Fink Leilani 5788 2538 Pro

Calved: 10/12/05 Polled FI1042333 Tattoo: 5788

LT Unlimited Ease 9108 BCR Polled Unlimited 003

LT Easy Pro 1158 PLD PP Miss Shandy 214 R194

M620348 LT Lady Macbeth 8413 ETP WCR Sir Fab Mac 809

LCR Miss Lindskov 7131

RC Budsmydad 225 Polled RC Bud 04 ET

Finkleilani2538945budet Miss Showgun RC 416

F971753 WCR Miss Impressive 945P JWK Impressive D040 ET

WCR Miss Dakota Wind 724

CE	BW	WW	YW	MILK	MCE	TM	SC	CW	REA	FAT	MB
8.8	-2.6	19	34	2	-0.5	12	0.1	16	-0.08	0.013	0.22

- Easy Pro daughters are noted for their udders and carcass traits for marbling.
- 8716 service sire was saved to use on a group of females because of his volume, mass, and pedigree.
- Lot 86A, heifer calf, tattoo 9733, born 8/12/09, polled, by M6 Gridmaker 104.
- Bred approximately 12/03/09 to Fink 8716 of 10224 T. Wind.



Fink Leilani 5788 2538 Pro, Lot 86

87 Fink Paula 8882 525 GM

Calved: 9/16/08 Polled FI102999 Tattoo: 8882

WCR Sir Tradition 066 WCR Sir Tradition 4402

M6 Grid Maker 104 PET Ideal 809 45 of 25

M633377 VCR Miss Mac IV 317 WCR Sir FA Mac 2244

VCR Miss Duchess 113 PLD

LT Wyoming Wind 4020 PLD Schurrtop 5627

BLB MS Wind 525 P ET LT Chap's Lady 2170P

F1038179 BB MS Duke Unlimited204P VCR Sir Duke 914 PLD

SCF Paula 190

CE	BW	WW	YW	MILK	MCE	TM	SC	CW	REA	FAT	MB
6.1	0.5	29	51	11	5.0	26	0.9	15	0.43	-0.014	0.07

- Gridmaker out of a female that is a Wyoming Wind—914 cross.
- Allison Jones showed the dam in 2006.
- Bred approximately 2/15/10 to Fink 7706 of 5651 BY.

FINK FEMALES

88 Fink Ease 8907 685I GM P

Calved: 7/29/08 Polled FI101596 Tattoo: 8907

WCR Sir Tradition 066 WCR Sir Tradition 4402

M6 Grid Maker 104 PET Ideal 809 45 of 25

M633377 VCR Miss Mac IV 317 WCR Sir FA Mac 2244

VCR Miss Duchess 113 PLD

M6 Gain & Grade 927 PLD WCR Sir Duke 761

Fink Ease 685I 2125 GG M6 Miss Mac 4140

F1063226 Finks Ease 2125 949Budet RC Budsmydad 225 Polled

WCR Miss Impressive 949P

CE	BW	WW	YW	MILK	MCE	TM	SC	CW	REA	FAT	MB
4.3	0.6	35	63	13	1.8	31	0.7	23	0.32	-0.024	0.14

- Gridmaker—Gain & Grade—Bud bred female out of a great grandam, 949, that was our pick of the Wienk heifers in 2000.
- This heifer had a 109 weaning weight ratio.
- Take time to study the EPDs & proven sires—The Fink program.
- Bred 2/04/10 to LT Easy Pro 1158.

89 Fink Lady 8883 5750 Pro P

Calved: 7/31/08 Polled FI101574 Tattoo: 8883

LT Unlimited Ease 9108 BCR Polled Unlimited 003

LT Easy Pro 1158 PLD PP Miss Shandy 214 R194

M620348 LT Lady Macbeth 8413 ETP WCR Sir Fab Mac 809

LCR Miss Lindskov 7131

RC Budsmydad 225 Polled RC Bud 04 ET

Fink Lady 5750 014 Bud ET Miss Showgun RC 416

EF1044984 HBR Lady Duke 014 P BR Duke 261

HBR Lady Marvin 448 P

CE	BW	WW	YW	MILK	MCE	TM	SC	CW	REA	FAT	MB
3.4	-0.4	12	24	15	-3.1	21	0.1	17	-0.07	0.009	0.20

- Gridmaker should be an excellent cross on this Pro female.
- The grandam, 014, was a foundation 261 daughter for us. She was moderate framed, had great feet and a great udder—what we strive for in breeding cattle.
- Bred 12/18/09 to M6 Gridmaker 104.

90 Fink Kan 9568 5820 BL

Calved: 8/05/09 Polled EFI117093 Tattoo: 9568

LT Unlimited Ease 9108 BCR Polled Unlimited 003

LT Easy Blend 5125 Pld PP Shandy 214 R194

M705113 LT Brenda 1014 PLD WCR Prime Cut 764 Pld

LT Brenda's Breeze 9207P

HCR Mac 9176 Polled FZ Mighty Mac Polled 828

Fink Kan 5820 1886 9176 Lady HCR Mac 8063

F1040923 Finks Kan 5820 1886 9176 WCR Sir Tradition 066

HBR Lady Duke 014 P

CE	BW	WW	YW	MILK	MCE	TM	SC	CW	REA	FAT	MB
1.9	0.9	35	56	9	0.1	26	0.7	27	0.16	0.003	0.10

- **Sale attraction!**
- Yearling heifer that weaned at an actual 740# in a tough winter.
- Real nice Easy Blend that represents a solid family at Finks.
- Daughters out of this family have sold to: Obermeyer Charolais, KS; WDZ, MN; Scott Jensen, SD; and Millstone Charolais, KY.
- Ready to breed this fall!

FINK FEMALES

91 Fink Lady 5750 014 Bud ET

Calved: 8/10/05 Polled EF1044984 Tattoo: 5750
 RC Bud 04 ET BCR Polled Unlimited 003
RC Budsmymdad 225 Polled Miss Enterprise 02 RC
 M355527 Miss Showgun RC 416 Spains Show Me Polled
 Miss Enterprise RC 01
 BR Duke 261 BR Duke 295
HBR Lady Duke 014 P BR Ann 14
 F564244 HBR Lady Marvin 448 P J Bar J Trademark 252
 HBR Lady Bingo 012 Pld

CE	BW	WW	YW	MILK	MCE	TM	SC	CW	REA	FAT	MB
-0.2	0.6	12	24	7	-1.2	14	0.3	19	-1.10	-0.001	0.02

- Polled, young daughter of BudsMyDad.
- Dam is the foundation 014, Duke 261 daughter we started with.
- 8716 service sire was a powerhouse bull we chose to breed some cows to last fall.
- Bred approximately 12/08/09 to Fink 8716 of 10224 T.Wind.

92 Fink Kan 8898 5820 BL

Calved: 8/03/08 Scurs F1101587 Tattoo: 8898
 LT Assertion 1277 P Eatons Assert 9171
LT Bluegrass 4017 P LT Alli's Class 9140 P
 M686569 LT Pearl's Breeze 2236 P LT Wyoming Wind 4020 PLD
 LT Unlimited Pearl 7053 P
 HCR Mac 9176 Polled FZ Mighty Mac Polled 828
Fink Kan 5820 1886 9176 Lady HCR Mac 8063
 F1040923 Finks Kan 5820 1886 9176 WCR Sir Tradition 066
 HBR Lady Duke 014 P

CE	BW	WW	YW	MILK	MCE	TM	SC	CW	REA	FAT	MB
4.2	-0.9	18	35	10	2.7	19	0.6	5	0.14	0.008	0.10

- Bluegrass female bred to Gridmaker out of a Mac 9176 dam!
- A full sister to 1886 sold in our 2006 sale for \$3,500.
- Bred 1/01/10 to M6 Gridmaker 104.

93 MF Miss Bud 8866 69 LD

Calved: 8/02/08 Polled EF1102246 Tattoo: 8866

94 MF Miss Bud 8867 69 LD

Calved: 8/03/08 Polled EF1102248 Tattoo: 8867
 Eatons Candidate 9177 Eatons Continuation 7094
Eatons Leader 2233 P Eatons Miss Falls 3639
 M652217 Eatons Rhodora 9506 Eatons Celebration
 Eatons Miss Rhodora 7518
 RC Budsmymdad 225 Polled RC Bud 04 ET
AD Miss Bud 69 Pld ET Miss Showgun RC 416
 F910160 FSU Miss Nicholas WCR Sir Fa Mac 2244
 OC Miss Oakdale 1678

CE	BW	WW	YW	MILK	MCE	TM	SC	CW	REA	FAT	MB
1.8	1.1	24	48	-4	3.9	8	0.5	19	0.18	0.027	-0.03

- The Nickie family started at Fresno State in CA with embryos purchased by Dave Nichols, KS. Megan bought '69' from Dave and has been successful with her progeny.
- Members of this family have sold to Dybdal's, NE; James Hayden, KY; Bruce Fox, MO; Rod Thrash, AR.
- 8866 breeding information announced sale day.
- 8867 bred 5/28/10 to M6 Gridmaker 104.

95 MF Sahara 8808 Sus

96 MF Sahara 8807 Sus

Calved: 04/10/08 Polled EF1103411 Tattoo: 8807
 LT Wyoming Wind 4020 Pld Schurrtop 5627
LC Suspect 0109 P ET LT Chap's lady 2170P
 M611748 LC Miss Laci Cae 104 TAC Mr Cool 202 P/S ET
 TJF Cologne 473
 Swan Wind M126 PLD LT Wyoming Wind 4020 PL
JASR Sahara 50R P Swan Miss Joan K118 PLD
 F1031636 TO Miss SE 3011 ET Schurrtop Ease 8953 PLD
 BCI 7130 Shurley PLD

CE	BW	WW	YW	MILK	MCE	TM	SC	CW	REA	FAT	MB
4.6	1.3	31	45	-2	5.7	14	n/a	n/a	n/a	n/a	n/a

- Two full sisters by Suspect out of Megan's winning female at the 2006 Jr. Nationals.
- Dam is bred by J&S Ranch and sold to ETR Ranch, NE, in our 2009 sale.
- A maternal sister to these heifers sold to Nattier Charolais, KS, for \$2,600 in 2009.
- 8808 bred 2/05/10 to M6 Gridmaker 104.
- 8807 bred approximately 2/10/10 to Fink 7706 of 5651 BY.



JASR Sahara 50R P

Division Champion, 2006 American Royal, Kansas City, Missouri

97 MF Shakira 8917 68S GM

Calved: 8/26/08 Polled F1103394 Tattoo: 8917
 WCR Sir Tradition 066 WCR Sir Tradition 4402
M6 Grid Maker 104 PET Ideal 809 45 of 25
 M633377 VCR Miss Mac IV 317 WCR Sir FA Mac 2244
 VCR Miss Duchess 113 PLD
 VF Perfect Wind 93 Pld LT Wyoming Wind 4020 PLD
JASR Shakira 68S P SC Miss Perfect 8554 P ET
 F1060047 HSV Simone 16 SH Easy 715G Pld ET
 HSV Oyen 7101

CE	BW	WW	YW	MILK	MCE	TM	SC	CW	REA	FAT	MB
2.3	0.8	26	48	10	1.1	23	n/a	12	0.39	-0.013	0.06

- A Gridmaker out of another J&S Ranch female that Megan showed.
- The Wyoming Wind—Gridmaker cross genetics are well proven.
- Bred 2/04/10 to LT Easy Pro 1158.

FINK FEMALES

98 Fink Pride 8930 6871 GM P

Calved: 8/06/06 Polled F1063251 Tattoo: 6871
 WCR Sir Tradition 066 WCR Sir Tradition 4402
M6 Grid Maker 104 PET Ideal 809 45 of 25
 M633377 VCR Miss Mac IV 317 WCR Sir FA Mac 2244
 VCR Miss Duchess 113 PLD
 M6 Gain & Grade 927 PLD WCR Sir Duke 761
Fink Pride 6871 4871 GG M6 Miss Mac 4140
 F1063251 Finkspride487180239108ET LT Unlimited Ease 9108
 Miss HCR Ease 8023 PLD

CE	BW	WW	YW	MILK	MCE	TM	SC	CW	REA	FAT	MB
5.6	0.5	36	62	12	1.7	30	0.8	16	0.28	-0.024	0.19

- Dam was a highlight for our 2009 sale going to Curtis Ohlde, KS, for \$3,900, after serving as a donor for us.
- This heifer ratioed 112 at weaning!
- Could you write a nicer set of EPDs and high proven sires?
- This one will make a cow!
- Bred approximately 2/15/10 to Fink 7706 of 5651 BY.



Fink Pride 6871 4871 GG, Dam of Lot 98

100 Fink Shandy 9531 6878 BL

Calved: 9/09/09 Polled F1117088 Tattoo: 9531
 LT Unlimited Ease 9108 BCR Polled Unlimited 003
LT Easy Blend 5125 Pld PP Shandy 214 R194
 M705113 LT Brenda 1014 PLD WCR Prime Cut 764 Pld
 M6 Gain & Grade 927 PLD LT Brenda's Breeze 9207P
Fink Shandy 6878 4884 GG WCR Sir Duke 761
 F1063256 Finks Shandy 48841123EBET M6 Miss Mac 4140
 Eatons Beyond 7243
 LT Unlimited Shandy1123P

CE	BW	WW	YW	MILK	MCE	TM	SC	CW	REA	FAT	MB
3.1	0.5	37	59	10	1.9	28	0.8	26	0.03	-0.001	0.24

- One of the few LT Easy Blends in this sale!
- We wanted to offer some out of various families.
- Note the Shandy 1123 is a full sister to LT Unlimited Ease 9108, the backbone of LT Ranch.
- Unique pedigree from the Fink program.
- Ready to breed this fall!

101 Fink Shandy 7757 4934 GM

Calved: 7/726/07 Polled F1084455 Tattoo: 7757
 WCR Sir Tradition 066 WCR Sir Tradition 4402
M6 Grid Maker 104 PET Ideal 809 45 of 25
 M633377 VCR Miss Mac IV 317 WCR Sir FA Mac 2244
 VCR Miss Duchess 113 PLD
 Eatons Beyond 7243 Eatons Centurion 3324
Finks Shandy49341123EBET Eatons Miss Falls 3639
 F1022030 LT Unlimited Shandy1123P BCR Polled Unlimited 003
 PP Miss Shandy 214 R194

CE	BW	WW	YW	MILK	MCE	TM	SC	CW	REA	FAT	MB
5.1	-0.4	24	45	13	4.0	25	0.7	12	0.40	-0.007	0.24

- Another Shandy unique pedigree again from some of the breed's most respected genetics.
- Take a second look at this Spur heifer calf at side.
- Lot 101A, heifer calf, tattoo 9625, polled, born 8/08/09, by LT Western Spur (ET heifer).
- Bred 5/27/10 to Fink 2250 of 3575 D040.

99 Fink Verna 5799 E225 0117 ET

Calved: 9/23/05 Polled EF1044320 Tattoo: 5799
 BCR Polled Unlimited 003 FZ Mighty Mac Polled 828
LT Unlimited Leader 0117 Miss Camelot
 M317731 WF Miss Northern Mac 015 Frisbie Mac Polled 245
 LRW Bald Eagles Star 715
 VCR Sir Duke914 Pld WCR Sir Duke 761
JWK Verna E225 ET WCR Miss Mac IV 534
 F753237 Lemmon Actress X140 CCC Knockouts Actor 3161
 Lemmon Princess 3148

CE	BW	WW	YW	MILK	MCE	TM	SC	CW	REA	FAT	MB
5.3	1.6	31	54	5	4.7	20	0.9	13	0.15	0.004	0.04

- Result of embryos purchased from Morven Farms many years ago.
- Verna E225 is one of the most popular 914 daughters in the breed.
- Lot 99A, heifer calf, tattoo 01, born 3/13/10, by M6 Gridmaker 104.
- Bred 5/28/10 to M6 Gridmaker 104.

102 Fink Shandy 9625 7757 WS

Calved: 8/08/09 Polled EF1117083 Tattoo: 9625
 Eatons Predictor 9230 Eatons Performer 6709
LT Western Spur 2061 PLD Eatons Miss Big Sandy
 M645786 LT Maiden's Breeze 8242P LT Wyoming Wind 4020 PLD
 LT Unlimited Maiden 1131
 M6 Gridmaker 104 PET WCR Sir Tradition 066
Fink Shandy 7757 4934 GM VCR Miss Mac IV 317
 F1084455 Finks Shandy 49341123EBET Eatons Beyond 7243
 LT Unlimited Shandy1123P

CE	BW	WW	YW	MILK	MCE	TM	SC	CW	REA	FAT	MB
2.0	-0.26	21	41	2	4.7	13	0.9	8	0.34	0.009	0.12

- Full sister to the dam of this heifer produced a flush female for us that sold in last year's sale to Curtis Ohlde.
- The grandam, 8140, is a Dam of Distinction.
- The Gridmaker—Spur calf this female is carrying could be good!
- Bred 1/08/10 to M6 Gridmaker 104.

FINK FEMALES

103 Fink CC 5823 1877 9108

Calved: 11/15/05 Polled F1040921 Tattoo:5823

BCR Polled Unlimited 003 FZ Mighty Mac Polled 828

LT Unlimited Ease 9108

M301930

PP Miss Shandy 214 R194

Miss Camelot

Mr Bonaparte 194 Twin

PP Shannas 54 BLF

HCR Flash 5074 Polled

Finks CC 1877 067 F ET

F945091

CC Miss Wienk 067 P

HCR Exodus 9033 Polled

Miss HCR Mac 2015 Polled

WCR Sir Duke 815

CC Miss Poker 806 PLDTWN

CE	BW	VV	YW	MILK	MCE	TM	SC	CW	REA	FAT	MB
10.2	-2.9	14	30	11	3.2	18	0.4	4	-0.02	-0.000	0.20

- Nice 9108 daughter — still has several years ahead of her.
- 9108 daughters have done very well at Finks and across the U.S.
- Great udders and proven genetics are hard to beat in any breed!
- Bred approximately 2/10/10 to Fink 7706 of 5651 BY.

CROSSBRED FEMALES (NOT REGISTERED)

104 Calved: Fall 2008

Tattoo: 8943

- Bred 1/05/10 to LT Easy Pro 1158
- Sired by M6 Gridmaker 104
- Dam is by WCR Tradition 066 out of a 1/2 Angus, 1/2 Charolais dam.
- Excellent, deep-bodied heifer.

105 Calved: 8/08/09

Tattoo: 9586

- Yearling, light red, cross heifer
- Sired by LT Western Spur
- Dam is a 1/2 Red Angus, 1/2 Charolais
- Another deep-bodied, super nice heifer.
- Ready to breed this fall!

106 Calved: 8/11/03

Tattoo: 31

- 1/2 Angus, 1/2 Charolais
- Sired by WCR Sir Tradition 066
- Dam is a New Design 036 x Leachman Right Time
- This cow has been used to produce composite bulls in our program.
- Bred 5/27/10 to M6 Gridmaker 104.

CHAROLAIS SEMEN

107 WCR Sir Tradition 066 M318119..... 5 Straws

108 WCR Sir Tradition 066 M318119..... 5 Straws

Semen is getting very limited on this powerhouse sire.

109 Unlimited Ease 9108..... M301930..... 5 Straws

110 Unlimited Ease 9108..... M301930..... 5 Straws

The foundation of many programs; and sire of many of today's most popular sires.

111 Eatons Predictor 9230 M304405..... 9 Straws + 54 signings

The backbone of the Eaton program.

112 WCR Sir Duke 761 M269828..... 9 Straws

Sire of 914, 8 sons of 914 are 2009 Multiple Trait Leaders!

113 HCR Mac 9176 Polled M301627..... 10 Straws

114 HCR Mac 9176 Polled M301627..... 10 Straws

Sire of the dam of M6 Gain & Grade.

115 VCR Sir Duke 914..... M297007..... 10 Straws

116 WCR Sir Fab Mac 809 M202427..... 9 Straws

ANGUS DIVISION

We are offering a small group of well-bred Spring-calving Angus females also, as many of our customers also have Angus. We have flushed some of these females.

117 Fink Erica 8277 643 I K205

Calved: 8/12/08 Reg. # 16357815 Tattoo:8277

118 Fink Erica 8278 643 I K205

Calved: 8/14/08 Reg. # 16357820 Tattoo:8278

Nichols Extra H6 N Bar Emulation EXT
Nichols Extra K205 Nichols Eileen May F261
 13752642 Nichols Black Heiress F346 Nichols Heavy Duty D20
 Nichols Black Heiress B3

Boyd On Target 1083 SAF 598 Bando 5175
Fink Erica 6431 359 OT Boyd Forever Lady 7095
 15698543 Finks Erica 359 1418 CM Finks Cowmaker 205
 Finks Erica 1418 7312 RT

CE	BW	WW	YW	Milk	SC	CW	REA	FAT	MB
+7	24	52	100	23	n/a	7	.11	.016	.15

- Full sisters sold to Cliffside Farms, KY.
- These females were flushed one time as heifers.
- Pedigrees packed with proven genetics.
- Really nice female.
- 8277 bred 5/27/10 to CAR Efficient 534.
- 8278 bred 5/28/10 to CAR Efficient 534.



Nichols Extra K205

119 Fink Miss 8257 6445 NT

Calved: 8/22/08 Reg. # 16357757 Tattoo:8257

VDAR Shoshone 548 Schearbrook Shoshone
AAR New Trend VDAR Polly 308
 9958634 Donna AAR 74 Candolier Forever 376
 Donna 244 GDAR

Boyd On Target 1083 SAF 598 Bando 5175
Fink Miss 6445 36 OT Boyd Forever Lady 7095
 15698546 Finks Miss 36 1117 CM Finks Cowmaker 205
 Finks Miss 1117 4168 Fix

CE	BW	WW	YW	Milk	SC	CW	REA	FAT	MB
n/a	4.3	39	73	26	n/a	6	-.02	.023	.22

- AAR New Trend—the standard for fertility, muscle, carcass.
- The dam sold to Hartley Ranch, TX.
- AAR New Trend semen is extremely rare.
- Bred 5/27/10 to CAR Efficient 534.

120 Fink Donna 8263 6444 NT

Calved: 8/19/08 Reg. # 16357769 Tattoo:8263

VDAR Shoshone 548 Schearbrook Shoshone
AAR New Trend VDAR Polly 308
 9958634 Donna AAR 74 Candolier Forever 376
 Donna 244 GDAR

Boyd On Target 1083 SAF 598 Bando 5175
Fink Donna 6444 9140 OT Boyd Forever Lady 7095
 15698539 Finks Donna 9140 B430 6148 Finks 5522-6148
 Brooks Donna 430

CE	BW	WW	YW	Milk	SC	CW	REA	FAT	MB
n/a	4.6	40	74	27	n/a	n/a	n/a	n/a	n/a

- New Trend daughters are hard to find.
- **Note this one is double-bred Donna!** One of the most popular families in the U.S.!
- The grandam has produced over \$40,000 in progeny sales.
- 5/29/10 to CAR Efficient 534.

121 Fink Donna 8360 6553 Mara

Calved: 8/28/08 Reg. # 16357900 Tattoo:8360

OCC Kirby 633K OCC Emblazon 854E
BC Marathon 7022 OCC Blackbird 785H
 14187839 Gibbet Hill Mignonne E37 Papa Equator 2928
 Gibbet Hill Mignonne TR 29

Hyline Right Time 338 Leachman Right Time
Fink Donna 6553 673 338 Hyline Pride 265
 15698641 FAF Donna 673 907 323 B/R New Design 323
 Brooks 907 of 1853 6148

CE	BW	WW	YW	Milk	SC	CW	REA	FAT	MB
n/a	n/a	n/a	n/a	n/a	n/a	n/a	.28	.012	.29

- Marathon is a featured sire at Genex.
- The Donna family stems back to Donna 1853—full sister to AAR New Trend.
- Dam is a powerful female with a great udder.
- Bred 5/27/10 to CAR Efficient 534.

122 Fink Formera 8364 6558 Mara

Calved: 8/26/08 Reg. # 16357911 Tattoo:8364

OCC Kirby 633K OCC Emblazon 854E
BC Marathon 7022 OCC Blackbird 785H
 14187839 Gibbet Hill Mignonne E37 Papa Equator 2928
 Gibbet Hill Mignonne TR 29

Hyline Right Time 338 Leachman Right Time
Fink Formera 6558 3308 338 Hyline Pride 265
 15703425 Finks Formera 3308 9143 036 B/R New Design 323
 Finks Formera 9143 5187 6148

CE	BW	WW	YW	Milk	SC	CW	REA	FAT	MB
n/a	4.8	56	94	24	.31	21	.32	.003	.22

- All 3 females on the bottom side were donors for Finks.
- The Formera family produced Fink 6148, a 5522 son that excelled in carcass.
- Breeding information announced sale day.

ANGUS DIVISION



Barretts Miss 1603 4168 RT, dam of lots 123 & 124

123 Vohs Miss 701 of 1603 OT

Calved: 9/07/07 Reg. # 15987000 Tattoo: 701

124 Vohs Miss 702 of 1603 OT

Calved: 9/01/07 Reg. # 15987001 Tattoo: 702

SAF 598 Bando 5175 Bon View Bando 598
Boyd On Target 1083 SAF Royal Lass 1002
 13828202 Boyd Forever Lady 7095 DHD Traveler 6807
 SVF Forever Lady 57D

Leachman Right Time N Bar Emulation EXT
Barretts Miss 1603 4168 RT Leachman Erica 0025
 14705435 Finks Miss 4168 8130 5204 RR Traveler 5204
 Finks 8130 of 678-549

CE	BW	WW	YW	Milk	SC	CW	REA	FAT	MB
4	2.9	46	89	21	69	10	-.20	.028	20

- Dam sold for \$9,000 in a past Fink sale.
- Beautiful udders—note 4168 female in pedigrees.
- These females were flushed last fall and this spring.
- 701 bred 5/28/10 to CAR Efficient 534.
- 702 bred 5/29/10 to CAR Efficient 534.

125 Fink Miss 7297 3010 OT

Calved: 8/02/07 Reg. # 16052759 Tattoo: 7297

SAF 598 Bando 5175 Bon View Bando 598
Boyd On Target 1083 SAF Royal Lass 1002
 13828202 Boyd Forever Lady 7095 DHD Traveler 6807
 SVF Forever Lady 57D

B/R New Design 036 VDAR New Trend 315
Finks Miss 3010 4168 036 B/R Blackcap Empress 76
 14676113 Finks Miss 4168 8130 5204 RR Traveler 5204
 Finks 8130 of 678-549

CE	BW	WW	YW	Milk	SC	CW	REA	FAT	MB
n/a	26	47	92	26	n/a	12	-.17	.021	47

- 4168 generated over \$600,000 in total sales in her lifetime.
- Nice made On Target that we flushed last fall.
- Bred 5/27/10 to CAR Efficient 534.

126 Fink Donna 628 2525 OT

Calved: 9/01/06 Reg. # 15698549 Tattoo: 628

SAF 598 Bando 5175 Bon View Bando 598
Boyd On Target 1083 SAF Royal Lass 1002
 13828202 Boyd Forever Lady 7095 DHD Traveler 6807
 SVF Forever Lady 57D

SAF 598 Bando 5175 Bon View Bando 598
Finks Donna 2525 907 5175 SAF Royal Lass 1002
 14424114 Brooks 907 of 1853 6148 Finks 5522-6148
 AAR Donna 1853

CE	BW	WW	YW	Milk	SC	CW	REA	FAT	MB
5	3.3	51	99	26	n/a	5	-.07	.012	.33

- Female we flushed — ratioed 107 on 1st calf.
- Really nice made—great udder.
- Note the Donna family again — proven genetics.
- Bred 5/27/10 to CAR Efficient 534.



Kansas Junior Charolais Members, May 2010

Please join us Friday evening, August 6, for supper catered by Little Apple Brewing Company of Manhattan. Entertainment and refreshments also! Thank you for attending our sale. Stop by anytime!



Sale Highlights

Finks Miss 5651 1806 GG, Lot 1 Finks Miss 6907 1806 GG, Lot 2

Gridmaker flush sisters, Megan Family, Lots 18 & 19

3 Direct Gridmaker x 10224 daughters, Lots 15, 16 & 17

Fink Vanessa 5807 3551 9108, Lot 40 LC Suspects Full Sister, Lot 85

Direct daughters/granddaughters of 248, Lots 34—39

Baldrige Kojack 29K daughters! 8 direct daughters of Kisses!

2 Gridmaker flush females out of the 8140 family.

Majority of offering under 3 years of age.

View the entire offering online after July 25th.

Go to: www.finkbeefgenetics.com -or- www.LiveCattleSales.com

Eye appeal, balanced EPDs,

super carcass, excellent feet,

and great udder quality ...

Fink Females.



Beef Genetics

